



PORTS AND YACHTING DIRECTORATE

Transport Malta

LOCAL NOTICE TO MARINERS No 119 of 2020

Our Ref: **TM/PYD/63/95**

Malta Transport Centre
Marsa, MRS 1917
Malta

Tel: (356) 2122 2203
Fax: (356) 2125 0365
Email: info.tm@transport.gov.mt

05 October 2020

www.transport.gov.mt

Geophysical surveys at three different localities in Malta

The Ports and Yachting Directorate, Transport Malta, notifies mariners and owners of vessels that Geophysical surveys will be held in St. Paul's Bay, in Marsamxett Harbour and in the Grand Harbour.

Weather permitting the surveys will commence on Monday 19th October 2020 and are expected to be completed by Saturday 31st October 2020.

The surveys will be held within the buffer zone of 100m from the following areas:

St. Paul's Bay – near Bugibba breakwater

Within the area formed by joining the points 1A, 1B, 1C, 1D 1E and the intermediate coastline and the area joining the points 1F, 1G and the intermediate coastline (as shown on attached chart 1).

	LATITUDE (N)	LONGITUDE (E)
1A	35° 57'.127	014° 24'.517
1B	35° 57'.139	014° 24'.447
1C	35° 57'.066	014° 24'.340
1D	35° 57'.039	014° 24'.369
1E	35° 57'.084	014° 24'.429
1F	35° 57'.112	014° 24'.470
1G	35° 57'.105	014° 24'.513



Transport Malta

Marsamxett Harbour – near Mamma Mia

Within the area formed by joining the points 2A, 2B, 2C, 2D and the intermediate coastline (as shown on attached chart 2).

	LATITUDE (N)	LONGITUDE (E)
2A	35° 53'.818	014° 29'.589
2B	35° 53'.796	014° 29'.603
2C	35° 53'.820	014° 29'.660
2D	35° 53'.835	014° 29'.651

The Grand Harbour – between Fuel Wharf and Ras Hanzir

Within the area formed by joining the points 3A, 3B, 3C, 3D, 3E, 3F and the intermediate coastline (as shown on attached chart 3).

	LATITUDE (N)	LONGITUDE (E)
3A	35° 53'.124	014° 30'.385
3B	35° 53'.127	014° 30'.424
3C	35° 53'.143	014° 30'.413
3D	35° 53'.121	014° 30'.362
3E	35° 53'.008	014° 30'.221
3F	35° 52'.994	014° 30'.238

The Grand Harbour – between Deep Water Quay and Wine Wharf

Within the area formed by joining the points 4A, 4B, 4C, 4D and the intermediate coastline (as shown on attached chart 4).

	LATITUDE (N)	LONGITUDE (E)
4A	35° 53'.265	014° 30'.349
4B	35° 53'.258	014° 30'.356
4C	35° 53'.260	014° 30'.369
4D	35° 53'.265	014° 30'.368



Transport Malta

Marsamxett Harbour – next to road in front of Msida church

Within the area formed by joining the points 5A, 5B, 5C, 5D, 5E and the intermediate coastline (as shown on attached chart 2).

	LATITUDE (N)	LONGITUDE (E)
5A	35° 53'.768	014° 29'.430
5B	35° 53'.790	014° 29'.523
5C	35° 53'.773	014° 29'.530
5D	35° 53'.758	014° 29'.463
5E	35° 53'.704	014° 29'.482

Owners of vessels that are moored within the above areas, are to remove such vessels and mooring tackle with immediate effect and not later than Sunday 18th October 2020.

Any vessels and moorings that are left in these areas will be removed at the expense of the owner. No liability whatsoever will be accepted by the Authority for any damage that may be caused while removing the said vessels and moorings.

Work boat Northstar will be carrying the work and will be towing equipment therefore will be moving slowly and will have restricted manoeuvrability.

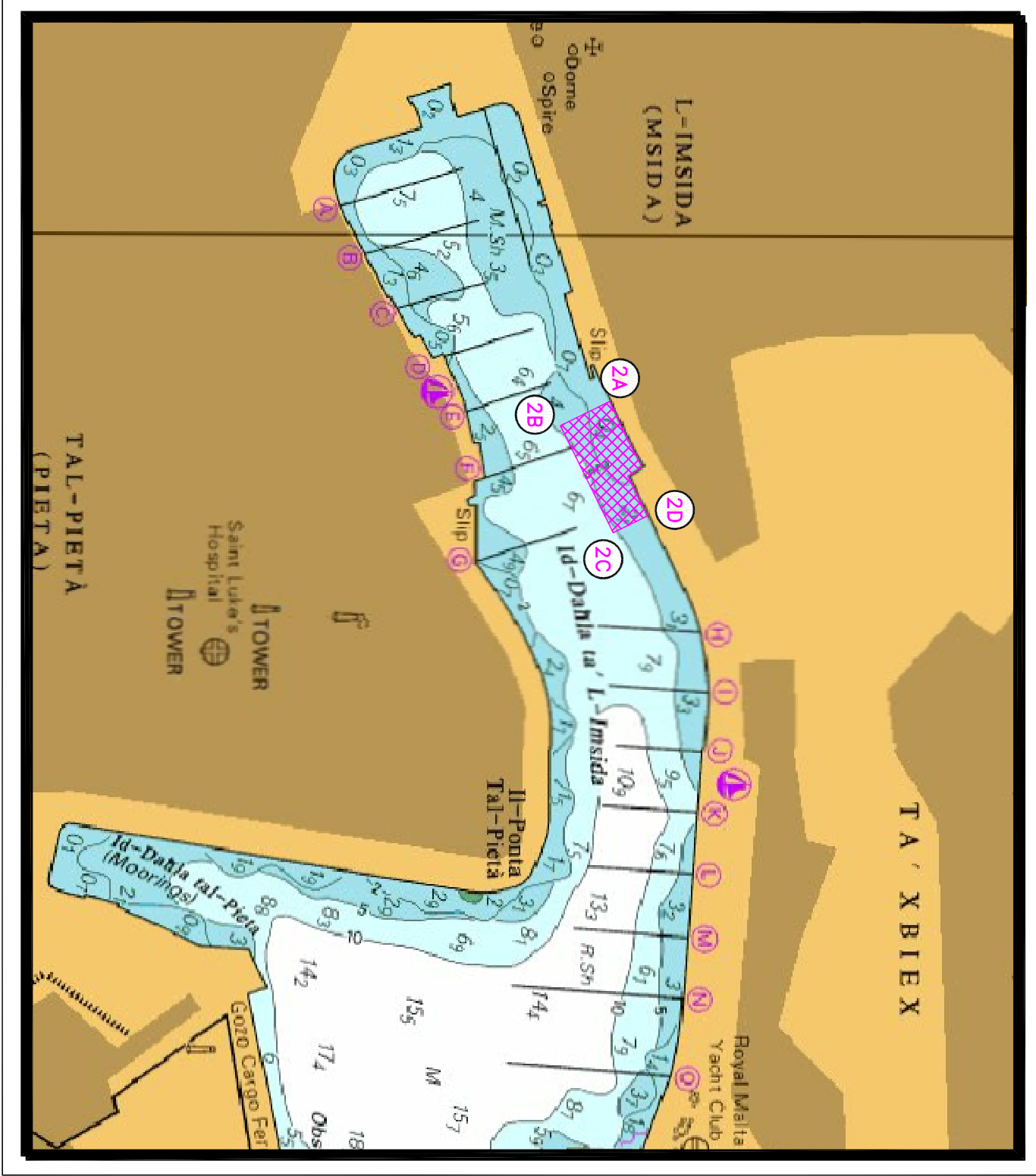
Navigation within the 100m buffer zone is to be at a very slow speed (No Wake)

Mariners and operators of vessels are advised to keep a sharp lookout and give the above-mentioned vessel a wide berth as it will have restricted manoeuvrability.

Instructions given by Valletta Port Control (Valletta VTS) on VHF Channel 12 are to be complied with.

Chart affected: **BA 211, 2537, 2538**

Positions referred to **WGS 84 DATUM.**



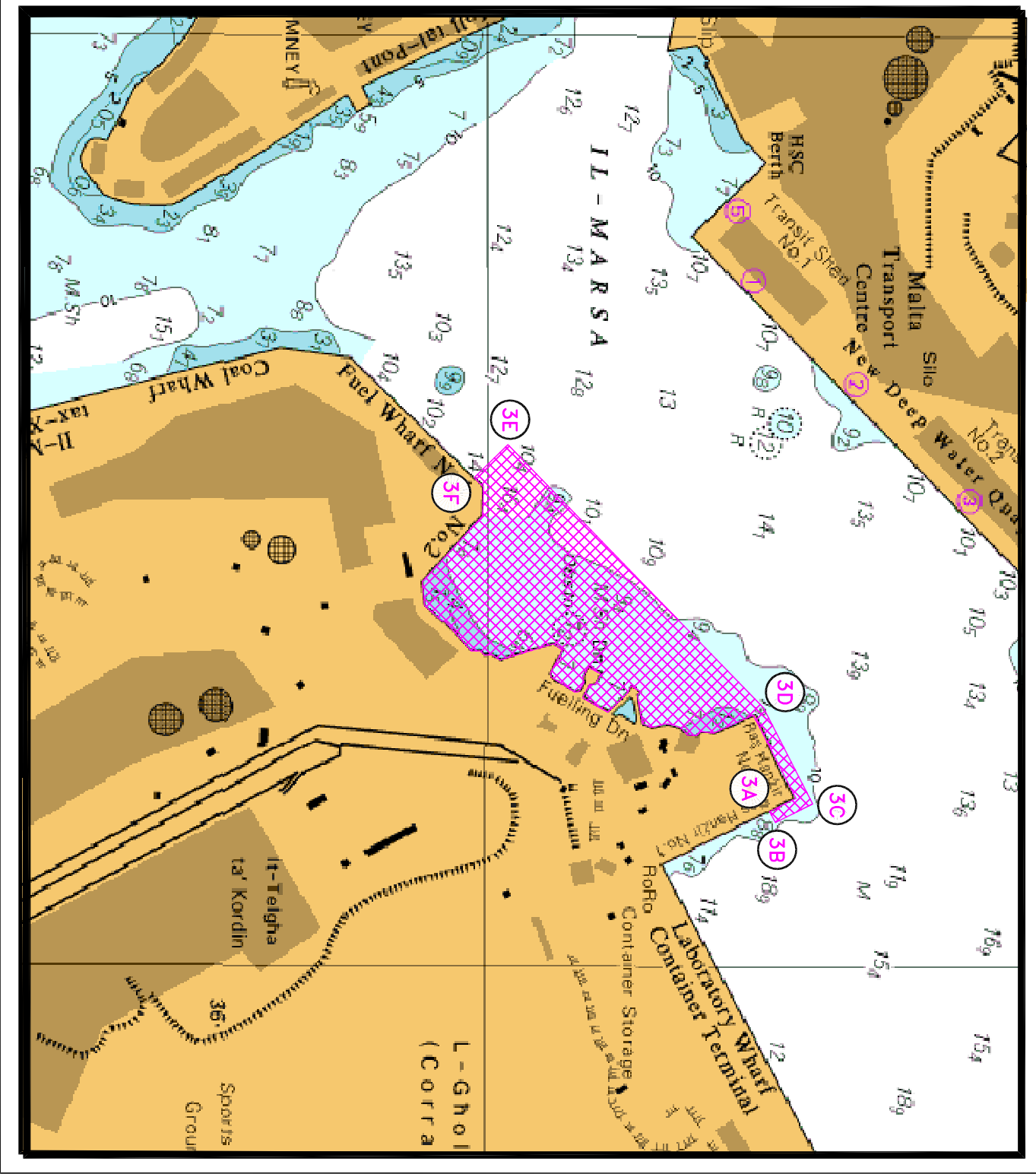
© British Crown Copyright 1970, 1983, 1986, 1988, 1999, 2000
 All rights reserved.

The UK Hydrographic Office makes the accompanying data
 Available to Malta Maritime Authority (Transport Malta)
 Under the terms and conditions of agreement HO 1427/020930/01.

DISCLAIMER

Whilst the UK Hydrographic Office has endeavoured to ensure
 That the material supplied is suitable for the purpose described,
 It accepts no liability (to the maximum extent permitted by law)
 For any damage or loss of any nature arising from its use.
 The material supplied is used entirely at the Recipient's own risk.

Chart 2



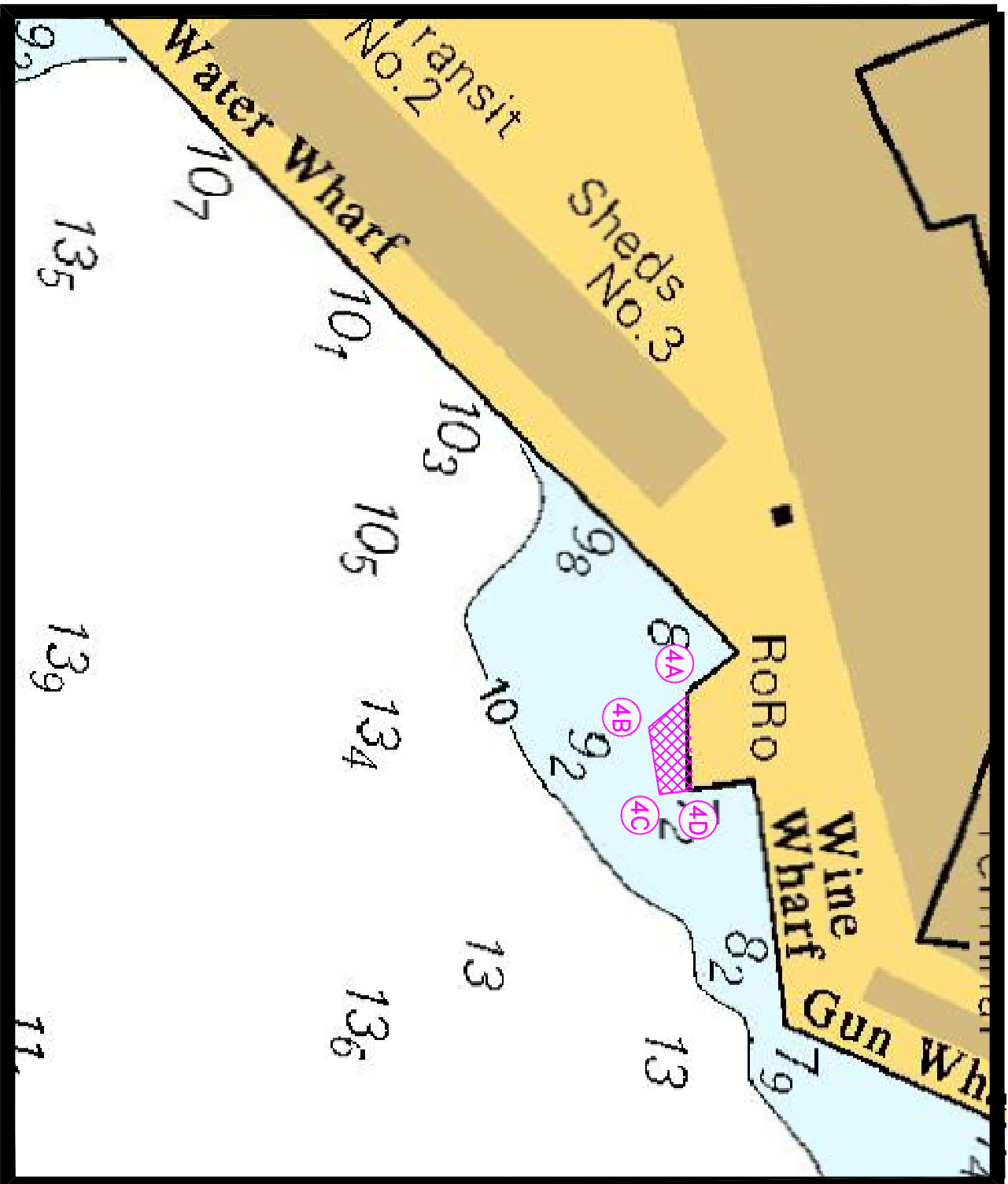
© British Crown Copyright 1970, 1983, 1986, 1988, 1999, 2000
 All rights reserved.

The UK Hydrographic Office makes the accompanying data
 Available to Malta Maritime Authority (Transport Malta)
 Under the terms and conditions of agreement HO 1427/020930/01.

DISCLAIMER

Whilst the UK Hydrographic Office has endeavoured to ensure
 That the material supplied is suitable for the purpose described,
 It accepts no liability (to the maximum extent permitted by law)
 For any damage or loss of any nature arising from its use.
 The material supplied is used entirely at the Recipient's own risk.

Chart 3



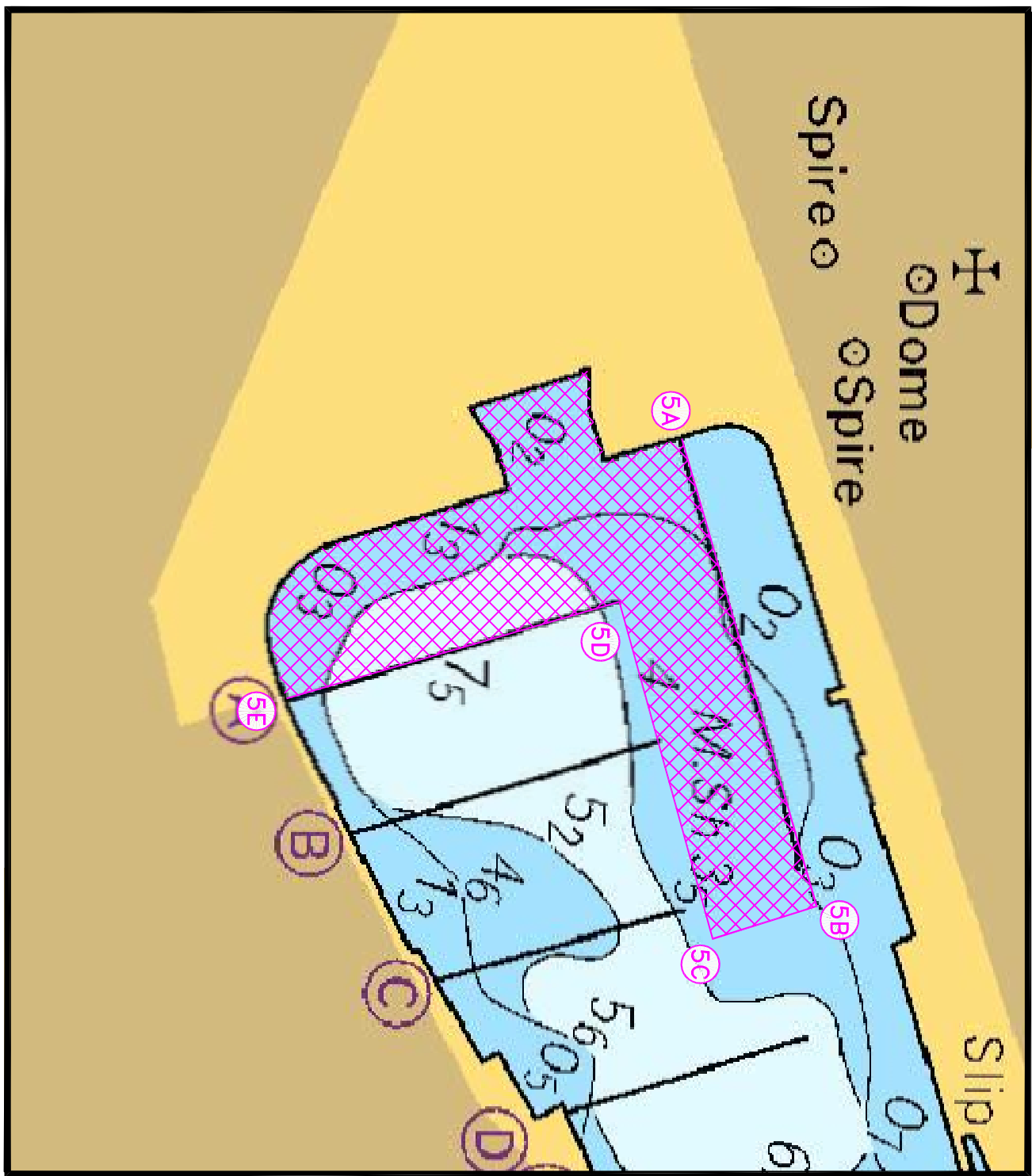
© British Crown Copyright 1970, 1983, 1986, 1988, 1999, 2000
All rights reserved.

The UK Hydrographic Office makes the accompanying data
Available to Malta Maritime Authority (Transport Malta)
Under the terms and conditions of agreement HO 1427/020930/01.

DISCLAIMER

Whilst the UK Hydrographic Office has endeavoured to ensure
That the material supplied is suitable for the purpose described,
It accepts no liability (to the maximum extent permitted by law)
For any damage or loss of any nature arising from its use.
The material supplied is used entirely at the Recipient's own risk.

Chart 4



© British Crown Copyright 1970, 1983, 1986, 1988, 1999, 2000
 All rights reserved.

The UK Hydrographic Office makes the accompanying data
 Available to Malta Maritime Authority (Transport Malta)
 Under the terms and conditions of agreement HO 1427/020930/01.

DISCLAIMER

Whilst the UK Hydrographic Office has endeavoured to ensure
 That the material supplied is suitable for the purpose described,
 It accepts no liability (to the maximum extent permitted by law)
 For any damage or loss of any nature arising from its use.
 The material supplied is used entirely at the Recipient's own risk.

Chart 5