



Ports and Yachting Directorate

Transport Malta

## NOTICE TO MARINERS No 45 OF 2020

Our Ref: MT/PYD/88/06

Malta Transport Centre  
Marsa, MRS 1917  
Malta

Tel: (356) 2122 2203  
Fax: (356) 2125 0365  
Email: [info.tm@transport.gov.mt](mailto:info.tm@transport.gov.mt)

18 September 2020

[www.transport.gov.mt](http://www.transport.gov.mt)

### Restricted Area between “Ponta ta’ l-Ahrax” and “Dahlet ix-Xilep”

The Ports and Yachting Directorate, Malta Transport notifies that as part of an EU LIFE project, aimed at protecting the Yelkouan Shearwaters (**GARNIJA**), seabirds that breed on cliffs, a restricted area is established. One such breeding area is located at “Rdum tal-Madonna” on the cliffs between il-Ponta ta’ l-Ahrax and Dahlet ix-Xilep. The “Rdum tal-Madonna” breeding colony has been designated as a “Special Protection Area” because Malta has 10% of the world’s population of Yelkouan Shearwaters and is internationally important for these birds. Light and noise can easily disturb the birds and cause them to desert the colony.

The buffer zone to the “Special Protection Area (SPA)” (about 1.1 Nautical Mile from shore) lies between the following imaginary points and the intermediate coastline, as shown on attached chart 1:

	LATITUDE (N)	LONGITUDE (E)
(A)	35°59'.268	14°22'.574
(B)	35°59'.231	14°23'.759
(C)	36°00'.624	14°23'.088
(D)	36°00'.874	14°22'.692
(E)	35°59'.901	14°22'.057

In view of the above, Masters of all vessels and craft are to adhere to the following conduct while transiting the area all year round.

Lights, other than lights prescribed in the Convention on the International Regulations for Preventing Collisions at Sea, 1972 (COLREGs), have to be switched off and no loud noise, other than sound signals prescribed in the Convention on the International Regulations for Preventing Collisions at Sea, 1972 (COLREGs), from vessels is allowed whilst moving along this stretch of coast.



Transport Malta

Pleasure cruises operating as “Boat Parties” are obliged to follow the above guideline and switch off all lights and music while passing in the indicated area or otherwise keep clear from the buffer zone to the SPA.

The letting off of petards and other fireworks from sea is not allowed in the buffer zone to the SPA all year round.

The buffer zone to the SPA is a “no stopping zone” for all vessels other than vessels carrying out fishing activities.

Fishing activities in the area using strong lights (lampara etc) are prohibited in line with Art.4 of the Fishery Regulations (SL425.01) and Council Regulation (EC) No 1967/2006 concerning management.

Further to the above, the Ports and Yachting Directorate, Malta Transport notifies mariners that as part of the LIFE Arcipelagu Garnija project, the Environment and Resources Authority (ERA) has established a number of restrictions, in line with

- the Birds Directive (Directive 2009/147/EC) transposed into Maltese legislation through the Conservation of Wild Birds Regulations (S.L. 549.42)
- the Habitats Directive (Directive 92/43/EEC) transposed into Maltese legislation through the Flora, Fauna and Fauna and Natural Habitats Protection Regulations (S.L 549.44).
- the Marine Strategy Framework Directive (Directive 2008/56/EC) transposed into Maltese legislation through the Marine Policy Framework Regulations (S.L. 549.62).

As such, within the area enclosed by the imaginary line X – Y and the intermediate coastline, shown hatched red on attached chart 2, while all conditions mentioned above apply, no anchoring except for fishing and diving vessels is permitted. Maximum speed 3 knots.

	LATITUDE (N)	LONGITUDE (E)
(X)	35 °59'.584	14 °22'.339
(Y)	35 °59'.539	14 °23'.361

Notice to Mariners No. 02 of 2010 of Transport Malta is hereby **CANCELLED**.

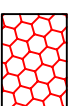
Charts Affected: **BA 211A, 2538, 2537, 194**

© British Crown Copyright 1970, 1983, 1986, 1988, 1999, 2000  
All rights reserved.

The UK Hydrographic Office makes the accompanying data  
Available to Malta Maritime Authority (Transport Malta)  
Under the terms and conditions of agreement HO 1427/020930/01.

#### DISCLAIMER

Whilst the UK Hydrographic Office has endeavoured to ensure  
That the material supplied is suitable for the purpose described,  
It accepts no liability (to the maximum extent permitted by law)  
For any damage or loss of any nature arising from its use.  
The material supplied is used entirely at the Recipient's own risk.



Only compulsory lights  
and sound – applicable  
to all vessels including  
pleasure cruises  
operating as boat  
parties. No petards or  
other fireworks. No  
stopping except for  
fishing vessels, but  
cannot use strong  
lights (like lampara).  
All year round and at  
all times.

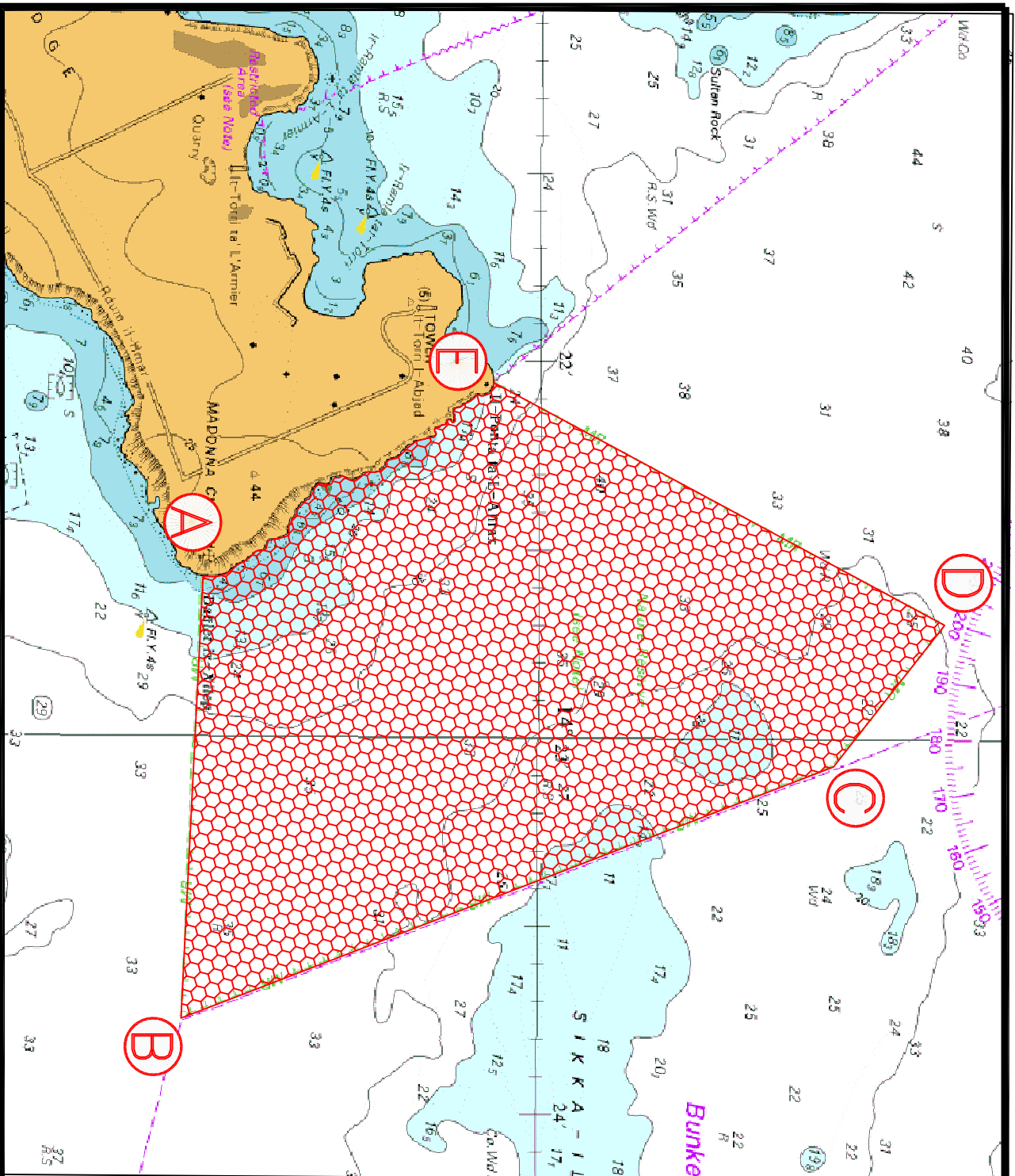


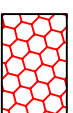
Chart 1

© Transport Malta all rights reserved

**DISCLAIMER**

Whilst the Ports and Yachting Directorate, Transport Malta has endeavoured to ensure that the material supplied is suitable for the purpose described, it accepts no liability (to the maximum extent permitted by law) for any damage or loss of any nature arising from its use.

The material supplied is used entirely at the Recipient's own risk.



Only compulsory lights and sound including pleasure curises operating as boat parties. No petards or other fireworks. No stopping except for fishing and diving vessels, but cannot use strong lights (lampara etc). Maximum speed 3 knots. All year round and at all times.

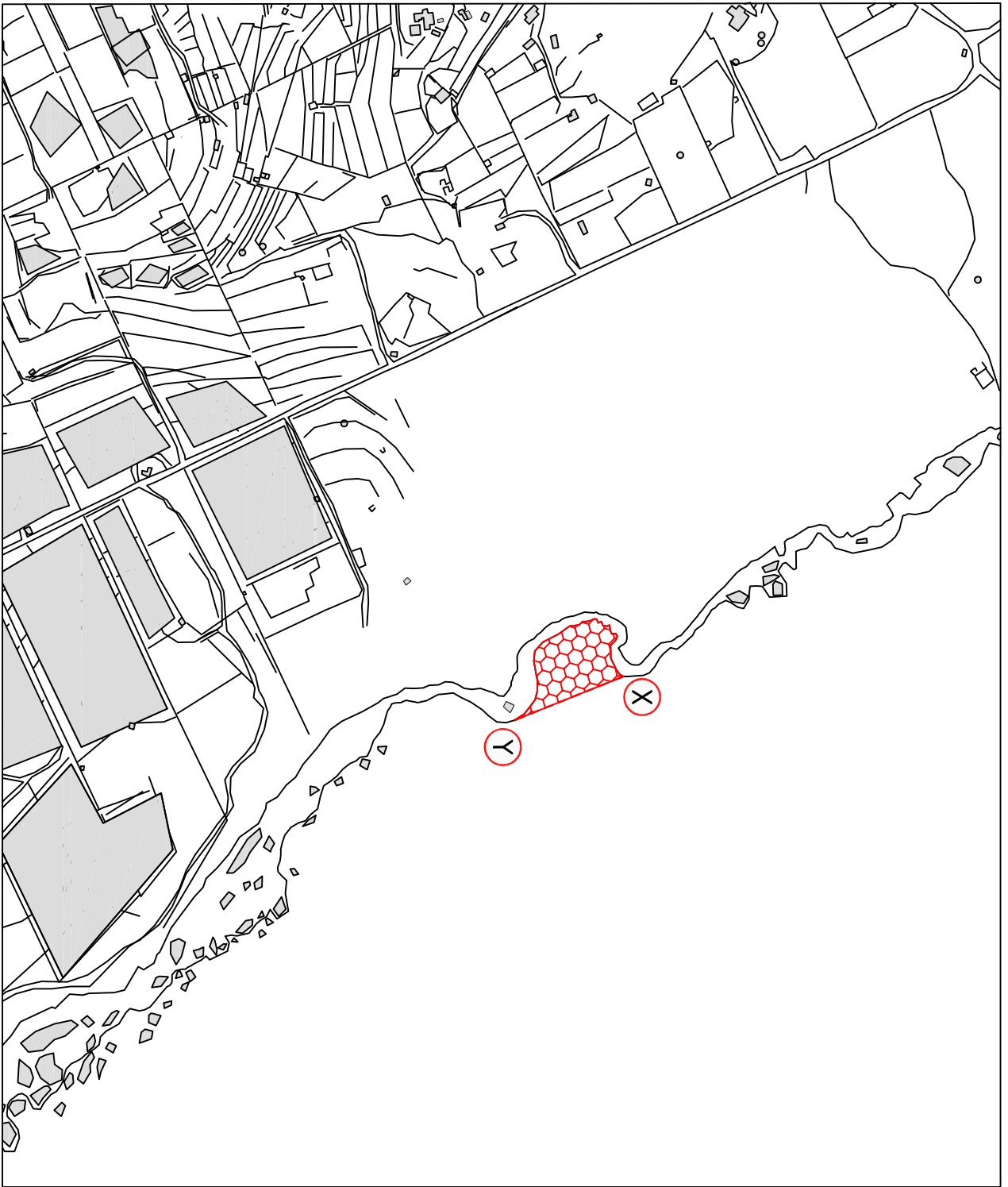


Chart 2