



PORTS AND YACHTING DIRECTORATE

Transport Malta

## LOCAL NOTICE TO MARINERS No 100 of 2020

Our Ref: **TM/PYD/63/95**

Malta Transport Centre  
Marsa, MRS 1917  
Malta

Tel: (356) 2122 2203  
Fax: (356) 2125 0365  
Email: [info.tm@transport.gov.mt](mailto:info.tm@transport.gov.mt)

[www.transport.gov.mt](http://www.transport.gov.mt)

31 August 2020

### Surveys in various areas in Malta and Gozo connection with Medkey Habitat campaign

The Ports and Yachting Directorate, Transport Malta, notifies mariners that in connection with the Medkey Habitat campaign, surveys will be carried out in various parts in Malta and Gozo.

The vessels "SIMO" and "PAOLA ONE" will be used simultaneously to operate the various types of surveys which include the use of single / multibeam echo sounder, side scan sonar, grab (for sampling), a towed camera / ROV and scuba divers. The surveys will start on Sunday 6<sup>th</sup> September 2020 and is expected to be completed by Saturday 19<sup>th</sup> September 2020.

The surveys will be carried out within the areas formed by joining the points and the intermediate coastline, shown hatched on attached charts.

On chart 1 (Gozo)

Area	Point	Latitude (N)	Longitude (E)
Ramla Bay	A	36° 04'.390	014° 16'.054
	B	36° 03'.937	014° 17'.456
San Blas Bay	B	36° 03'.937	014° 17'.456
	C	36° 03'.544	014° 18'.614
Dahlet Qorrot Bay	D	36° 03'.433	014° 18'.718
	E	36° 03'.005	014° 19'.159
	F	36° 00'.968	014° 16'.635
Ponta tal-Hotba to Tal- Fessej	G	36° 00'.681	014° 16'.635
	H	36° 00'.681	014° 15'.692
	I	36° 01'.225	014° 13'.323
Dwejra	J	36° 02'.193	014° 11'.171
	K	36° 02'.193	014° 11'.041
	L	36° 03'.909	014° 11'.023
	M	36° 03'.909	014° 11'.086



Transport Malta

On chart 2 (Malta)

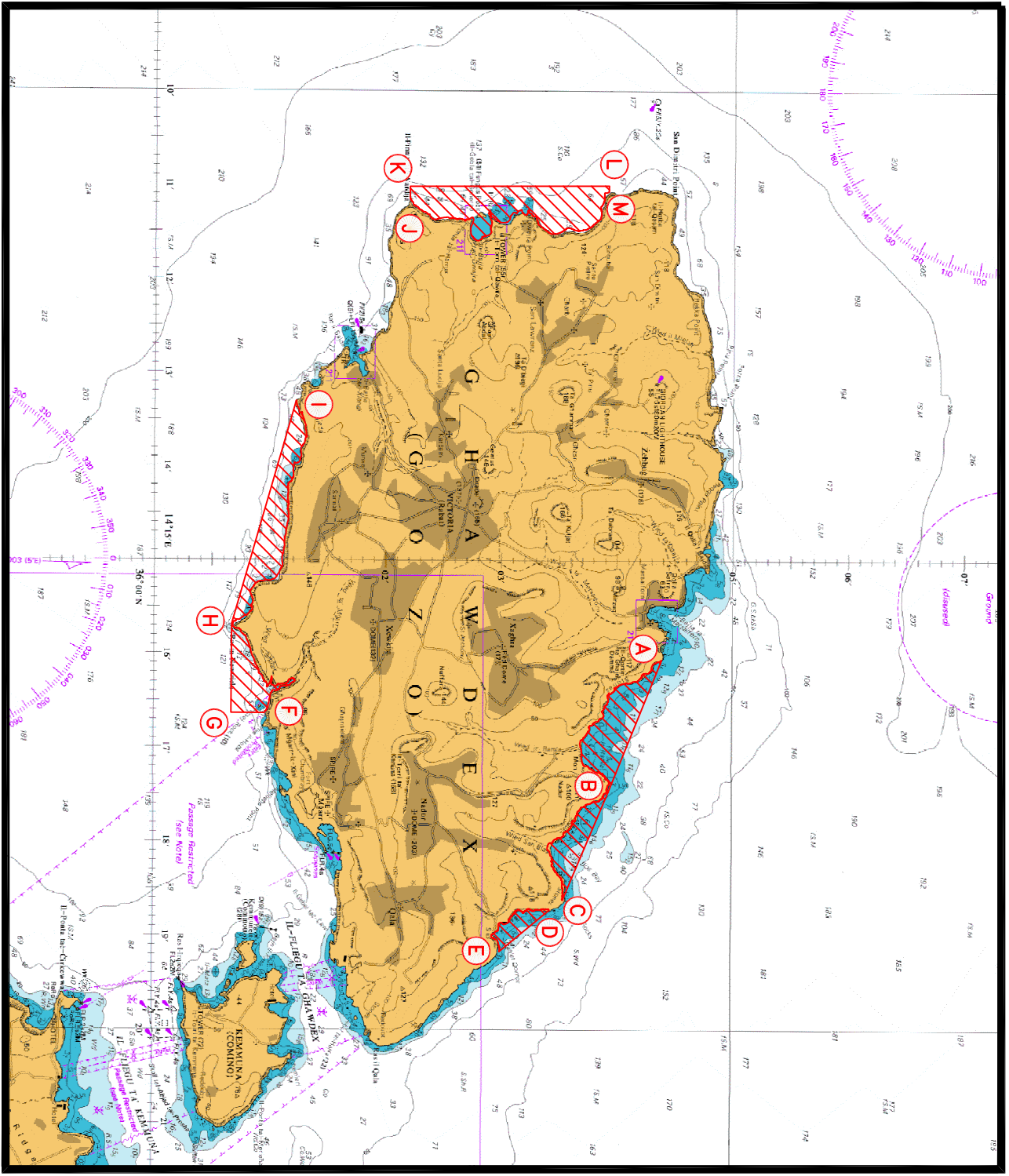
Area	Point	Latitude (N)	Longitude (E)
Mellieha Bay	A	35° 59'.294	014° 22'.584
	B	35° 58'.288	014° 22'.767
St. Paul's Bay	C	35° 57'.822	014° 23'.878
	D	35° 57'.429	014° 25'.042
Salina Bay	E	35° 57'.593	014° 25'.813
	F	35° 57'.291	014° 25'.985
Rdum Majjiesa to Ghar Lapsi	G	35° 49'.101	014° 27'.974
	H	35° 48'.452	014° 26'.375
	I	35° 49'.428	014° 24'.874
	J	35° 52'.635	014° 19'.964
	K	35° 54'.074	014° 19'.009
	L	35° 56'.683	014° 19'.010
Filfla Island	M	35° 56'.684	014° 19'.944
	N	35° 47'.766	014° 25'.030
	O	35° 46'.736	014° 25'.037
	P	35° 46'.729	014° 23'.687
	Q	35° 47'.759	014° 23'.679

Mariners and operators of sea craft are advised to keep a sharp lookout and proceed at slow speed (no wake) while navigating in the above areas. They are to give the vessels "SIMO" and "PAOLA ONE" a wide berth of 500m, since they will be towing equipment behind and therefore restricted in their ability to manoeuvre.

Moreover, they are requested to comply with instructions given by Valletta Port Control (Valletta VTS) on VHF Channel 12.

Chart affected: **BA 211, 2537, 2538**

Positions referred to **WGS 84 DATUM.**



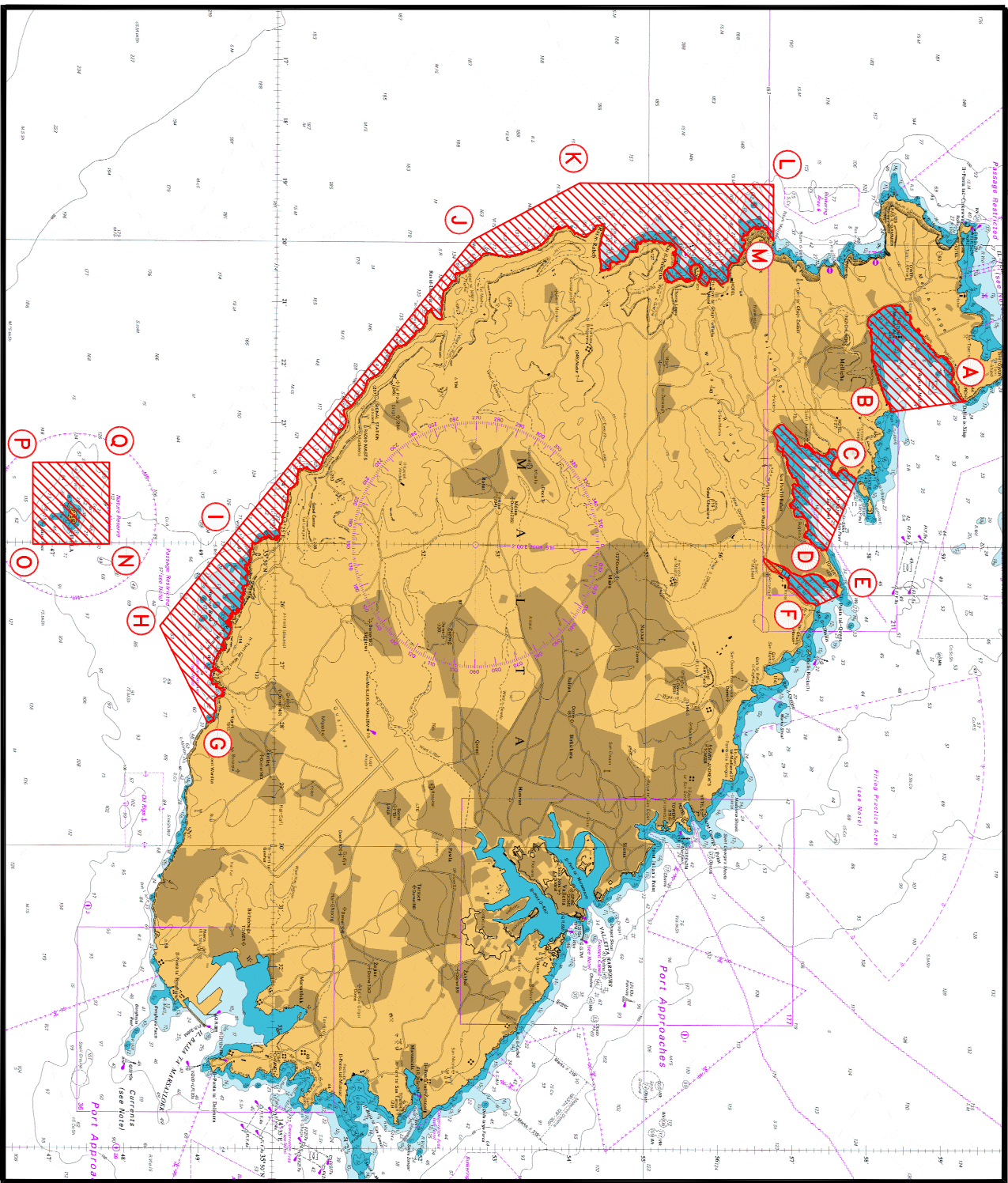
© British Crown Copyright 1970, 1983, 1986, 1988, 1999, 2000  
 All rights reserved.

The UK Hydrographic Office makes the accompanying data  
 Available to Malta Maritime Authority (Transport Malta)  
 Under the terms and conditions of agreement HO 1427/020930/01.

**DISCLAIMER**

Whilst the UK Hydrographic Office has endeavoured to ensure  
 That the material supplied is suitable for the purpose described,  
 It accepts no liability (to the maximum extent permitted by law)  
 For any damage or loss of any nature arising from its use.  
 The material supplied is used entirely at the Recipient's own risk.

Chart 1



© British Crown Copyright 1970, 1983, 1986, 1988, 1999, 2000  
All rights reserved.

The UK Hydrographic Office makes the accompanying data  
Available to Malta Maritime Authority (Transport Malta)  
Under the terms and conditions of agreement HO 1427/020930/01.

**DISCLAIMER**

Whilst the UK Hydrographic Office has endeavoured to ensure  
That the material supplied is suitable for the purpose described,  
It accepts no liability (to the maximum extent permitted by law)  
For any damage or loss of any nature arising from its use.  
The material supplied is used entirely at the Recipient's own risk.

Chart 2