



PORTS AND YACHTING DIRECTORATE

LOCAL NOTICE TO MARINERS No 093 of 2020

Our Ref: **TM/PYD/132/89**

14 August 2020



Transport Malta

Malta Transport Centre
Marsa, MRS 1917
Malta

Tel: (356) 2122 2203
Fax: (356) 2125 0365
Email: info.tm@transport.gov.mt

www.transport.gov.mt

Filming in the Grand Harbour and from Pembroke – Arcadia

The Ports and Yachting Directorate, Transport Malta notifies mariners and operators of vessels that filming will be carried out in the Grand Harbour and from Pembroke.

The filming will be carried out at:

From Pembroke on Friday 4th September 2020, Saturday 5th September 2020, Monday 7th September 2020 and on Thursday 10th September 2020 between 0600 hours and 2000 hours on each day.

From Id-Dahla tal-Kalkara on Friday 11th September 2020 between 0600 hours to 2000 hours.

From Barriera Wharf on Saturday 12th September 2020 between 0600 hours to 2020 hours.

Due to the above filming the area at Pembroke within the points A, B, C, D and the intermediate coastline (as shown hatched on attached chart 1), the area at Id-Dahla tal-Kalkara within the points S, T, U, V and the intermediate coastline and the area at Barriera Wharf within the points W, X, Y, Z and the intermediate coastline (both as shown hatched on attached chart 2) are to be kept clear from any vessels during the above mentioned dates and times of the filming.

Mariners are to take note of the above and comply with any instructions issued by Valletta Port Control (Valletta VTS) on VHF channel 12 and any enforcement agency on site.

Charts affected: **BA 177, 2538**

© British Crown Copyright 1970, 1983, 1986, 1988, 1999, 2000
All rights reserved.

The UK Hydrographic Office makes the accompanying data
Available to Malta Maritime Authority (Transport Malta)
Under the terms and conditions of agreement HO 1427/020930/01.

DISCLAIMER

Whilst the UK Hydrographic Office has endeavoured to ensure
That the material supplied is suitable for the purpose described,
It accepts no liability (to the maximum extent permitted by law)
For any damage or loss of any nature arising from its use.
The material supplied is used entirely at the Recipient's own risk.

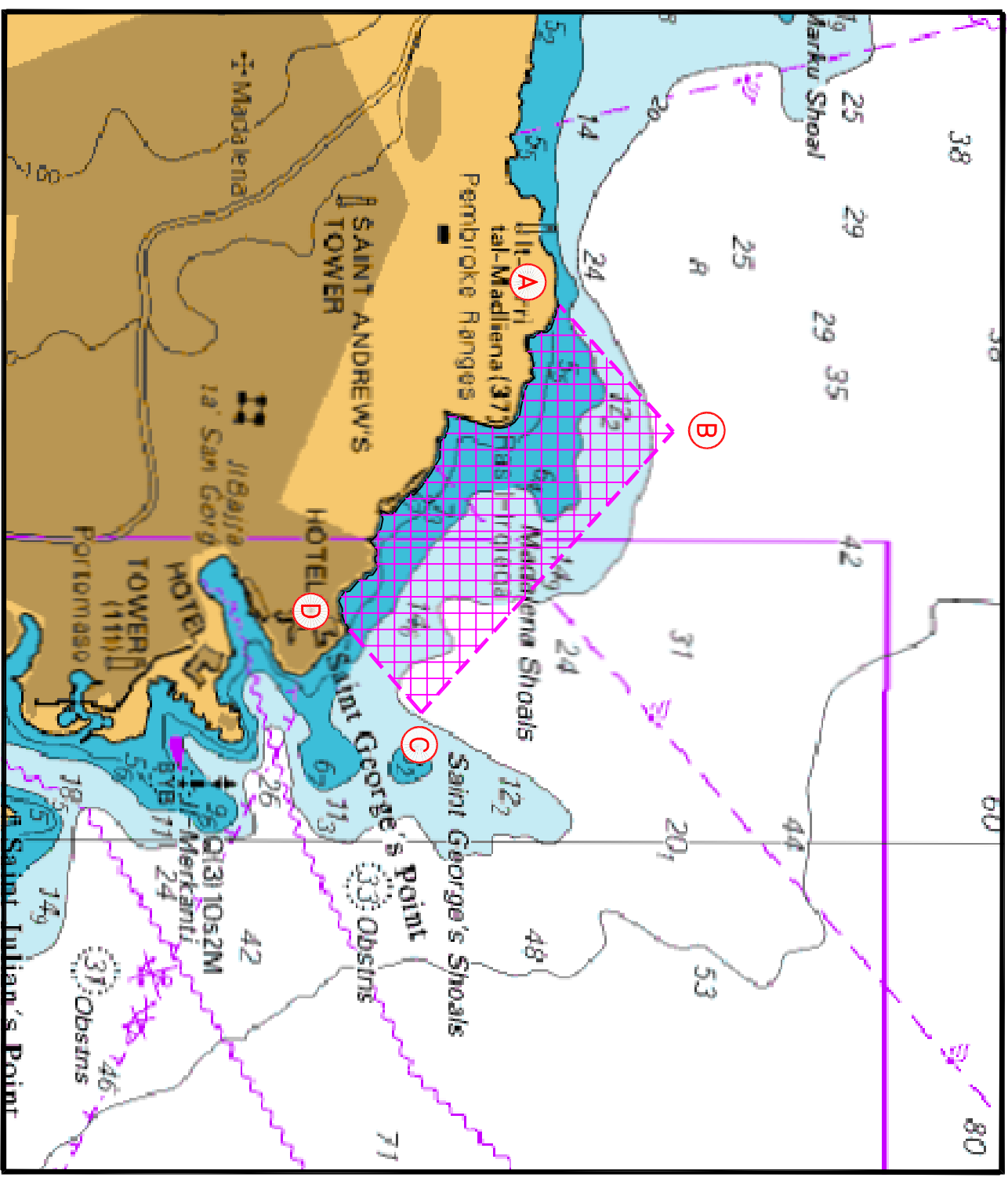
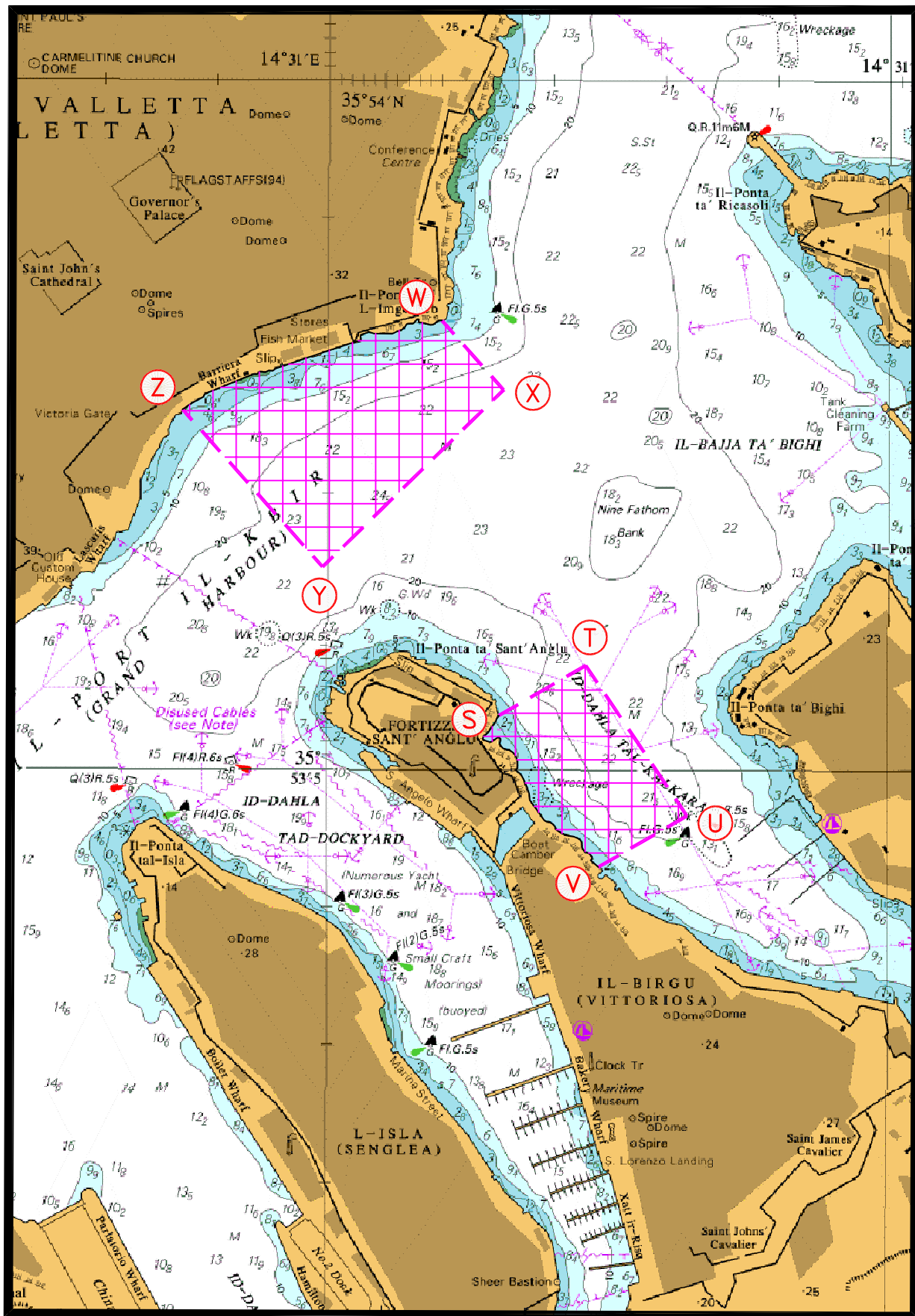


Chart 1



© British Crown Copyright 1970, 1983, 1986, 1988, 1999, 2000
 All rights reserved.

The UK Hydrographic Office makes the accompanying data
 Available to Malta Maritime Authority (Transport Malta)
 Under the terms and conditions of agreement HO 1427/020930/01.

DISCLAIMER

Whilst the UK Hydrographic Office has endeavoured to ensure
 That the material supplied is suitable for the purpose described,
 It accepts no liability (to the maximum extent permitted by law)
 For any damage or loss of any nature arising from its use.
 The material supplied is used entirely at the Recipient's own risk.

Chart 2