



PORTS AND YACHTING DIRECTORATE

Transport Malta

LOCAL NOTICE TO MARINERS No 083 of 2020

Our Ref: **TM/PYD/133/96**

Malta Transport Centre
Marsa, MRS 1917
Malta

Tel: (356) 2122 2203
Fax: (356) 2125 0365
Email: info.tm@transport.gov.mt

28 July 2020

www.transport.gov.mt

Maintenance dredging at Malta Freeport Terminals

The Ports and Yachting Directorate, Transport Malta notifies mariners that maintenance dredging will be carried out at Malta Freeport Terminals.

The dredging will be carried out within the area enclosed by the imaginary lines between the points A, B, C, D and the intermediate coastline as shown hatched in magenta on attached chart.

The dredger Sea Dragon will be towed by M/V Sea Wolf on Friday 31st July 2020 from the Grand Harbour to Marsaxlokk Harbour.

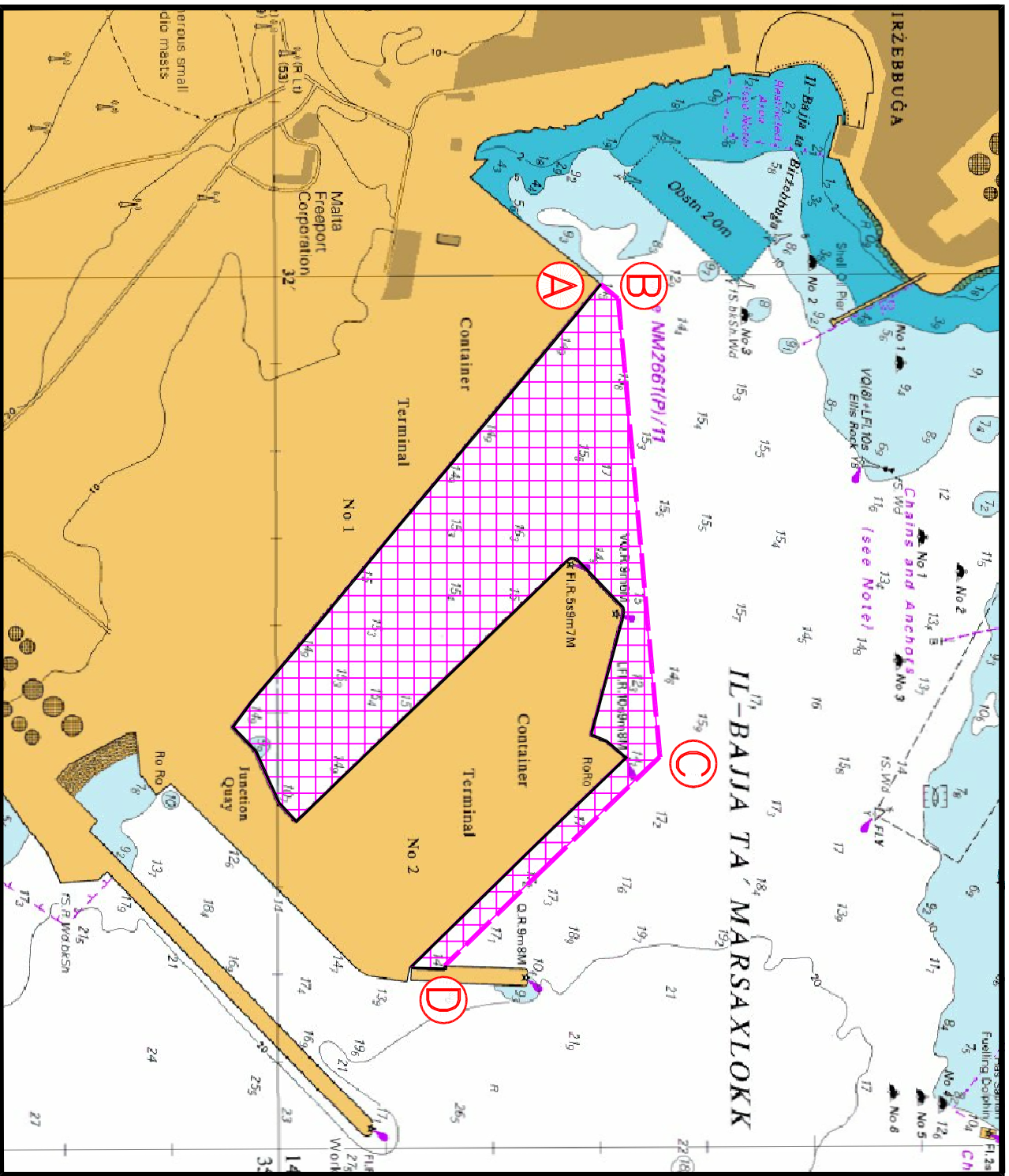
The works will commence from Monday 3rd August 2020 until further notice.

Dredger Sea Dragon will be loading the material onto the hopper barge Sea Hopper, which when loaded will sail to the dumping area to dump the material and return to Marsaxlokk Harbour. The work boat Betty will be assisting during the dredging.

Mariners are to keep a sharp lookout and navigate at slow speed when in the vicinity and give the above-mentioned vessels a wide berth when sighted.

They are to obey any instructions that are issued by Marsaxlokk Port Control (Marsaxlokk VTS) on VHF channel 14 and the organisers.

Charts Affected: **BA 36**



© British Crown Copyright 1970, 1983, 1986, 1988, 1999, 2000
 All rights reserved.

The UK Hydrographic Office makes the accompanying data
 Available to Malta Maritime Authority (Transport Malta)
 Under the terms and conditions of agreement HO 1427/020930/01.

DISCLAIMER

Whilst the UK Hydrographic Office has endeavoured to ensure
 That the material supplied is suitable for the purpose described,
 It accepts no liability (to the maximum extent permitted by law)
 For any damage or loss of any nature arising from its use.
 The material supplied is used entirely at the Recipient's own risk.