



PORTS AND YACHTING DIRECTORATE

Transport Malta

LOCAL NOTICE TO MARINERS No 063 of 2020

Our Ref: **TM/PYD/63/95**

Malta Transport Centre
Marsa, MRS 1917
Malta

Tel: (356) 2122 2203
Fax: (356) 2125 0365
Email: info.tm@transport.gov.mt

06 July 2020

www.transport.gov.mt

Surveys in various areas in Malta and Gozo connection with Medkey Habitat campaign

The Ports and Yachting Directorate, Transport Malta, notifies mariners that in connection with the Medkey Habitat campaign, surveys will be carried out in various parts in Malta and Gozo.

The vessel "SIMO" will be used to operate the various types of surveys which include the use of single / multibeam echo sounder, side scan sonar, grab (for sampling), a towed camera / ROV and scuba divers. The surveys will start on Tuesday 7th July 2020 and is expected to be completed by Saturday 11th July 2020.

The surveys will be carried out within the areas formed by joining the points and the intermediate coastline, shown hatched on attached charts.

On chart 1 (Gozo)

Area	Point	Latitude (N)	Longitude (E)
Ramla Bay	A	36° 04'.390	014° 16'.054
	B	36° 03'.937	014° 17'.456
San Blas Bay	B	36° 03'.937	014° 17'.456
	C	36° 03'.544	014° 18'.614
Dahlet Qorrot Bay	D	36° 03'.433	014° 18'.718
	E	36° 03'.005	014° 19'.159
Ponta tal-Hotba to Tal- Fessej	F	36° 00'.968	014° 16'.635
	G	36° 00'.681	014° 16'.635
	H	36° 00'.681	014° 15'.692
Dwejra	I	36° 01'.225	014° 13'.323
	J	36° 02'.193	014° 11'.171
	K	36° 02'.193	014° 11'.041
	L	36° 03'.909	014° 11'.023
	M	36° 03'.909	014° 11'.086



Transport Malta

On chart 2 (Malta)

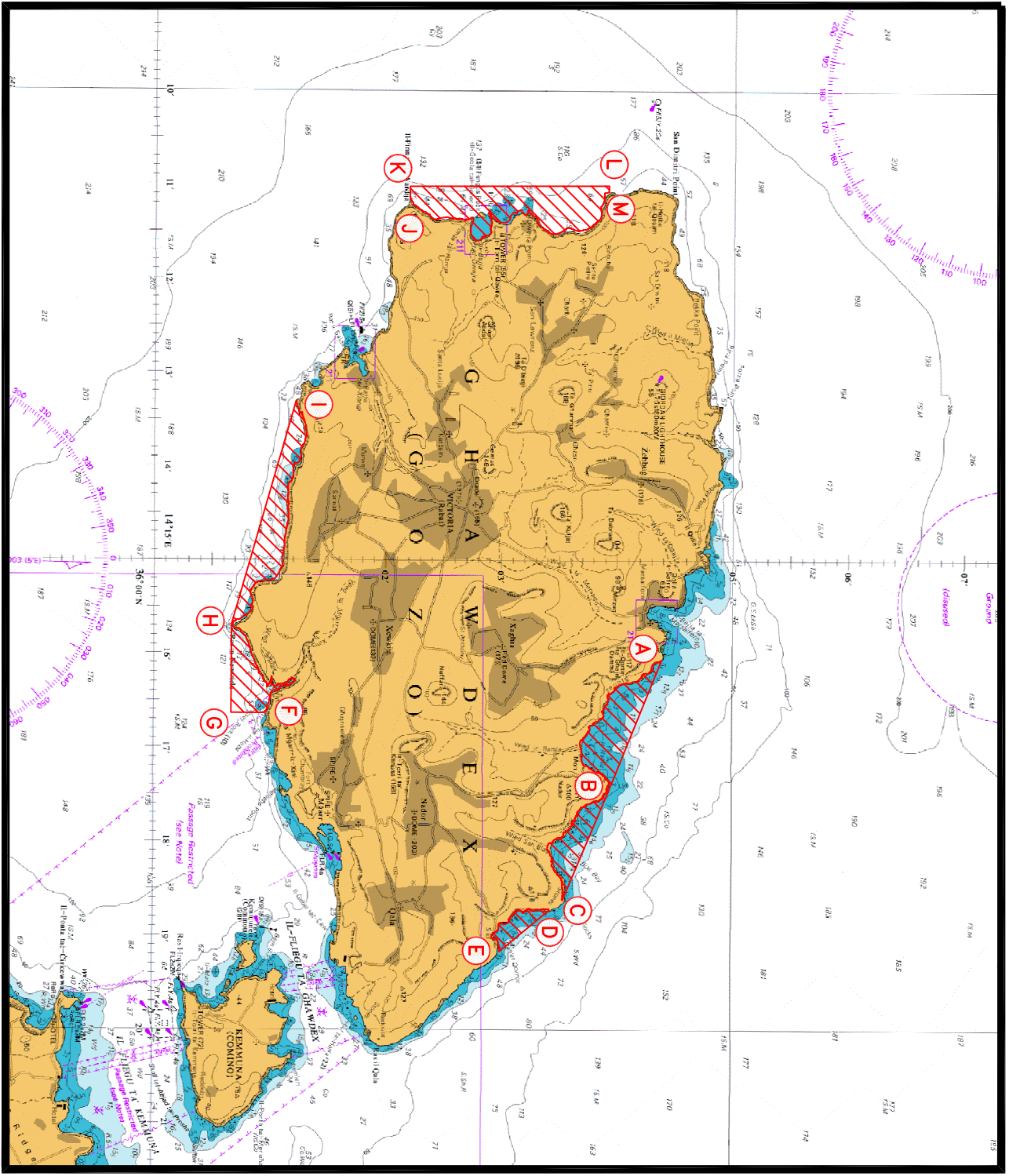
Area	Point	Latitude (N)	Longitude (E)
Mellieha Bay	A	35° 59'.294	014° 22'.584
	B	35° 58'.288	014° 22'.767
St. Paul's Bay	C	35° 57'.822	014° 23'.878
	D	35° 57'.429	014° 25'.042
Salina Bay	E	35° 57'.593	014° 25'.813
	F	35° 57'.291	014° 25'.985
Rdum Majjiesa to Ghar Lapsi	G	35° 49'.101	014° 27'.974
	H	35° 48'.452	014° 26'.375
	I	35° 49'.428	014° 24'.874
	J	35° 52'.635	014° 19'.964
	K	35° 54'.074	014° 19'.009
	L	35° 56'.683	014° 19'.010
	M	35° 56'.684	014° 19'.944
Filfla Island	N	35° 47'.766	014° 25'.030
	O	35° 46'.736	014° 25'.037
	P	35° 46'.729	014° 23'.687
	Q	35° 47'.759	014° 23'.679

Mariners and operators of sea craft are advised to keep a sharp lookout and proceed at slow speed (no wake) while navigating in the above areas. They are to give the vessel "SIMO" a wide berth of 500m, since she will be towing equipment behind and therefore restricted in her ability to manoeuvre.

Moreover, they are requested to comply with instructions given by Valletta Port Control (Valletta VTS) on VHF Channel 12.

Chart affected: **BA 211, 2537, 2538**

Positions referred to **WGS 84 DATUM.**



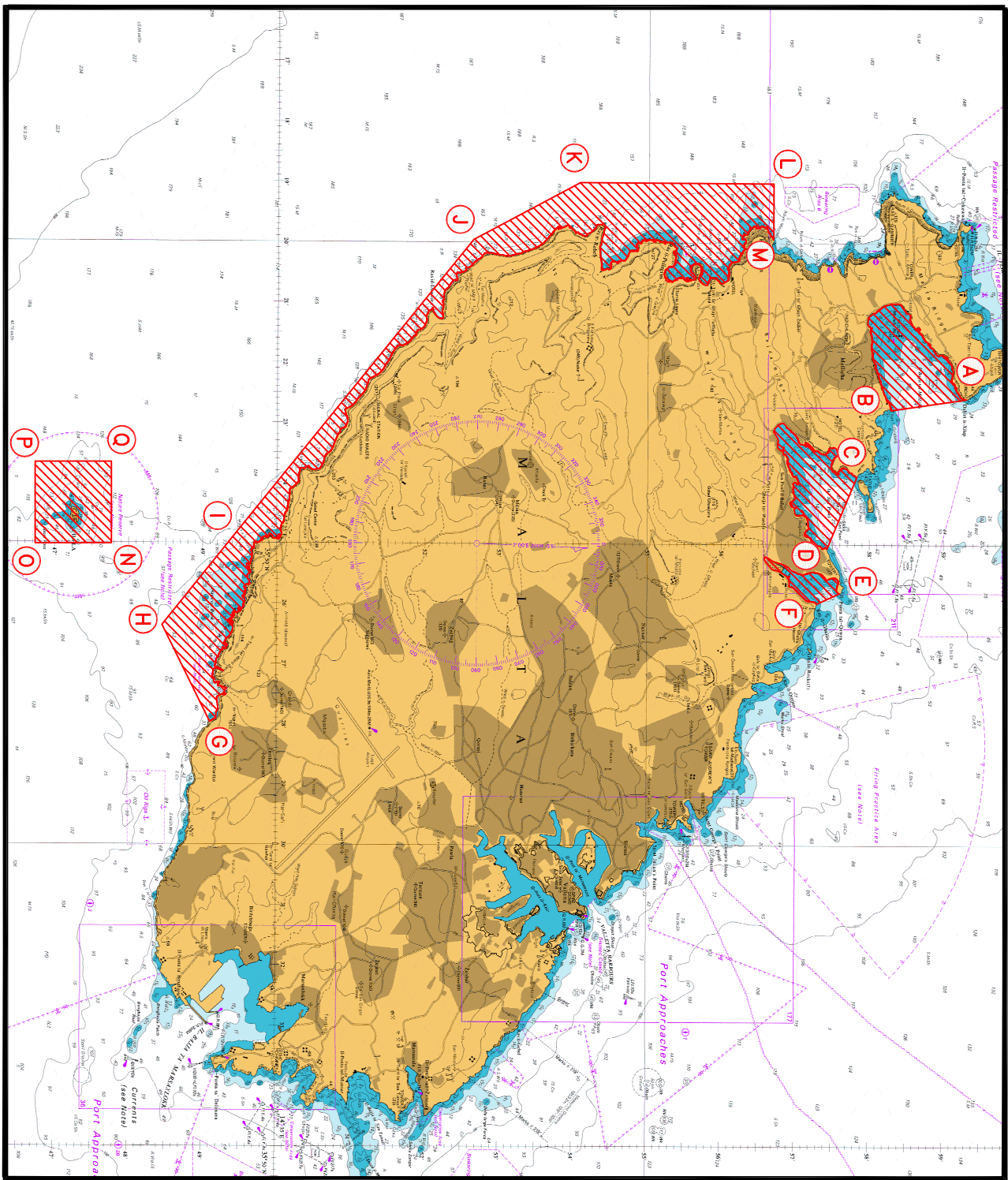
© British Crown Copyright 1970, 1983, 1986, 1988, 1999, 2000
 All rights reserved.

The UK Hydrographic Office makes the accompanying data
 Available to Malta Maritime Authority (Transport Malta)
 Under the terms and conditions of agreement HO 1427/020930/01.

DISCLAIMER

Whilst the UK Hydrographic Office has endeavoured to ensure
 That the material supplied is suitable for the purpose described,
 It accepts no liability (to the maximum extent permitted by law)
 For any damage or loss of any nature arising from its use.
 The material supplied is used entirely at the Recipient's own risk.

Chart 1



© British Crown Copyright 1970, 1983, 1986, 1988, 1999, 2000
All rights reserved.

The UK Hydrographic Office makes the accompanying data
Available to Malta Maritime Authority (Transport Malta)
Under the terms and conditions of agreement HO 1427/020930/01.

DISCLAIMER

Whilst the UK Hydrographic Office has endeavoured to ensure
That the material supplied is suitable for the purpose described,
It accepts no liability (to the maximum extent permitted by law)
For any damage or loss of any nature arising from its use.
The material supplied is used entirely at the Recipient's own risk.

Chart 2