



PORTS AND YACHTING DIRECTORATE

LOCAL NOTICE TO MARINERS No 052 of 2020

Our Ref: **TM/PYD/87/97**

15 June 2020



Transport Malta

Malta Transport Centre
Marsa, MRS 1917
Malta

Tel: (356) 2122 2203
Fax: (356) 2125 0365
Email: info.tm@transport.gov.mt

www.transport.gov.mt

Repair works on both Breakwater Arms, Grand Harbour – Valletta

The Ports and Yachting Directorate, Transport Malta notifies mariners that repair works will be carried out on both St. Elmo Breakwater Arm and Ricasoli Breakwater Arm, Grand Harbour – Valletta.

Works will start with immediate effect and are expected to be completed by Thursday 15th October 2020.

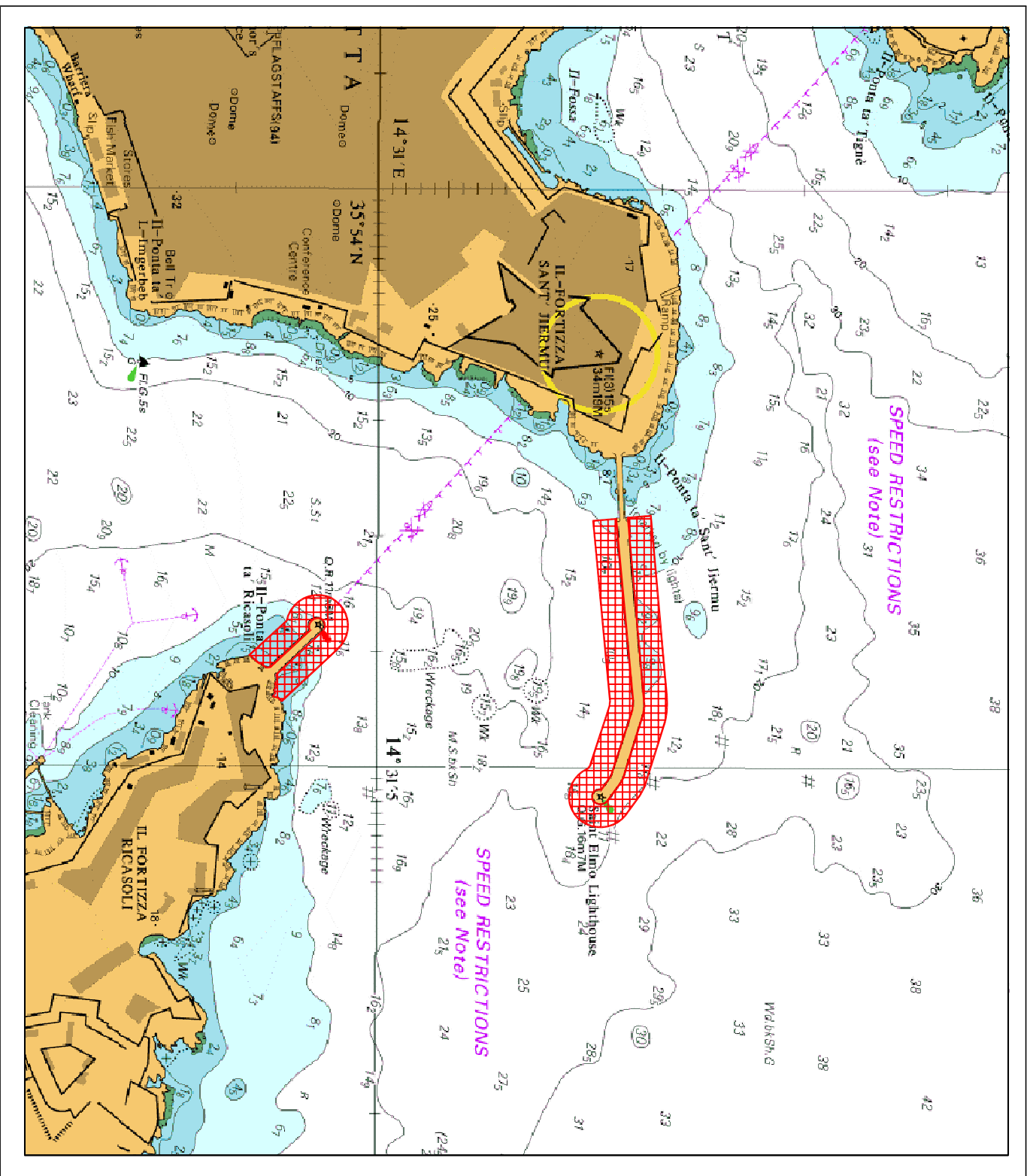
The works will be carried out within the areas shown hatched in red on attached chart and consist of the retrieval of hard stone slabs from the seabed and replacing missing coping slabs.

A diver will be involved in the works and will be assisted by the following vessels, Seawolf II, Betty, Hurricane, B45 which will be displaying the international code of Signals flag "A" when diving is taking place

Masters and vessel operators are instructed that with immediate effect and until further notice they are to keep a sharp lookout, navigate with caution and slow speed (No Wake) and give the above-mentioned vessels and diver a wide berth.

Masters of all vessels are also advised to keep a constant watch on VHF channel 12 for any new information which will be advised by Valletta Port Control (Valletta VTS).

Chart Affected: **BA 177**



© British Crown Copyright 1970, 1983, 1986, 1988, 1999, 2000
All rights reserved.

The UK Hydrographic Office makes the accompanying data
Available to Malta Maritime Authority (Transport Malta)
Under the terms and conditions of agreement HO 1427/020930/01.

DISCLAIMER

Whilst the UK Hydrographic Office has endeavoured to ensure
That the material supplied is suitable for the purpose described,
It accepts no liability (to the maximum extent permitted by law)
For any damage or loss of any nature arising from its use.
The material supplied is used entirely at the Recipient's own risk.