



PORTS AND YACHTING DIRECTORATE

Transport Malta

## LOCAL NOTICE TO MARINERS No 039 of 2020

Our Ref: **TM/PYD/38/99/1 Vol III**

Malta Transport Centre  
Marsa, MRS 1917  
Malta

Tel: (356) 2122 2203  
Fax: (356) 2125 0365  
Email: [info.tm@transport.gov.mt](mailto:info.tm@transport.gov.mt)

18 May 2020

[www.transport.gov.mt](http://www.transport.gov.mt)

### Temporary Mooring of several Fish Farm Cages at il Bajja ta' Marsaxlokk

The Ports and Yachting Directorate, Transport Malta, notifies mariners that with immediate effect several fish farm cages have been noted within the area A, B, C, D, E, F and G as shown hatched on attached chart.

	Latitude (N)	Longitude (E)
A	35°49'.771	014°32'.967
B	35°49'.823	014°33'.086
C	35°49'.903	014°33'.082
D	35°50'.011	014°33'.039
E	35°50'.086	014°32'.943
F	35°50'.065	014°32'.882
G	35°49'.942	014°32'.898

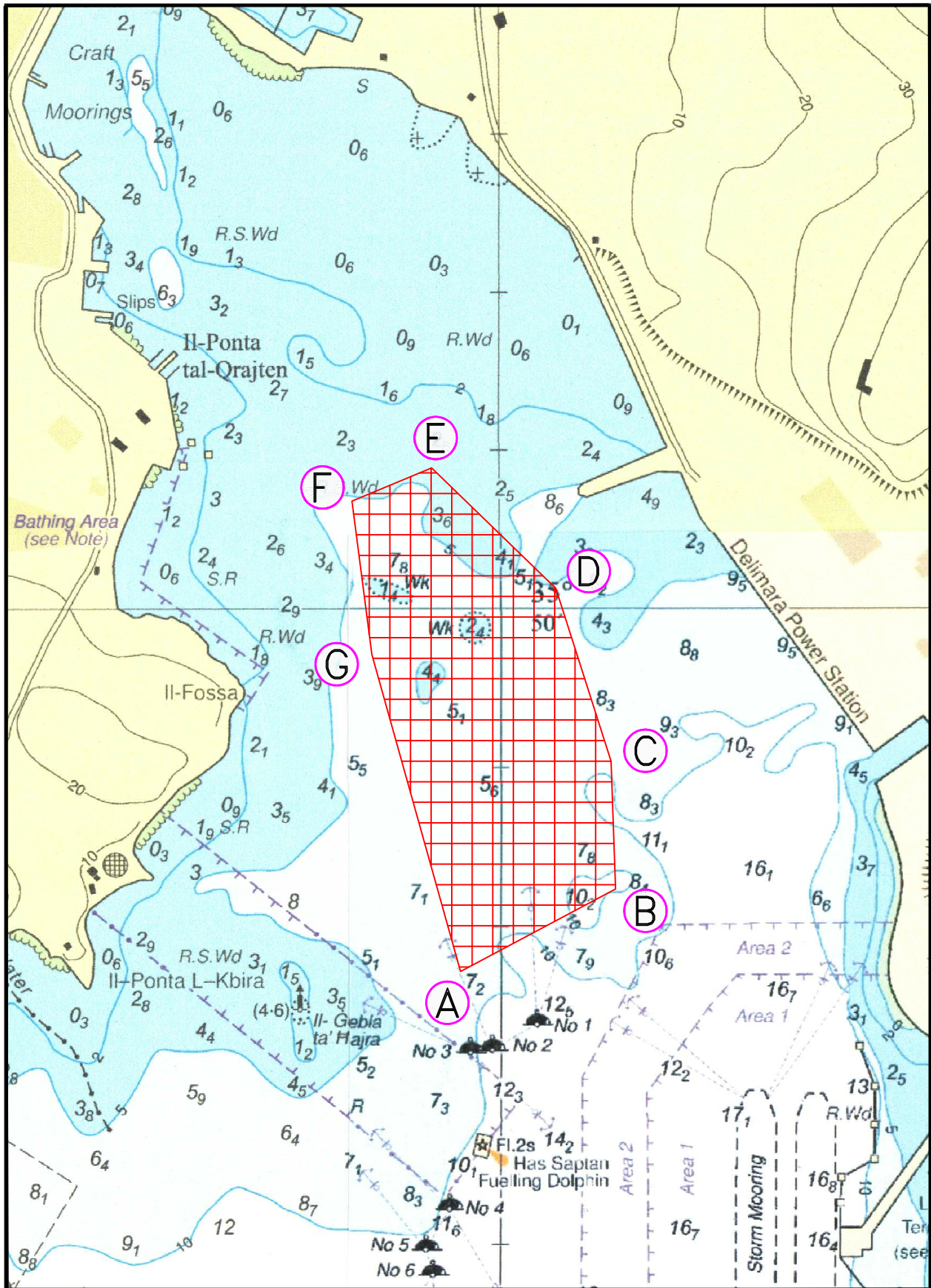
Some cages have UNRELIABLE lights on them, therefore the area is a hazard to navigation.

Masters of Vessels are warned to keep well clear and maintain a safe distance from the above positions.

Mariners are to note the above and navigate with caution and slow speed.

Position in: **WGS 84 Datum.**

Chart Affected: **BA Chart 36**



© British Crown Copyright 1970, 1983, 1986, 1988, 1999, 2000  
 All rights reserved.

The UK Hydrographic Office makes the accompanying data  
 Available to Malta Maritime Authority (Transport Malta)  
 Under the terms and conditions of agreement HO 1427/020930/01.

**DISCLAIMER**

Whilst the UK Hydrographic Office has endeavoured to ensure  
 That the material supplied is suitable for the purpose described,  
 It accepts no liability (to the maximum extent permitted by law)  
 For any damage or loss of any nature arising from its use.  
 The material supplied is used entirely at the Recipient's own risk.