



PORTS AND YACHTING DIRECTORATE

Transport Malta

## LOCAL NOTICE TO MARINERS No 037 of 2020

Our Ref: **TM/PYD/132/92**

Malta Transport Centre  
Marsa, MRS 1917  
Malta

Tel: (356) 2122 2203  
Fax: (356) 2125 0365  
Email: [info.tm@transport.gov.mt](mailto:info.tm@transport.gov.mt)

15 May 2020

[www.transport.gov.mt](http://www.transport.gov.mt)

### Special Mark Buoys Delineating the 200 and 300 metre Speed Restriction Zones

The Ports and Yachting Directorate, Transport Malta notifies mariners that in addition to the permanent speed limit buoys, special marker buoys will be placed around the Maltese Islands to delineate the 200 and 300 metre speed restriction zones (10 Knots and 5 Knots) from the shore. The placement of the buoys is seasonal, from June to October but may still be in place after this date.

BA Chart: **2537, 211A 194**

Special Mark Buoys 1.5 metres in diameter, fitted with a light flashing yellow 1 every 4 seconds and a 2 nautical miles range, shall be placed in the following positions:

	Bays	Speed	Latitude	Longitude
A1	Marsalforn	10 Knots	36° 04'.564	014° 15'.843
A2	Comino	10 Knots	36° 01'.303	014° 20'.379
A3	Qawra	10 Knots	35° 57'.732	014° 25'.817
A4	Dragonara Point	10 Knots	35° 55'.729	014° 29'.748
A5	Dragut Point	10 Knots	35° 54'.500	014° 31'.007

Further to the above yellow cylindrical buoys which are 0.9 metres in diameter, flashing yellow 1 every 4 seconds and having a 2 nautical miles range, will be placed in the following positions:



**Transport Malta**  
Longitude

	Bays	Speed	Latitude	Longitude
B1	Ramla l-Hamra	10 Knots	36° 03'.827	014° 17'.018
B3	San Niklaw	10 Knots	36° 01'.264	014° 19'.804
B6	Santa Marija	10 Knots	36° 01'.216	014° 20'.108
B14	Cirkewwa	10 Knots	35° 59'.059	014° 19'.789
B15	Armier	10 Knots	35° 59'.527	014° 21'.460
B16	Little Armier	10 Knots	35° 59'.627	014° 21'.602
B17	Mellieha	10 Knots	35° 59'.153	014° 22'.681
B18	Mellieha	10 Knots	35° 58'.809	014° 21'.921
B19	Mellieha	10 Knots	35° 58'.466	014° 21'.400
B23	Mellieha	10 Knots	35° 58'.190	014° 21'.987
B24	Mellieha	10 Knots	35° 58'.394	014° 22'.711
B25	Il-Gzejjer North	10 Knots	35° 58'.076	014° 23'.974
B26	Il-Gzejjer South	10 Knots	35° 57'.942	014° 24'.601
B28	Ras il-Ghallis	10 Knots	35° 57'.400	014° 25'.968
B29	San Giljan	10 Knots	35° 55'.221	014° 29'.857
B30	Marsascala	10 Knots	35° 51'.907	014° 34'.432
B31	San Tumas	10 Knots	35° 51'.320	014° 34'.331
B32	Xorb l-Ghagin	10 Knots	35° 50'.298	014° 34'.030
B33	St. Peter's Pool	10 Knots	35° 49'.903	014° 33'.897
B34	Dellimara	10 Knots	35° 49'.388	014° 33'.857
B35	Il-Gnejna	10 Knots	35° 55'.473	014° 20'.354
B36	Ghajn Tuffieha	10 Knots	35° 55'.800	014° 20'.495
B37	Il-Mixquqa	10 Knots	35° 55'.965	014° 20'.464

The following buoys placed at Mgarr ix-Xini – Gozo, Blue Lagoon – Comino, Mellieha – off the beach and Xemxija inner, delineate a 5 Knots maximum speed limit.

B2	Mgarr ix-Xini	5 Knots	36° 00'.906	014° 16'.445
B4	San Niklaw Bay (Fairway 1)	5 Knots	36° 01'.167	014° 19'.770
B5	San Niklaw Bay (Fairway 9D)	5 Knots	36° 01'.039	014° 19'.773
B7	Santa Marija Bay (Fairway 1)	5 Knots	36° 01'.031	014° 20'.210
B8	Santa Marija Bay (Fairway 2)	5 Knots	36° 01'.111	014° 20'.210
B9	Blue Lagoon Outer	5 Knots	36° 01'.004	014° 19'.226
B10	Blue Lagoon (Fairway 5)	5 Knots	36° 00'.965	014° 19'.332
B11	Blue Lagoon (Fairway 3)	5 Knots	36° 00'.952	014° 19'.310
B12	Blue Lagoon (Fairway 2)	5 Knots	36° 00'.913	014° 19'.346
B13	Blue Lagoon (Fairway 1)	5 Knots	36° 00'.852	014° 19'.401
B20	Mellieha	5 Knots	35° 58'.398	014° 21'.247
B21	Mellieha	5 Knots	35° 58'.269	014° 21'.299
B22	Mellieha	5 Knots	35° 58'.133	014° 21'.480
B27	Xemxija	5 Knots	35° 57'.027	014° 23'.508

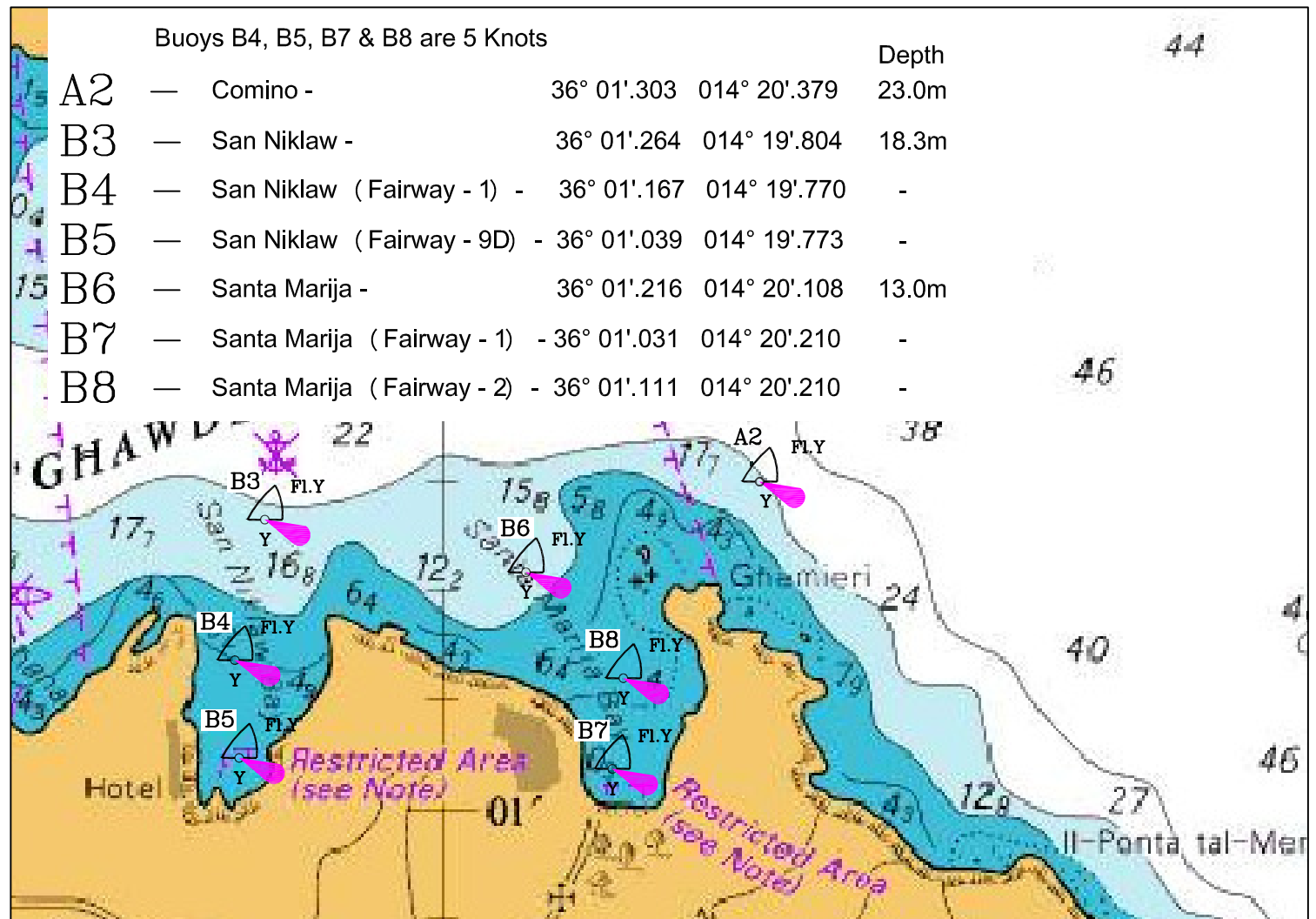
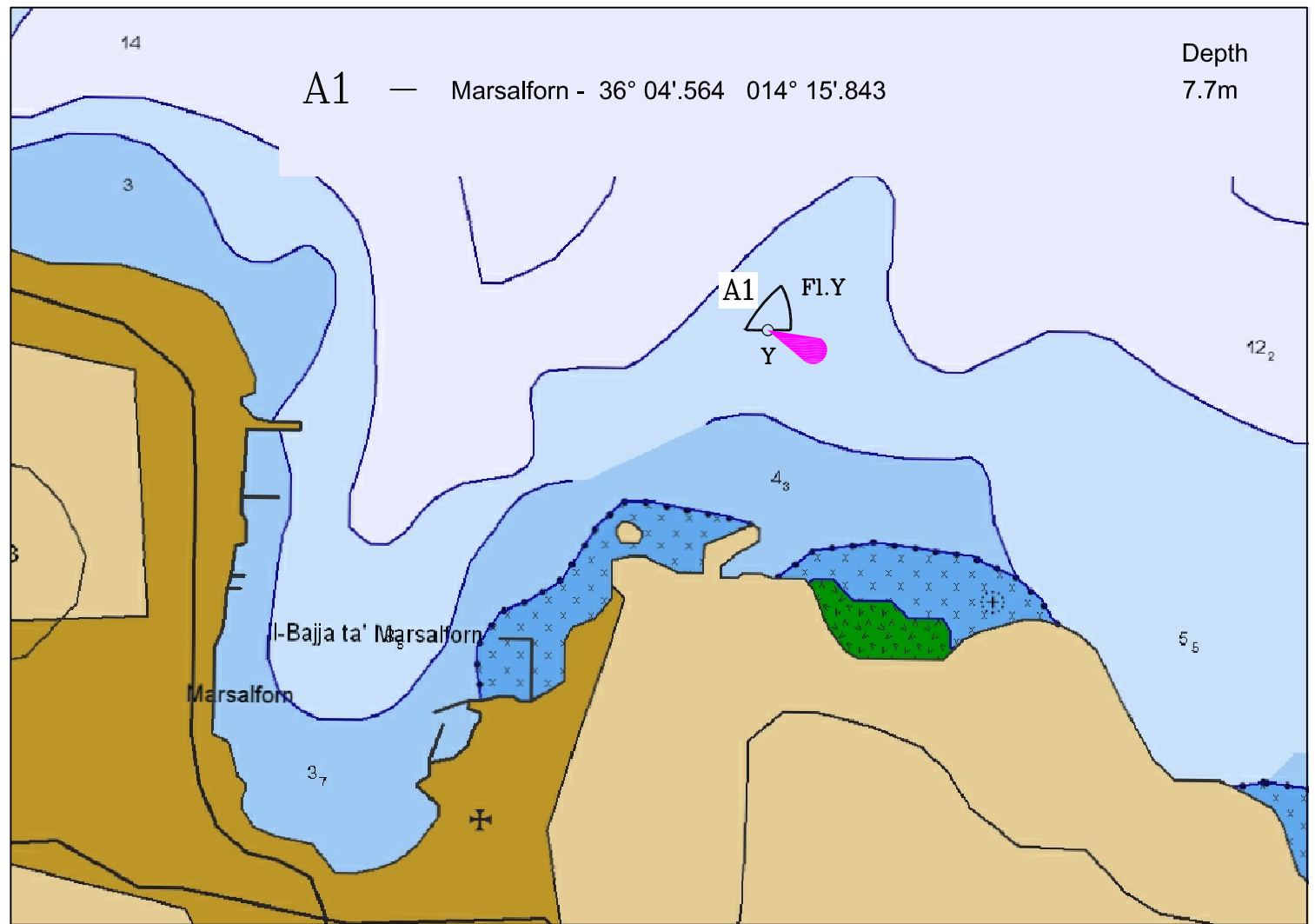


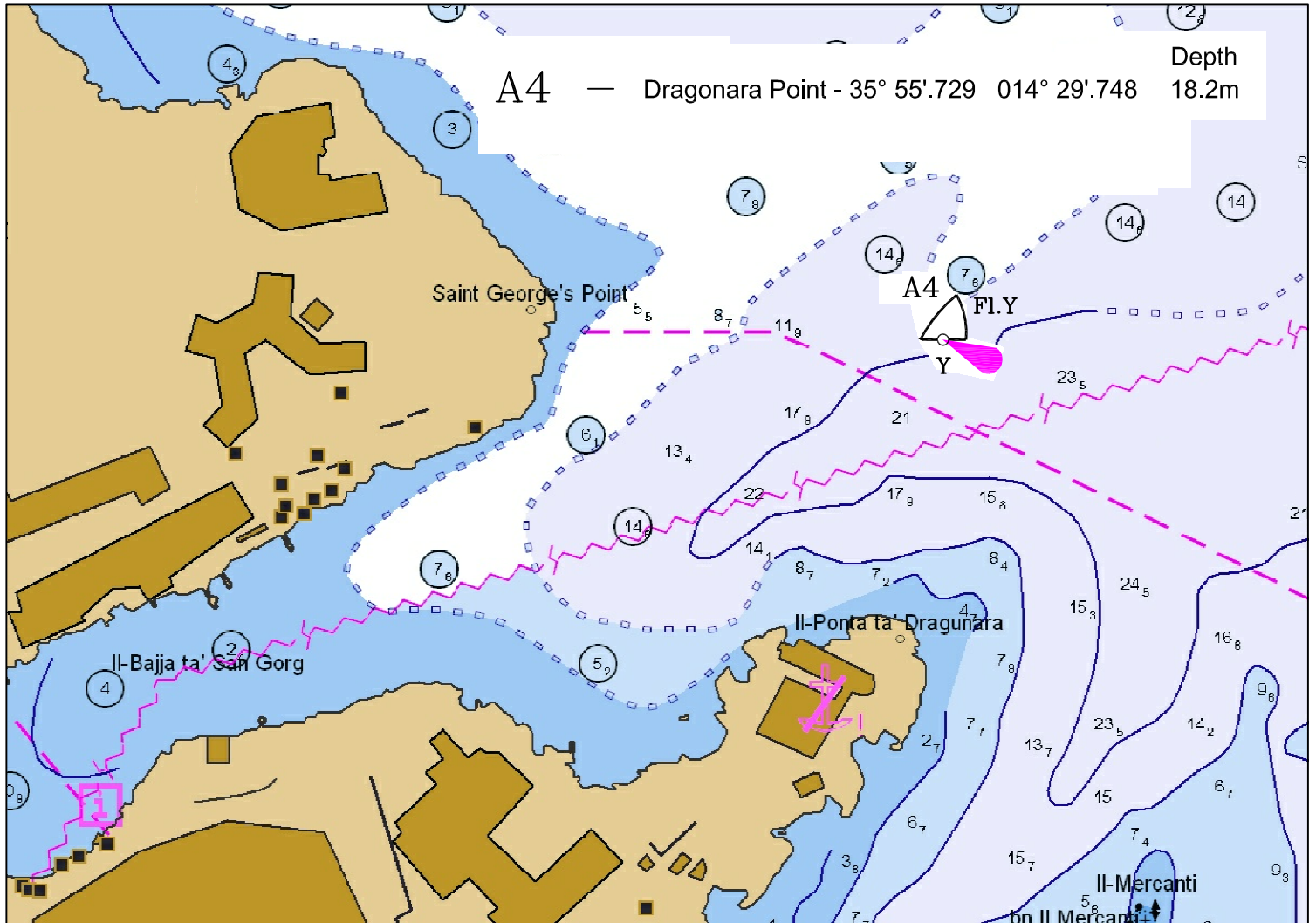
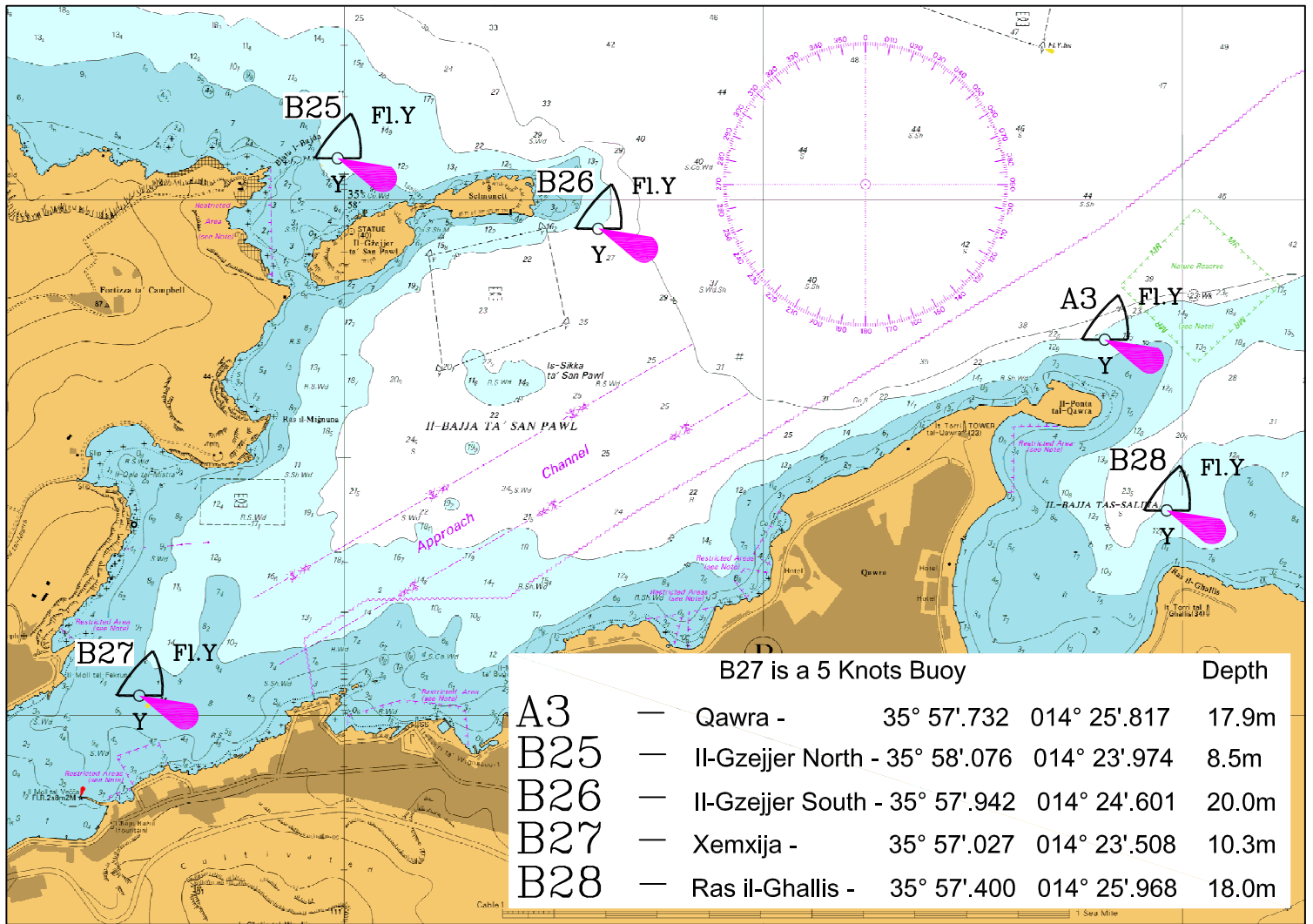
**Transport Malta**

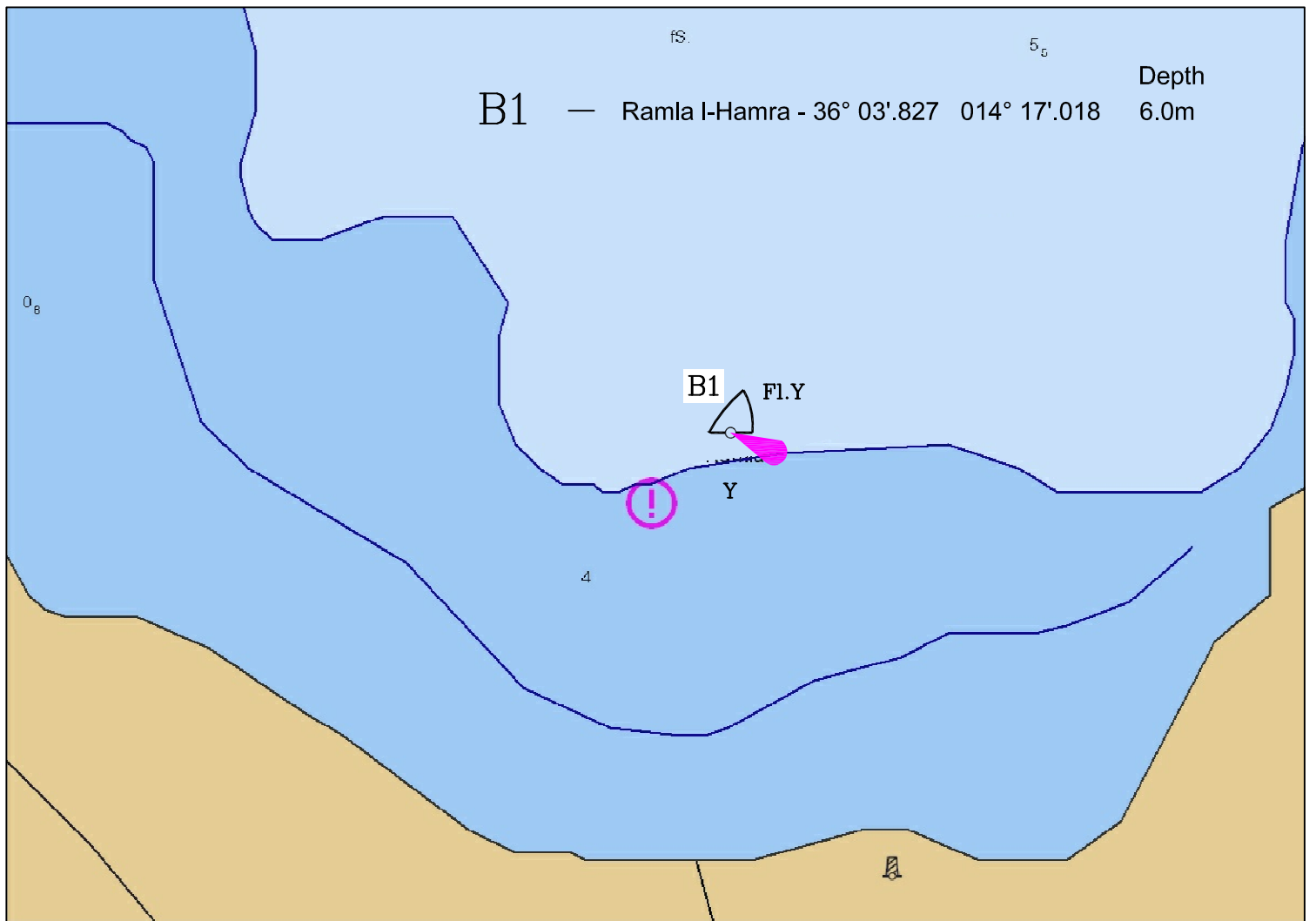
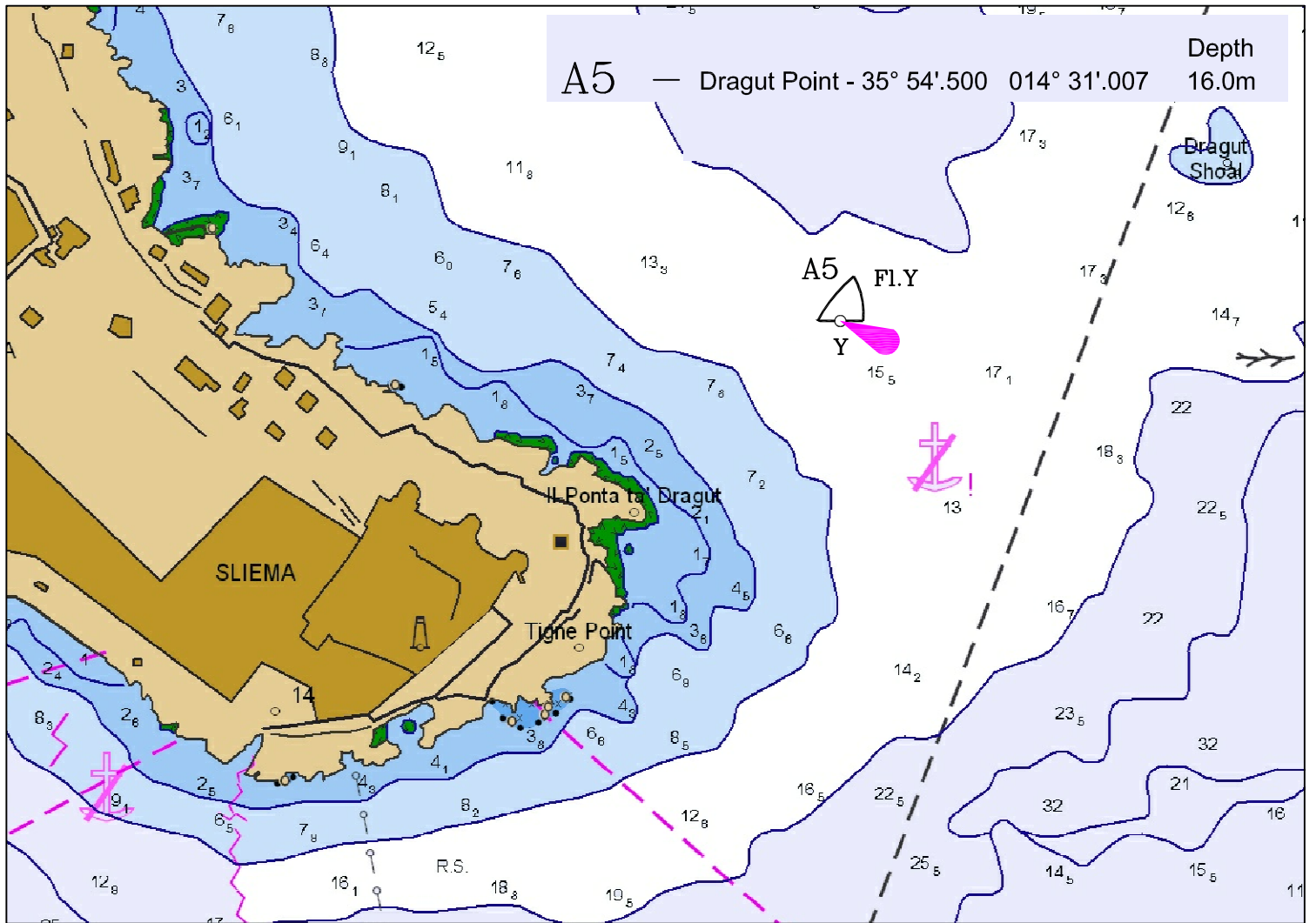
Buoys indicate the speed that should never be exceeded and in any case mariners are reminded to proceed at a safe speed at all times subject to the prevailing circumstances and conditions.

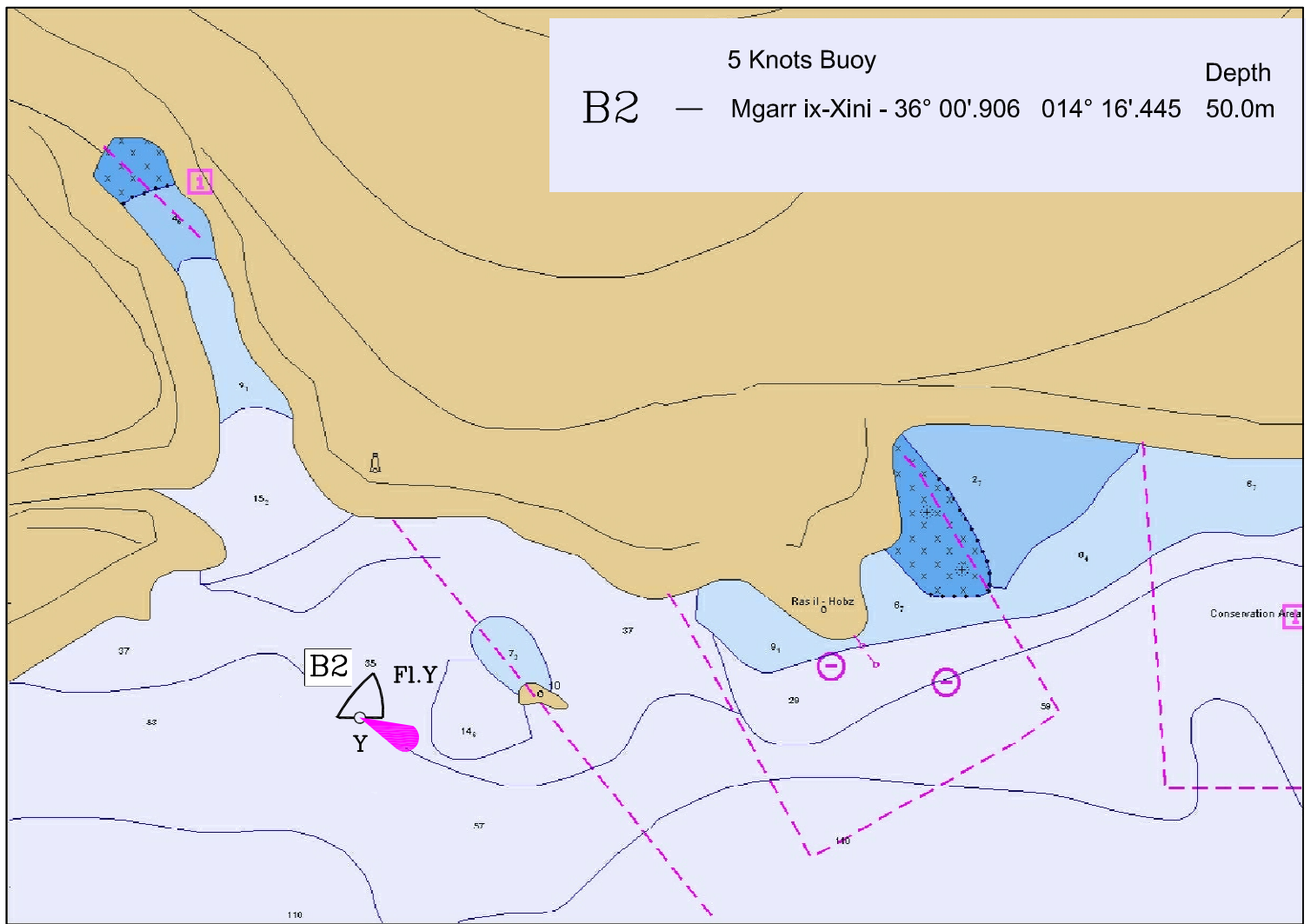
Mariners are further reminded that it is prohibited to moor any vessel to any of the above buoys and any other buoy owned by the Transport Malta and that the speed restriction is in place all year round even without the buoys in place. The deployment of the buoys may be delayed due to the present situation.

Charts affected: **BA 36, 177, 211A, 211B, 2537, 2538**

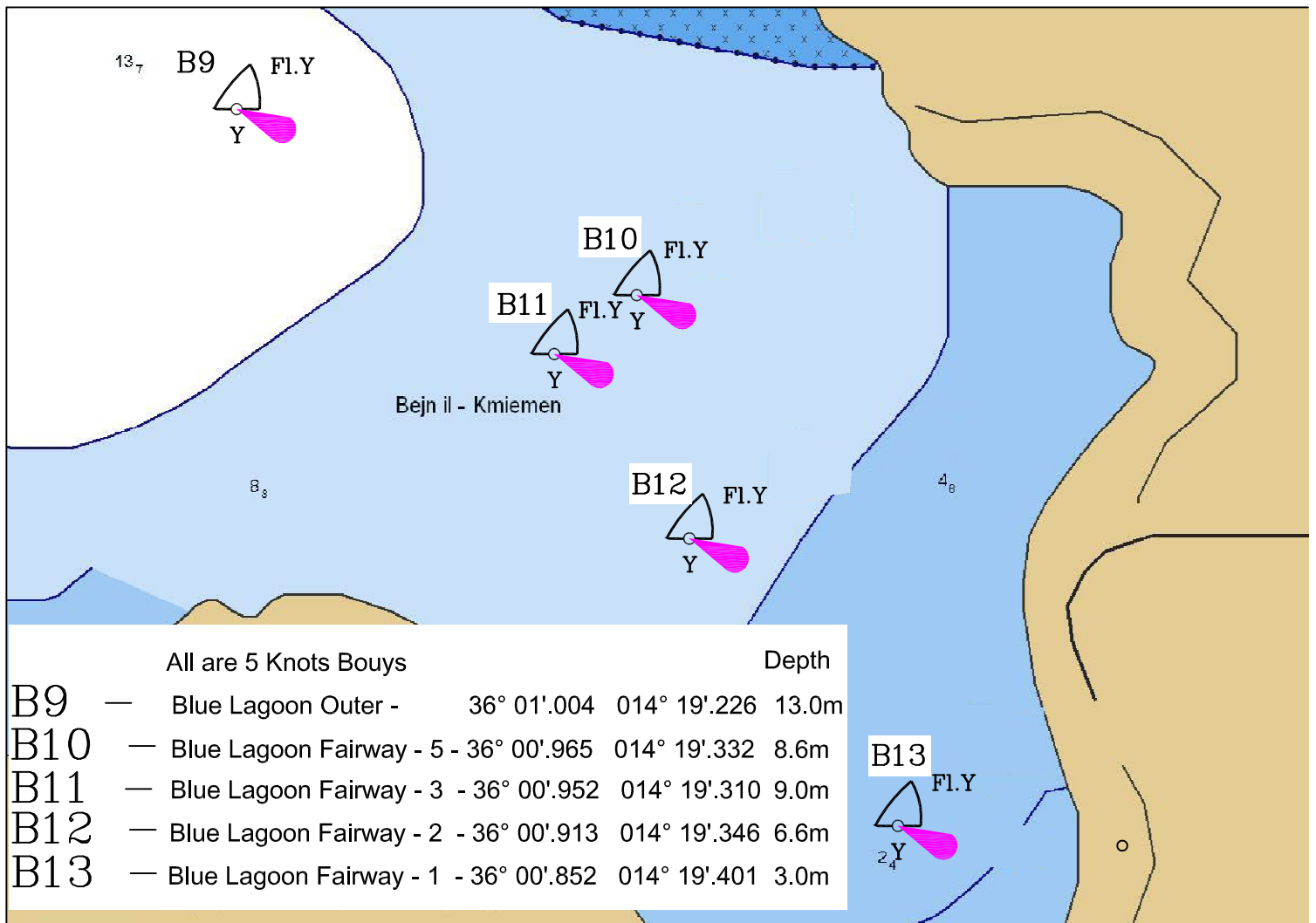








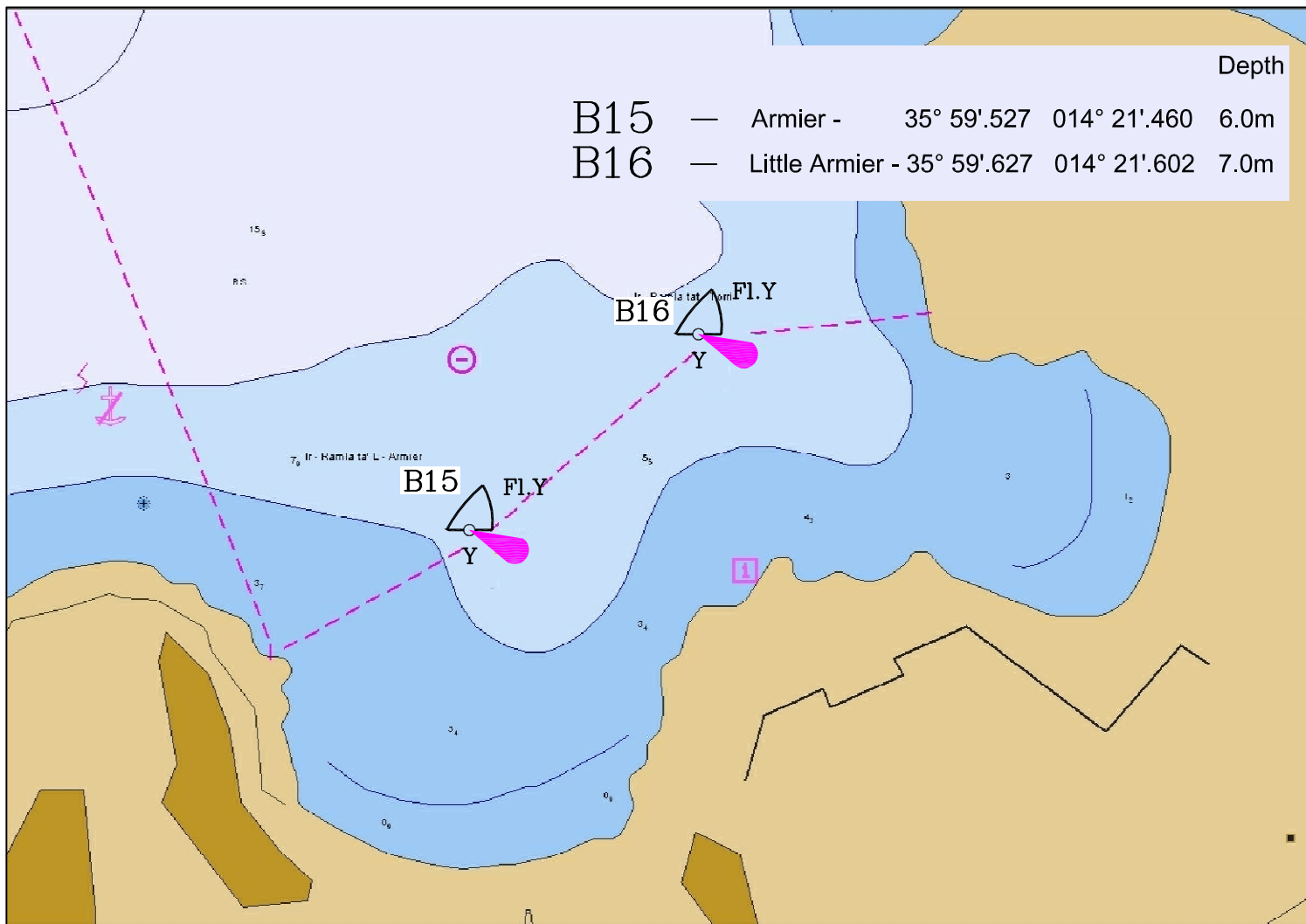
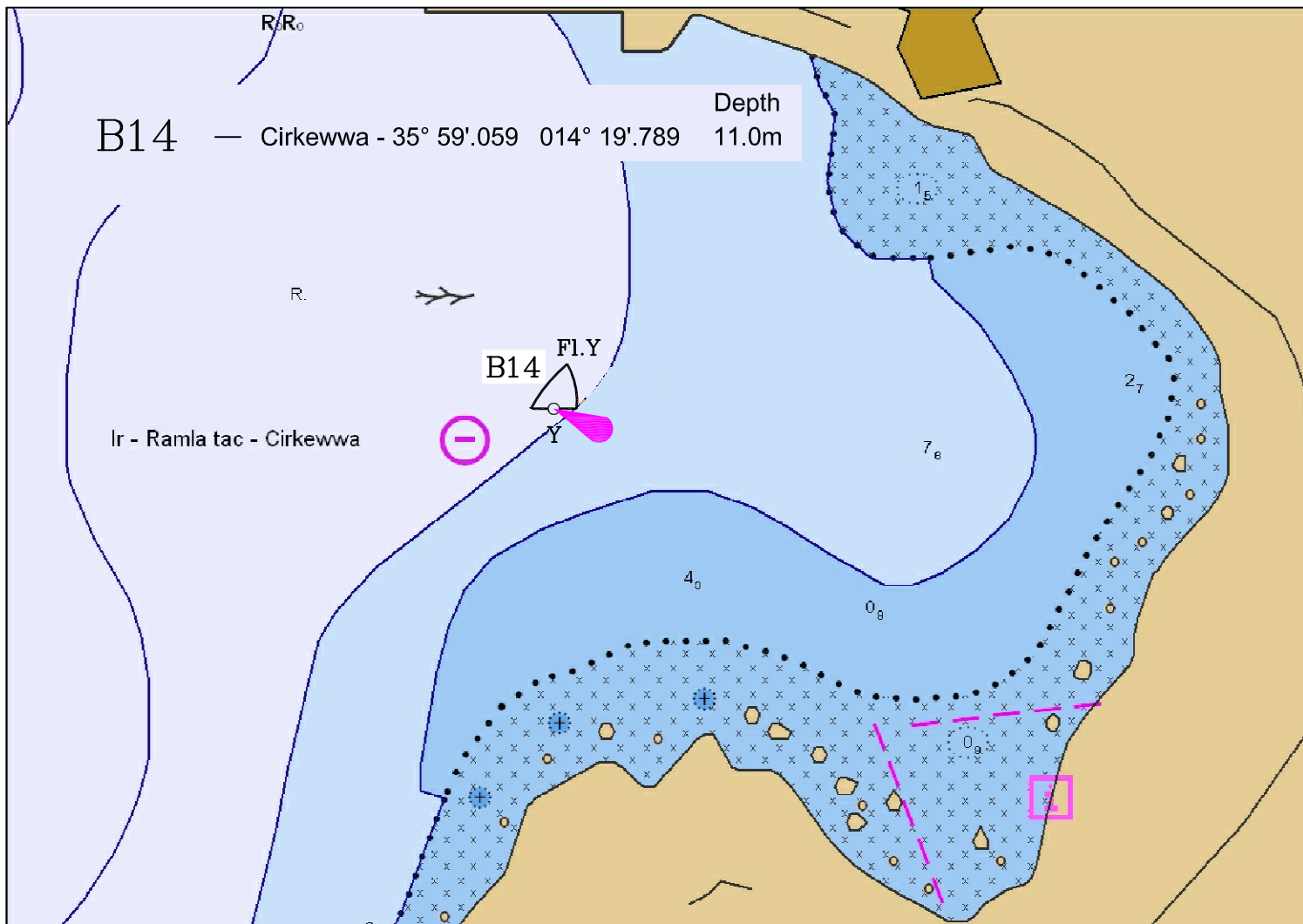
5 Knots Buoy  
**B2** — Mgarr ix-Xini - 36° 00'.906 014° 16'.445 50.0m



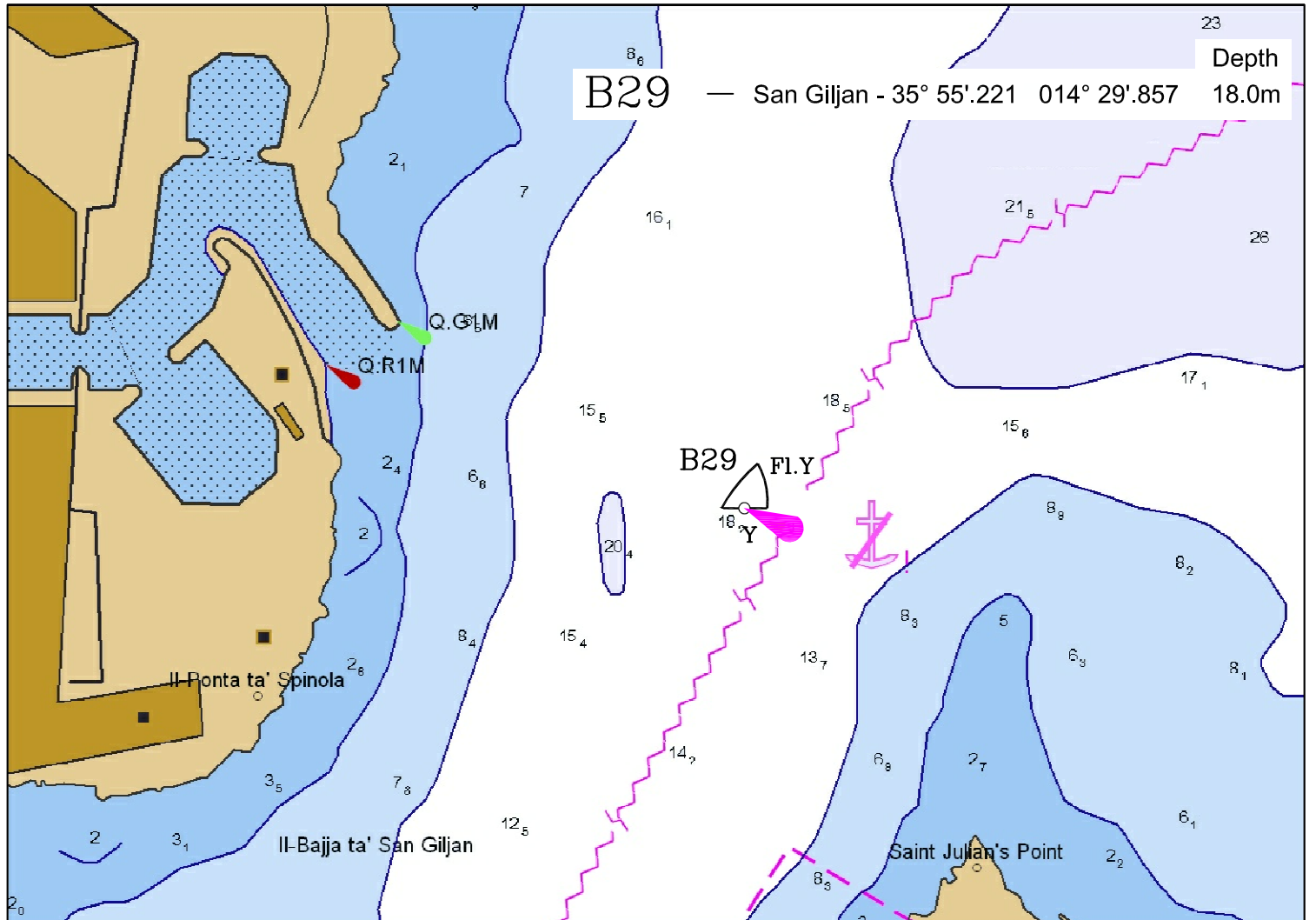
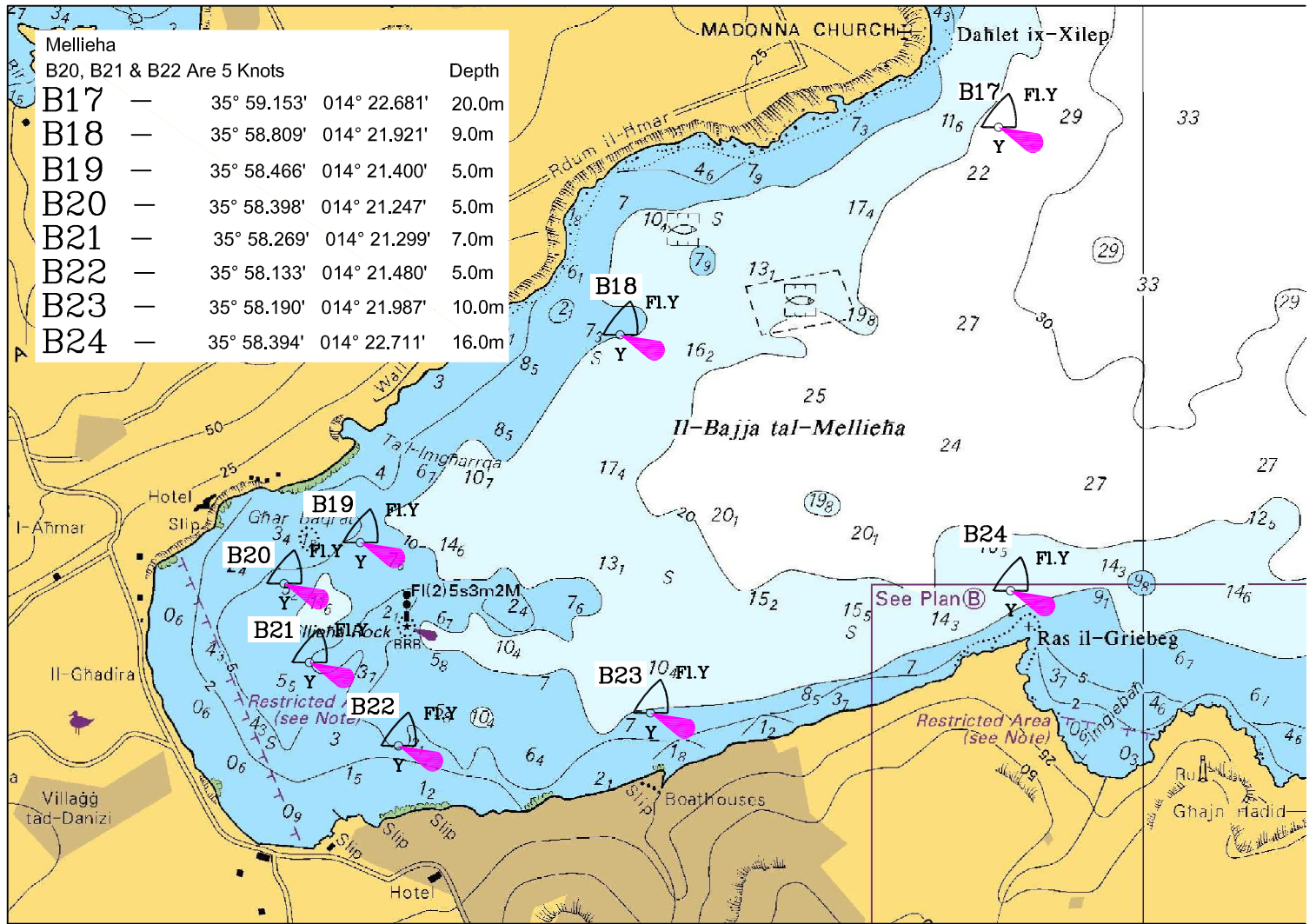
All are 5 Knots Buoys

- |            |   |                           |                          | Depth |
|------------|---|---------------------------|--------------------------|-------|
| <b>B9</b>  | — | Blue Lagoon Outer -       | 36° 01'.004 014° 19'.226 | 13.0m |
| <b>B10</b> | — | Blue Lagoon Fairway - 5 - | 36° 00'.965 014° 19'.332 | 8.6m  |
| <b>B11</b> | — | Blue Lagoon Fairway - 3 - | 36° 00'.952 014° 19'.310 | 9.0m  |
| <b>B12</b> | — | Blue Lagoon Fairway - 2 - | 36° 00'.913 014° 19'.346 | 6.6m  |
| <b>B13</b> | — | Blue Lagoon Fairway - 1 - | 36° 00'.852 014° 19'.401 | 3.0m  |

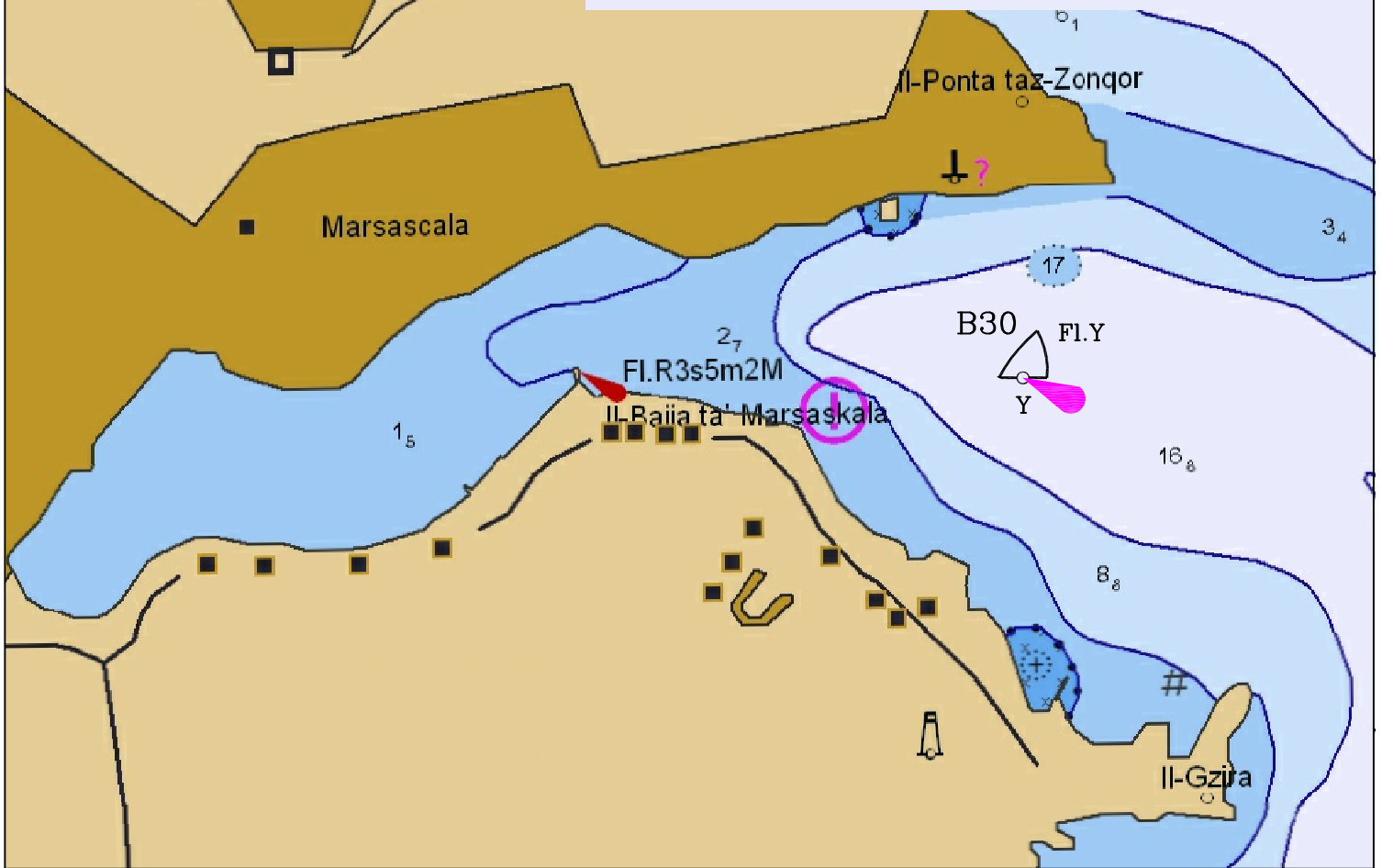
**B13** Fl.Y



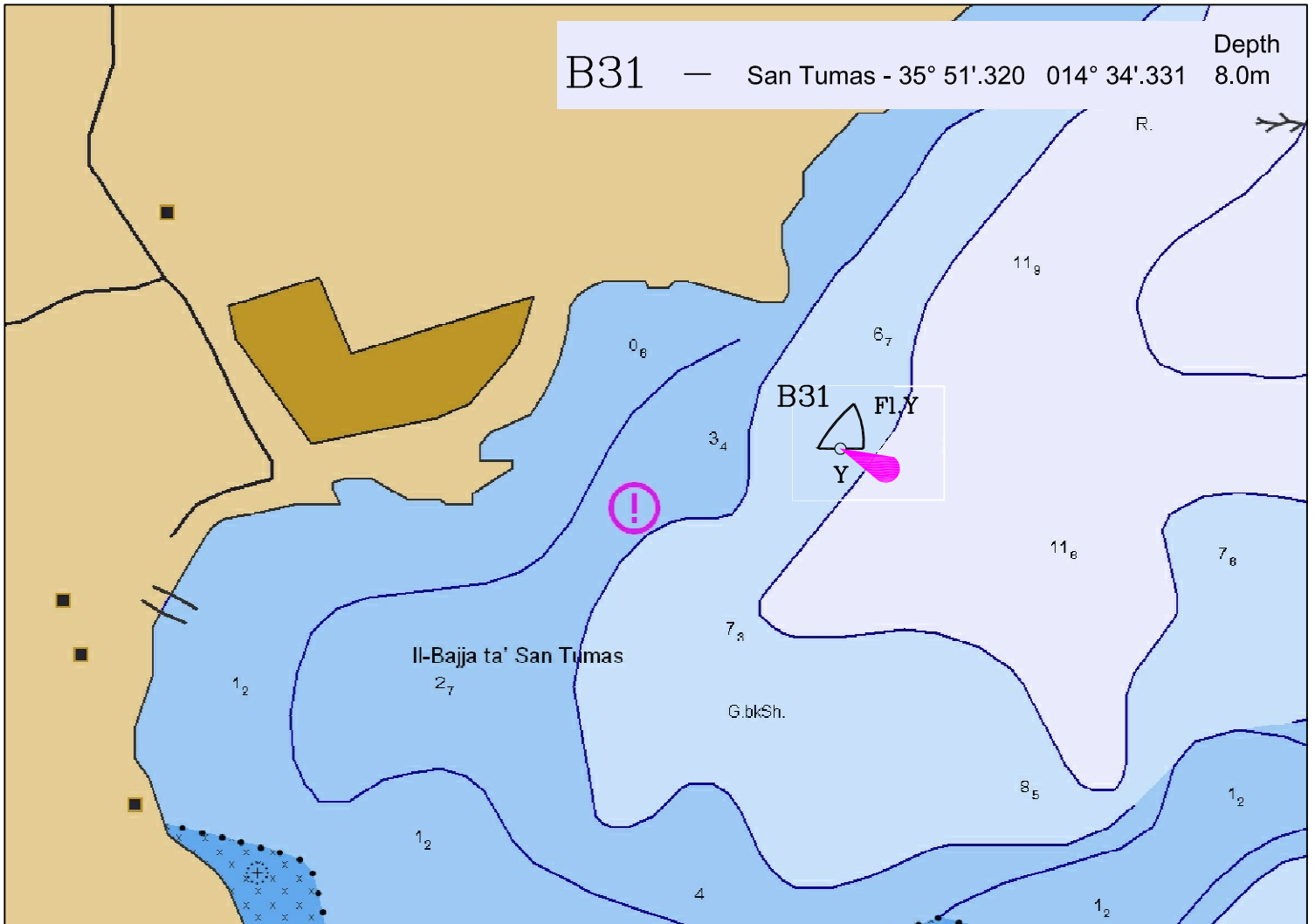


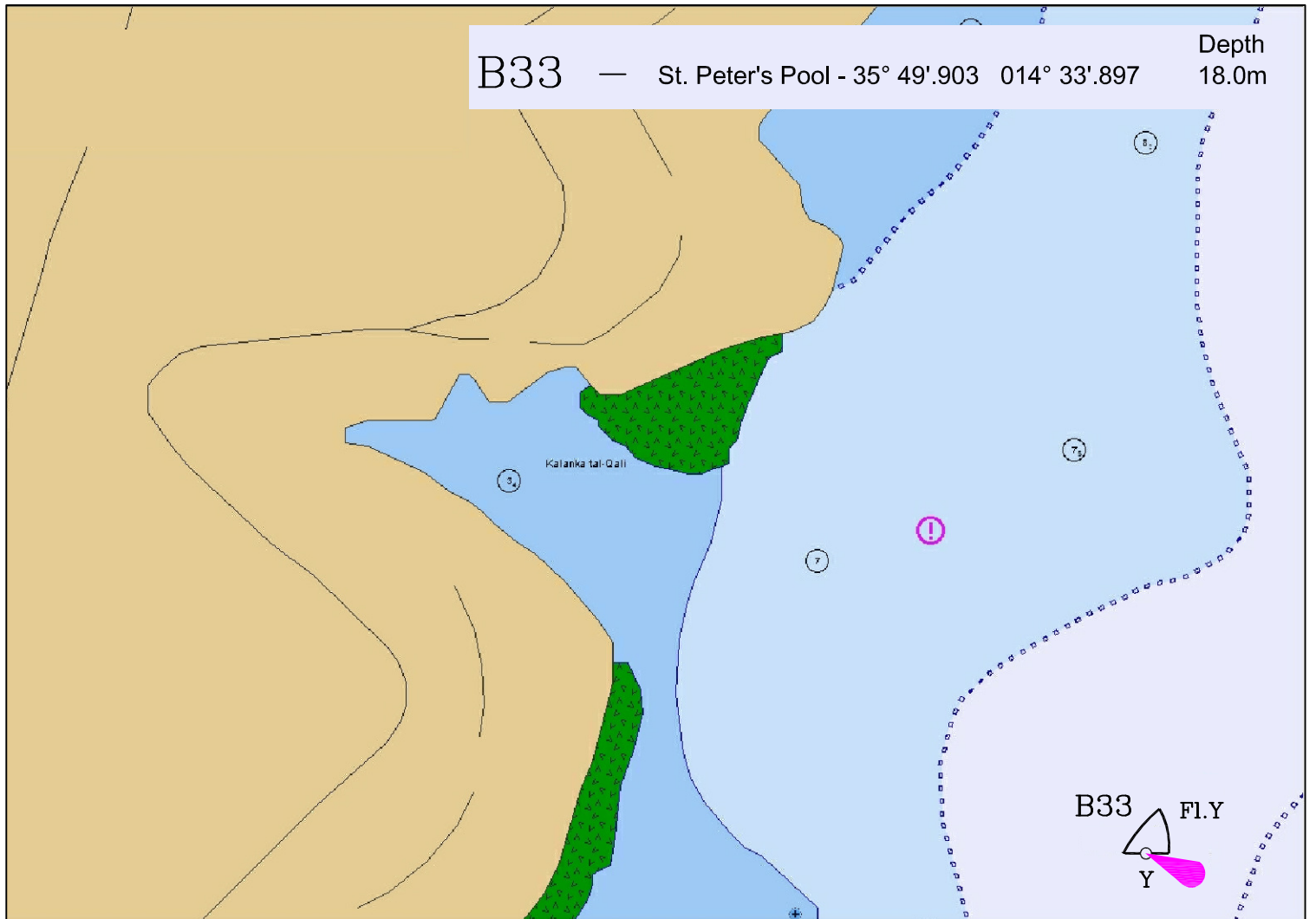
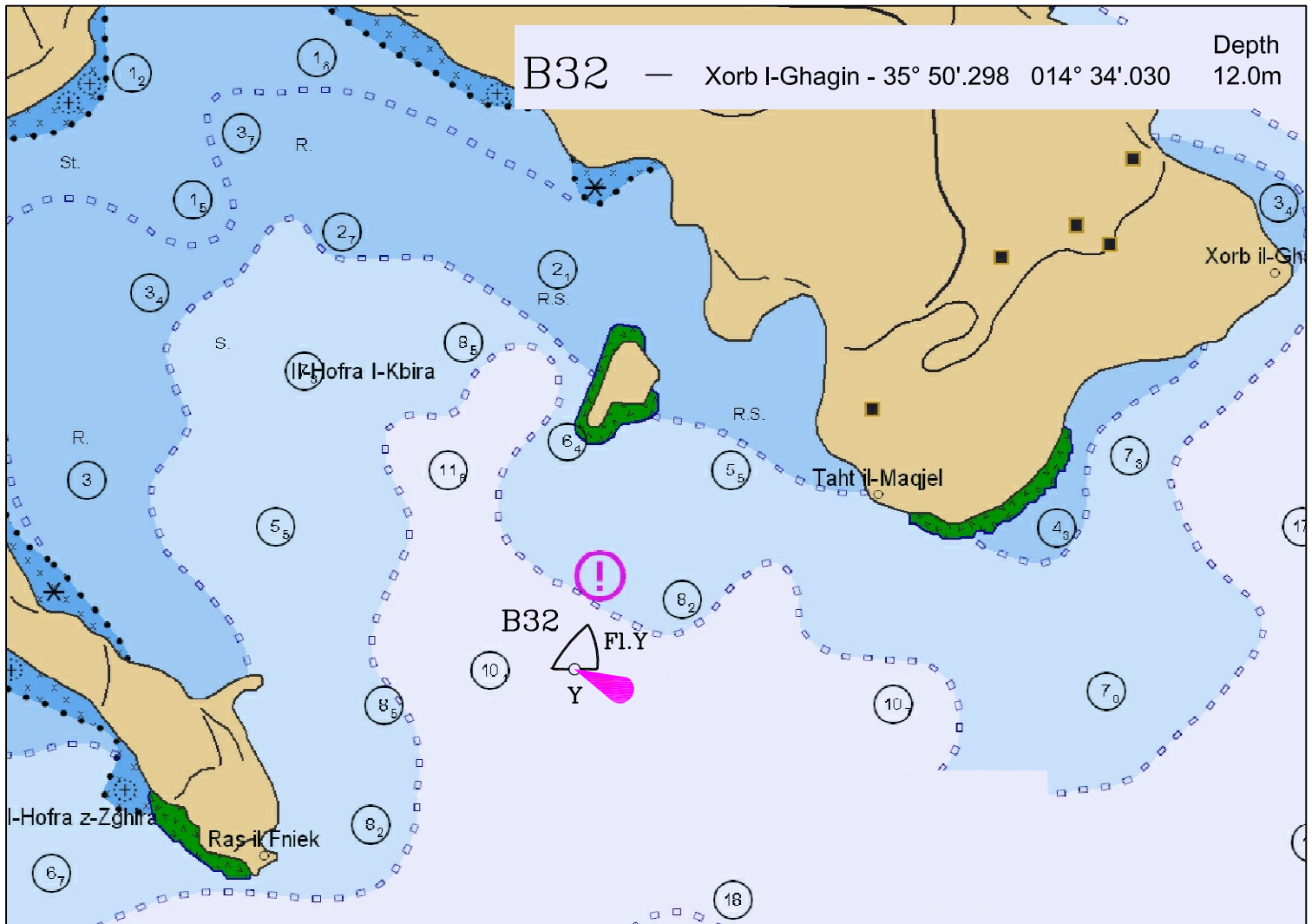


B30 — Marsascale - 35° 51'.907 014° 34'.432 Depth 16.0m



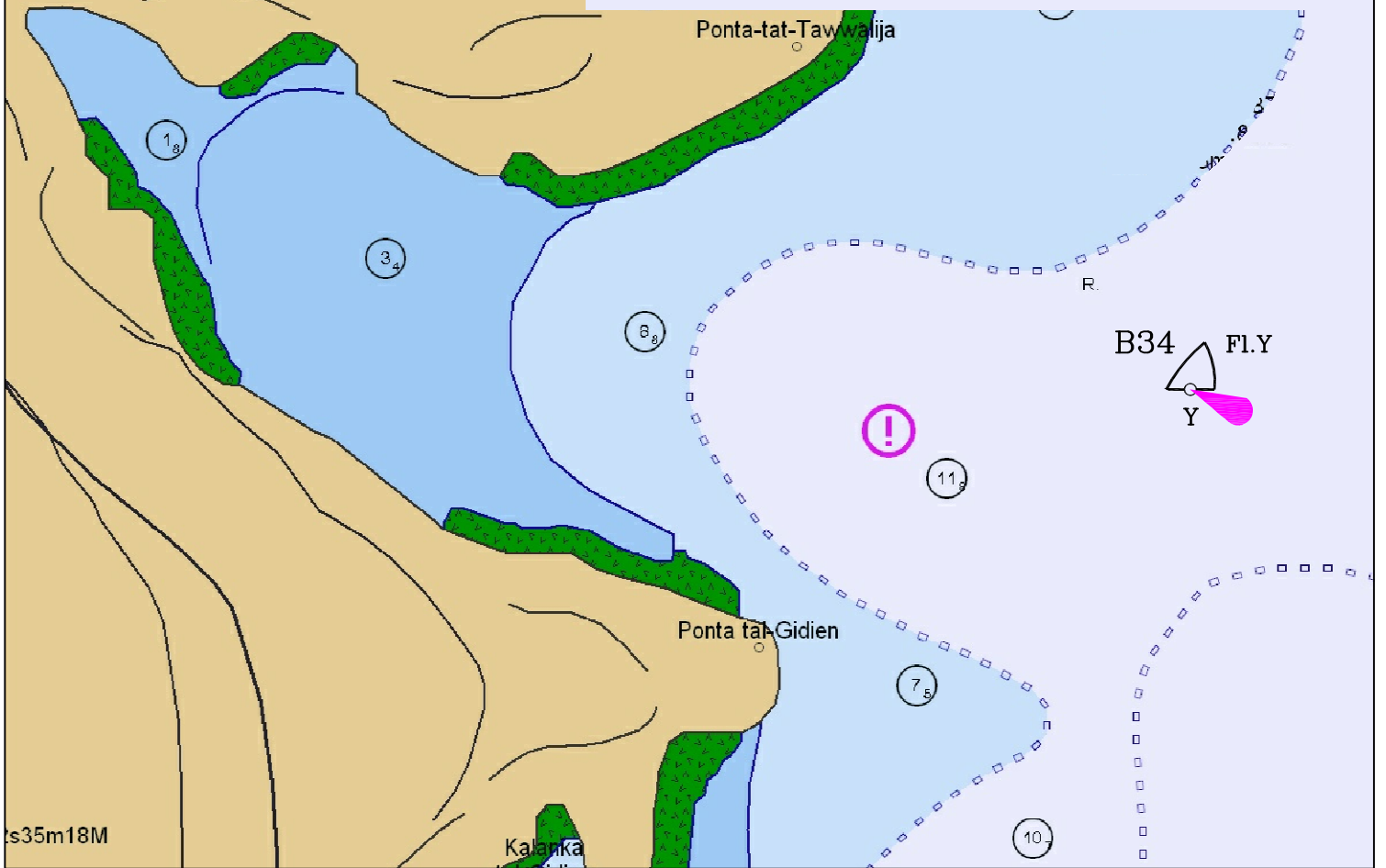
B31 — San Tumas - 35° 51'.320 014° 34'.331 Depth 8.0m





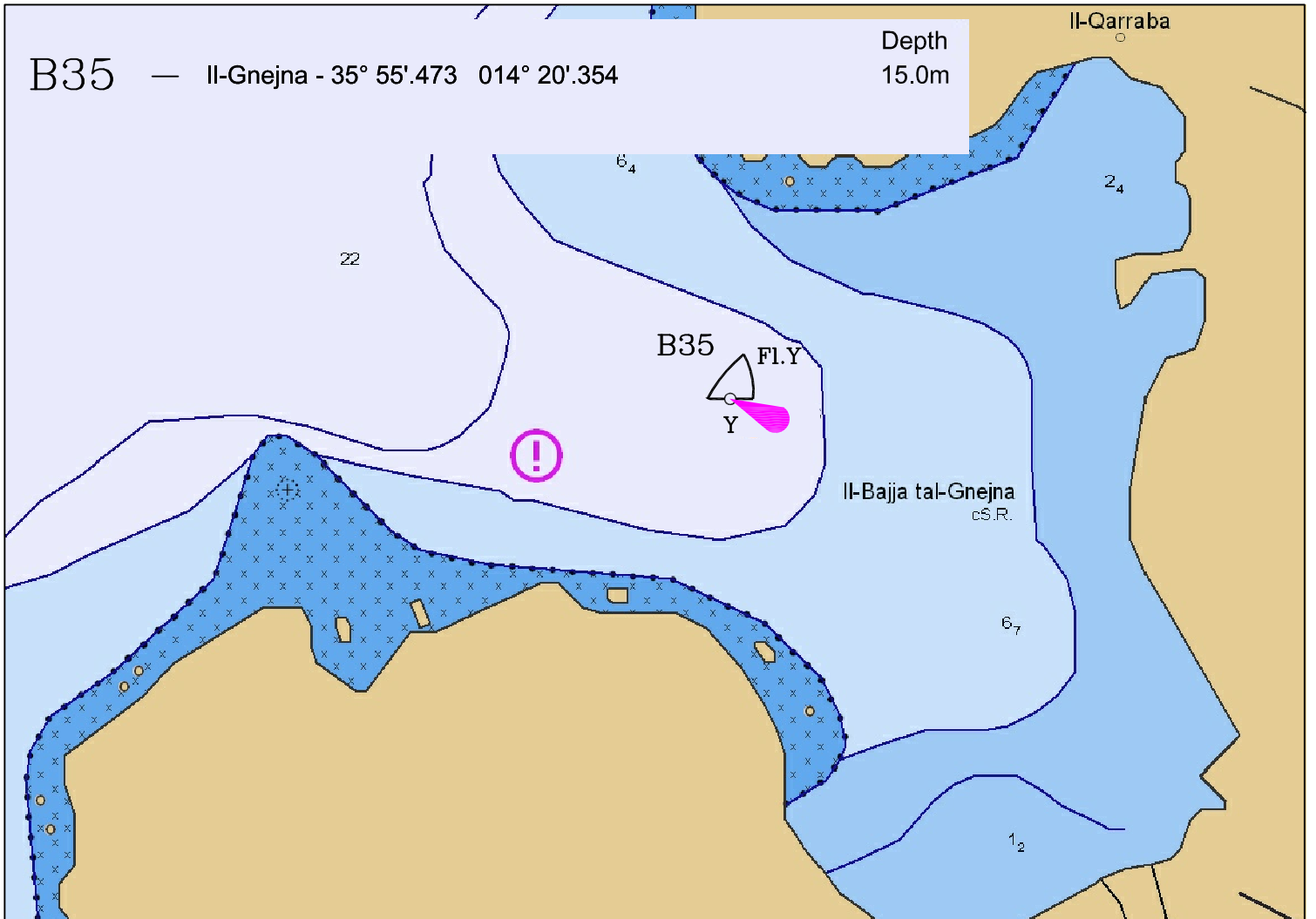
B34 — Dellimara - 35° 49'.388 014° 33'.857

Depth  
13.0m



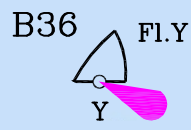
B35 — Il-Gnejna - 35° 55'.473 014° 20'.354

Depth  
15.0m



B36 — Ghajn Tuffieha - 35° 55'.800 014° 20'.495

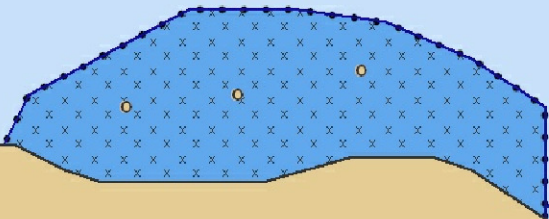
Depth  
7.0m



7<sub>8</sub>

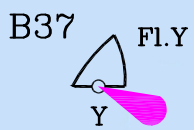
Ir-Ramla ta' Ghajn Tuffieha

2<sub>1</sub>



B37 — Il-Mixquqa - 35° 55'.965 014° 20'.464

Depth  
7.0m



0<sub>8</sub>

Ir-Ramla ta' Il-Mixquqa

7<sub>8</sub>

