



PORTS AND YACHTING DIRECTORATE

Transport Malta

NOTICE TO MARINERS No 09 of 2020

Our Ref: **TM/PYD/63/95**

Malta Transport Centre
Marsa, MRS 1917
Malta

Tel: (356) 2122 2203
Fax: (356) 2125 0365
Email: info.tm@transport.gov.mt

www.transport.gov.mt

28 January 2020

PEACE MED - Geophysical survey

The Ports and Yachting Directorate, Transport Malta, notifies mariners that a PEACE MED - Geophysical survey will be carried out along the route South-west outside Il-Bajja tal-Mixquqa (Golden Sands).

The survey will be carried out by the Research Vessel Odin Finder along the imaginary line as shown on the attached chart. The survey will start on Friday 31st January 2020.

Position	Latitude (N)	Longitude (E)
A	35° 55'.860	014° 20'.287
B	35° 55'.453	014° 18'.633
C	35° 45'.092	014° 03'.923
D	35° 41'.945	014° 00'.345
E	35° 40'.420	013° 53'.023
F	35° 40'.608	013° 51'.653

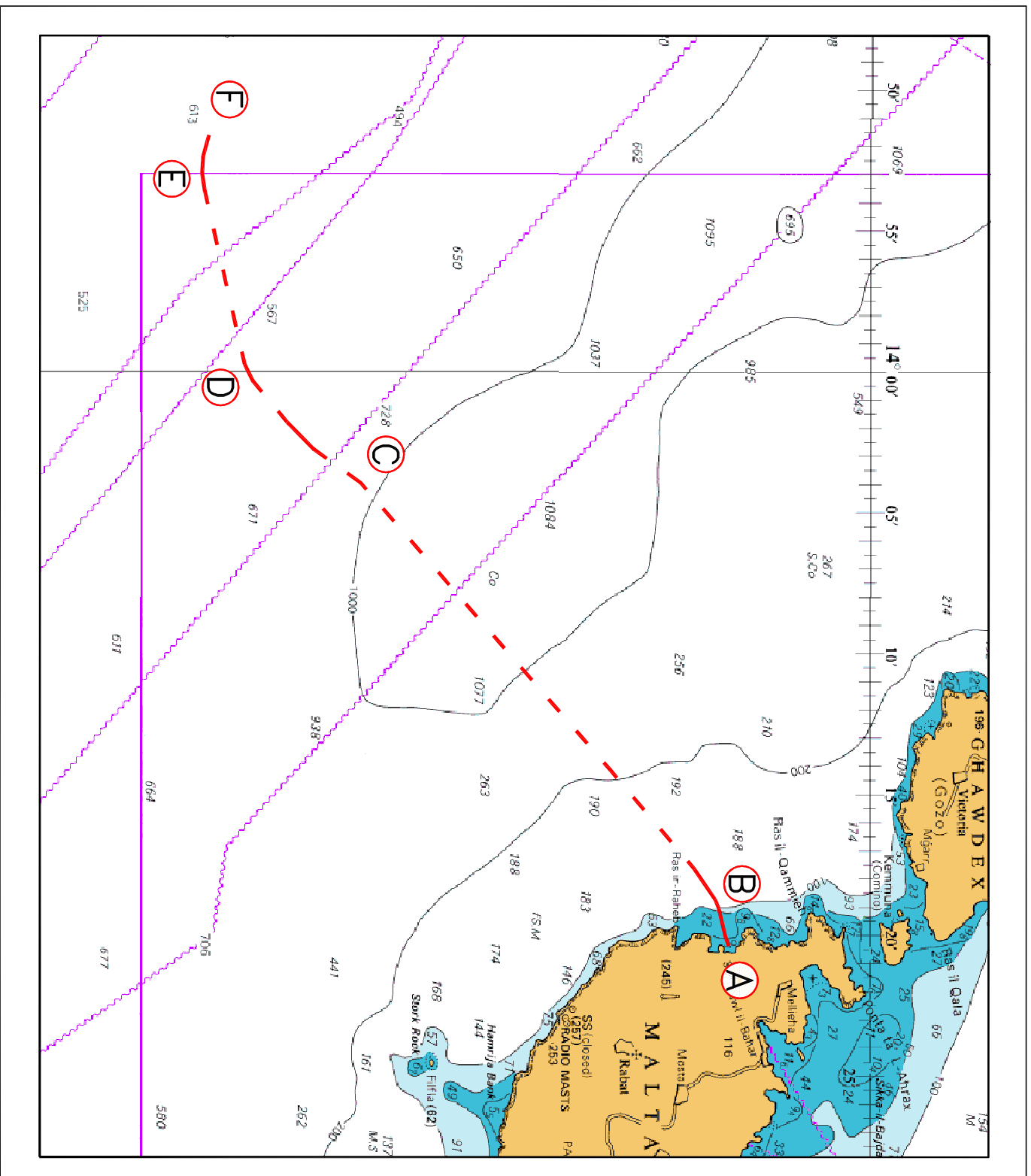
The survey will be carried out using a multibeam echo sounder, a sub-bottom profiler and a towed side scan sonar which will make the RV Odin Finder restricted in her ability to manoeuvre.

Mariners and operators of sea craft are advised to keep a sharp lookout and proceed with caution while navigating in the above area. They are to give the ODIN FINDER a wide berth of at least 1NM.

Moreover, they are requested to comply with instructions given by Malta VTS (Malta Coast Radio Station) on VHF channel 69 and Valletta VTS (Valletta Port Control) on VHF channel 12.

Chart affected: **BA 2537, 2538**

Positions referred to WGS 84 DATUM.



© British Crown Copyright 1970, 1983, 1986, 1988, 1999, 2000
All rights reserved.

The UK Hydrographic Office makes the accompanying data
Available to Malta Maritime Authority (Transport Malta)
Under the terms and conditions of agreement HO 1427/020930/01.

DISCLAIMER

Whilst the UK Hydrographic Office has endeavoured to ensure
That the material supplied is suitable for the purpose described,
It accepts no liability (to the maximum extent permitted by law)
For any damage or loss of any nature arising from its use.
The material supplied is used entirely at the Recipient's own risk.