



PORTS AND YACHTING DIRECTORATE

## LOCAL NOTICE TO MARINERS N° 036 of 2025

Our Ref: **TM/PYD/132/89**

3 April 2025



Transport Malta

Malta Transport Centre,  
Triq Pantar, Hal Lija, LJA 2021  
Malta

Tel: (356) 2122 2203  
Fax: (356) 2125 0365  
Email: [info.tm@transport.gov.mt](mailto:info.tm@transport.gov.mt)

[www.transport.gov.mt](http://www.transport.gov.mt)

### Filming at Ir-Ramla tac-Cirkewwa - ZF5

The Ports and Yachting Directorate, Transport Malta notifies all mariners, owners of vessels and divers, that filming activities will take place at Ir-Ramla tac-Cirkewwa.

The filming will be held between Friday 11<sup>th</sup> April 2025 at 1500 hours and Saturday 12<sup>th</sup> April 2025 at 0400 hours.

All mariners, owners of vessels and divers are advised that entry into the area formed by joining the points A to B, and the intermediate coastline (as shown on the attached chart) is prohibited on the above-mentioned date and times, unless there is an agreement with the organisers.

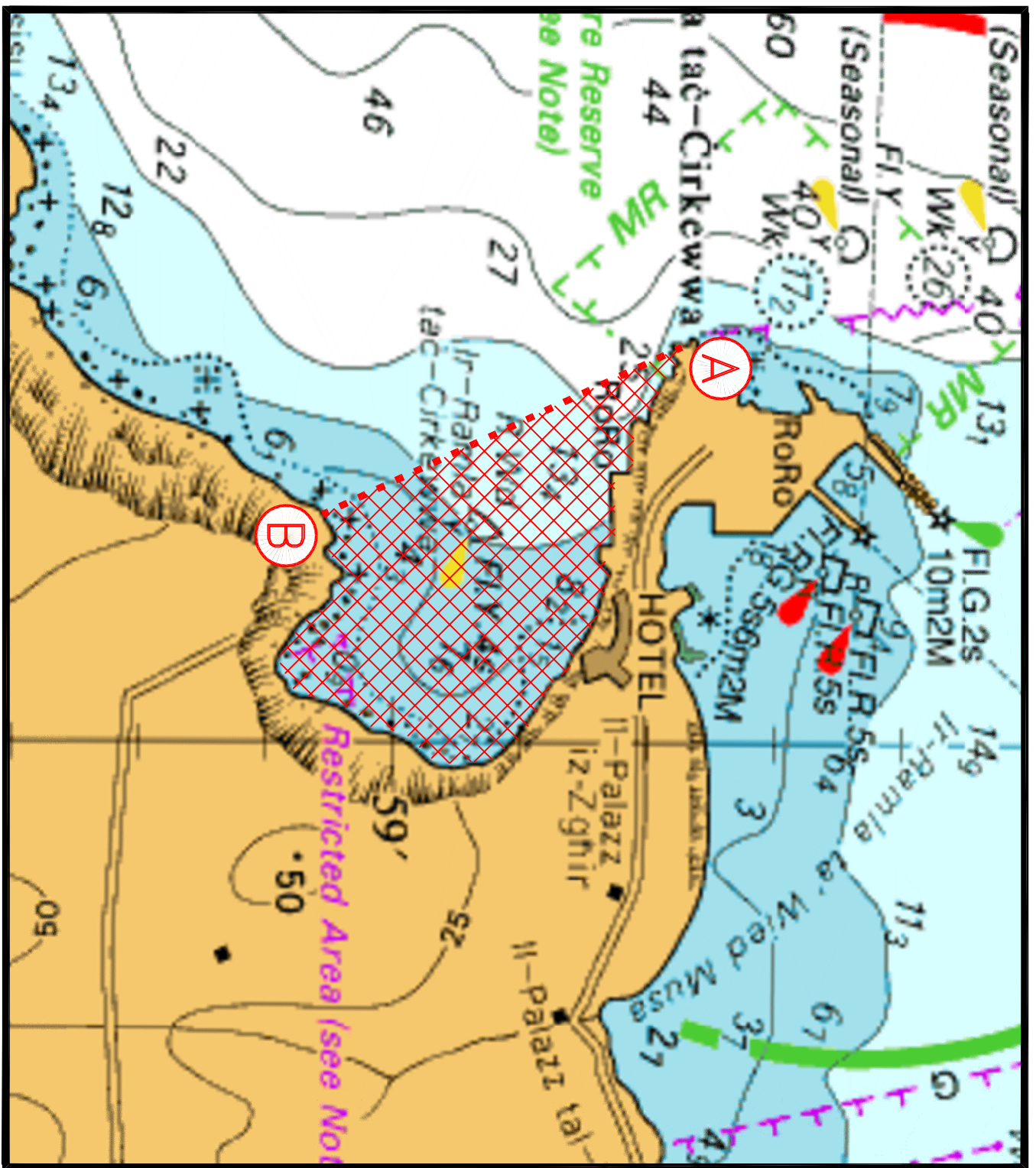
	LATITUDE (N)	LONGITUDE (E)
A	35° 59'.222	014° 19'.621
B	35° 58'.940	014° 19'.785

Mariners are advised to navigate with caution at slow speed and give a wide berth when in the vicinity, they are to keep out of the above-mentioned area.

No vessel is allowed to anchor within the said area.

Mariners and vessel operators are to comply with instructions and directions issued on VHF channel 12 and/or 16 by Valletta VTS and by any Enforcement Personnel on site.

Charts affected: **BA 2537**



© British Crown Copyright 1970, 1983, 1986, 1988, 1999, 2000  
 All rights reserved.

The UK Hydrographic Office makes the accompanying data  
 Available to Malta Maritime Authority (Transport Malta)  
 Under the terms and conditions of agreement HO 1427/020930/01.

**DISCLAIMER**

Whilst the UK Hydrographic Office has endeavoured to ensure  
 That the material supplied is suitable for the purpose described,  
 It accepts no liability (to the maximum extent permitted by law)  
 For any damage or loss of any nature arising from its use.  
 The material supplied is used entirely at the Recipient's own risk.