



PORTS AND YACHTING DIRECTORATE

NOTICE TO MARINERS No 08 of 2025

Our Ref: **TM/PYD/70/02**

04 March 2025



Transport Malta

Malta Transport Centre,
Triq Pantar, Hal Lija, LJA 2021
Malta

Tel: (356) 2122 2203
Fax: (356) 2125 0365
Email: info.tm@transport.gov.mt

www.transport.gov.mt

EMC Subsea Cable System - Offshore Cable route survey

The Ports and Yachting Directorate, Transport Malta, notifies mariners that several types of investigative surveys will be carried out for the EMC Subsea Cable System – Offshore Malta.

These investigative surveys will be carried out by the vessel “*MV Fugro Gauss*” and her ancillary equipment.

Weather permitting the surveys are planned to commence on Monday 10th March 2025 (Malta continental shelf boundary) and are expected to be completed by Tuesday 15th April 2025.

The route between the limit of West-End side of the Malta Continental Shelf - Point A and where ends on the East-End side of the Malta Continental Shelf - Point Q will be along the following coordinates:

Turning Point	Latitude (N)	Longitude (E)
A (Malta – Continental Shelf)	36° 22'.522	013° 04'.925
B	36° 19'.811	013° 06'.466
C	36° 17'.676	013° 11'.624
D	36° 05'.763	013° 32'.664
E	36° 02'.127	013° 31'.963
F	35° 59'.541	013° 35'.508
G	35° 58'.272	013° 39'.041
H	35° 47'.216	013° 53'.295
I	35° 39'.943	014° 00'.097
J	35° 32'.506	014° 13'.162
K	35° 28'.093	014° 25'.178
L	35° 27'.337	014° 28'.000
M	35° 28'.275	014° 49'.791



Transport Malta

N	35° 27'.820	015° 35'.718
O	35° 31'.353	016° 03'.132
P	35° 33'.525	016° 15'.938
Q (Malta – Continental Shelf)	35° 31'.452	016° 29'.377

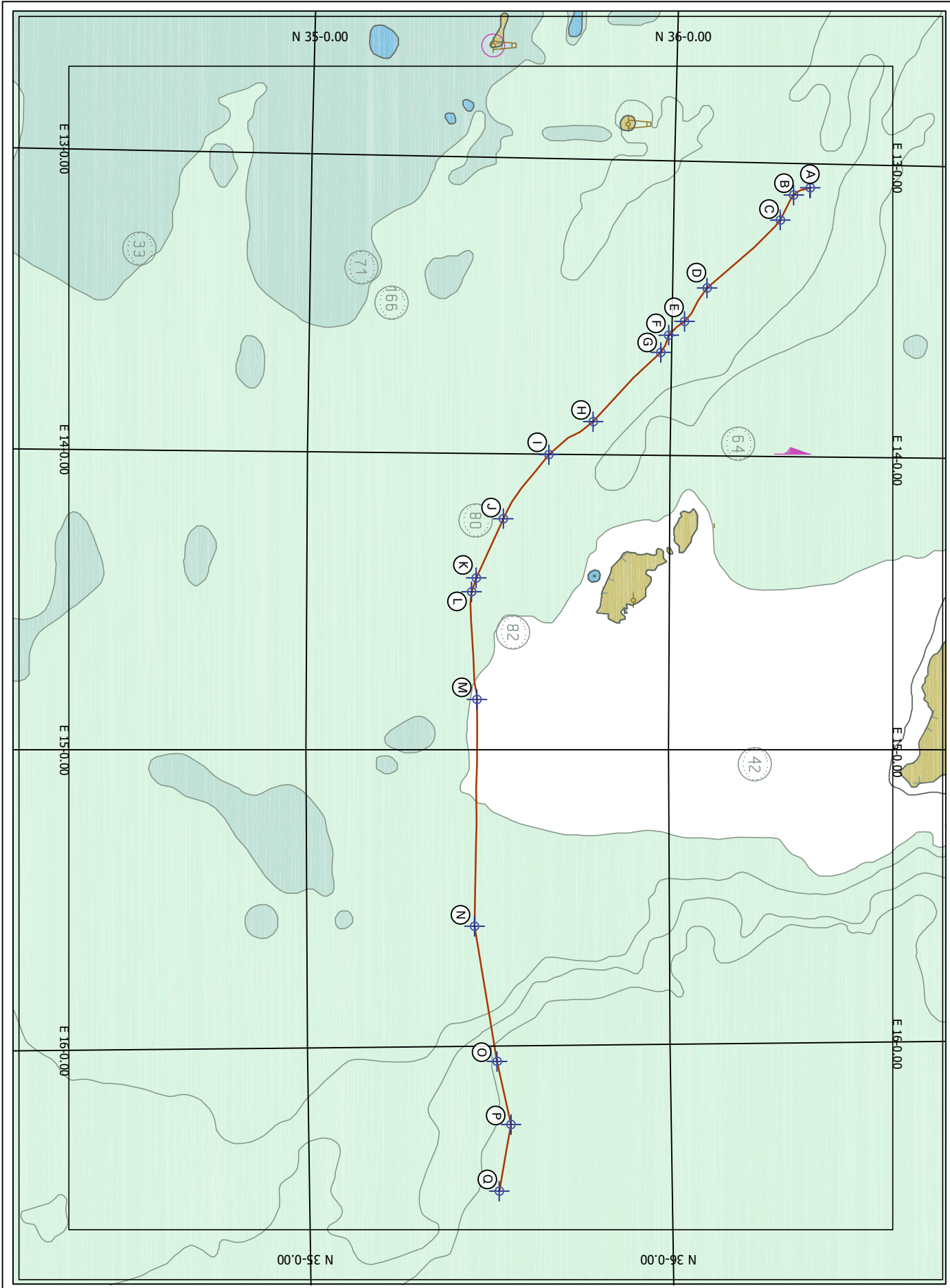
Since the vessel will be towing different types of equipment and, may at times be stationery, she will be restricted in her ability to manoeuvre.

Appropriate signals in accordance with the Regulations for the Prevention of Collisions at sea (COLREGS) and the International Code of Signals, will be exhibited accordingly.

Mariners are instructed to navigate with caution and to maintain a safe distance of 0.75 Nautical Miles from the vessel “*MV Fugro Gauss*” when it is detected or sighted.

All vessels are to comply with any instructions given on VHF 16.

Charts Affected: **BA 2124**



© Transport Malta all rights reserved

DISCLAIMER

Whilst the Ports and Yachting Directorate, Transport Malta has endeavoured to ensure that the material supplied is suitable for use, it does not accept any liability for any loss or damage (including loss of profit) for any damage or loss of any nature arising from its use. The material supplied is used entirely at the recipient's own risk.