



PORTS AND YACHTING DIRECTORATE

Transport Malta

LOCAL NOTICE TO MARINERS No 028 OF 2019

Our Ref: **TM/PYD/0001/19**

Malta Transport Centre
Marsa, MRS 1917
Malta

Tel: (356) 2122 2203
Fax: (356) 2125 0365
Email: info.tm@transport.gov.mt

03 April 2019

www.transport.gov.mt

Infrastructure Malta - Ferry Landing in Sliema

The Ports and Yachting Directorate, Transport Malta notifies Mariners that Infrastructure Malta will start construction works at Id-Dahla ta' tas-Sliema in Il-Port ta' Marsaxxett on Monday 8th April 2019.

These works will include the use of vessels/barges/workboats and divers. Temporary shutter works over water and below sea level, as well as a silt curtain will be installed. In view of the above, a 30m safety zone around the working area is to be maintained.

The work will start on Monday 8th April 2019 and is expected to be completed by April 2020.

Works will be carried out in 2 phases

Phase 1 will start on Monday 8th April 2019, the silt curtain will be deployed along the lines joining the points A, B, C and D, shown in blue on the attached chart, and will remain until the end of the project.

Phase 2 will start on Monday 4th November 2019, another silt curtain will be deployed along the lines joining the points E, F and G, shown in green on the attached chart, and will then remain in position until the end of the project.

While the silt curtains are deployed they will be lit up along the mentioned lines.

Masters and operators of vessels are informed that no vessel will be allowed to berth alongside that section of the quay while works are in progress.

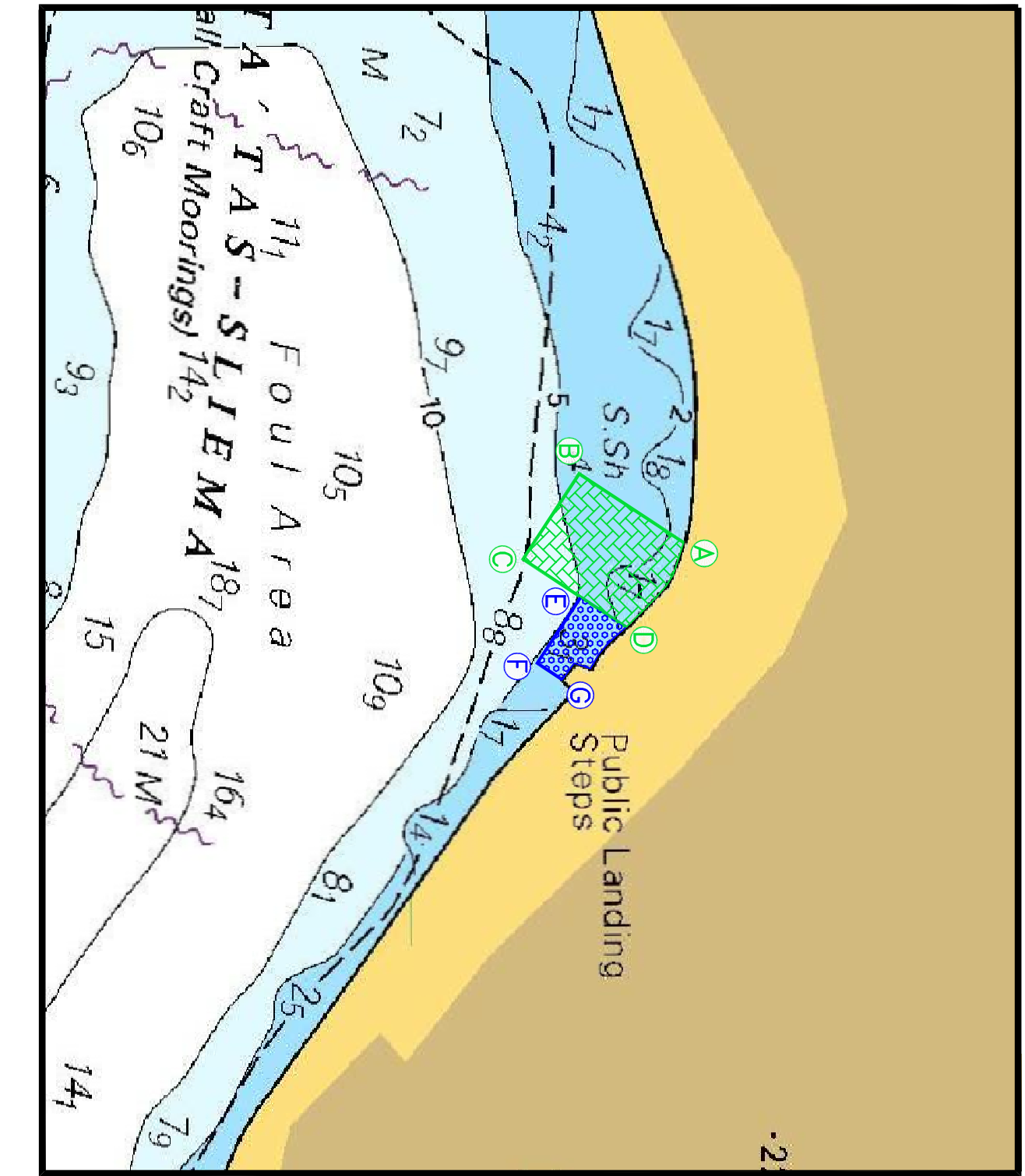
They are to seek information about operating restrictions from Transport Malta and coordinate with the contractors on site. Further details about these works can be obtained from Infrastructure Malta on info.im@infrastructuremalta.com.



Transport Malta

They are also advised to keep a sharp lookout, navigate with caution and very slow speed and give the indicated areas a wide berth. They are to comply with any instructions given by Valletta Port Control (Valletta VTS) on VHF Channel 12 and Enforcement Personnel on site.

Charts affected: **BA 177**



-2-

©British Crown Copyright 1970, 1983, 1986, 1988, 1989, 1999, 2000. All rights reserved

The UK Hydrographic Office makes the accompanying data available to Transport Malta under the terms and conditions of agreement HD 1427/020930/01.

DISCLAIMER

While the UK Hydrographic Office has endeavoured to ensure that the material supplied is suitable for the purposes described, it accepts no liability (to the maximum extent permitted by law) for any damage or loss of any nature arising from its use. The material supplied is used entirely at the Recipient's own risk.