



PORTS AND YACHTING DIRECTORATE

Transport Malta

## LOCAL NOTICE TO MARINERS No 009 of 2020

Our Ref: **TM/PYD/63/95**

Malta Transport Centre  
Marsa, MRS 1917  
Malta

Tel: (356) 2122 2203  
Fax: (356) 2125 0365  
Email: [info.tm@transport.gov.mt](mailto:info.tm@transport.gov.mt)

[www.transport.gov.mt](http://www.transport.gov.mt)

10 January 2020

### Geophysical survey off Ponta tat-Tawaliija, Delimara

The Ports and Yachting Directorate, Transport Malta, notifies mariners and owners of vessels that a Geophysical survey will be held off Panta tat-Tawwalija, Dellimara.

Divers will be deployed during the survey which will be carried out within the area A, B, C and D, as shown hatched on attached chart.

	LATITUDE (N)	LONGITUDE (E)
A	35° 49'.429	014° 33'.722
B	35° 49'.241	014° 34'.066
C	35° 49'.379	014° 34'.174
D	35° 49'.570	014° 33'.811

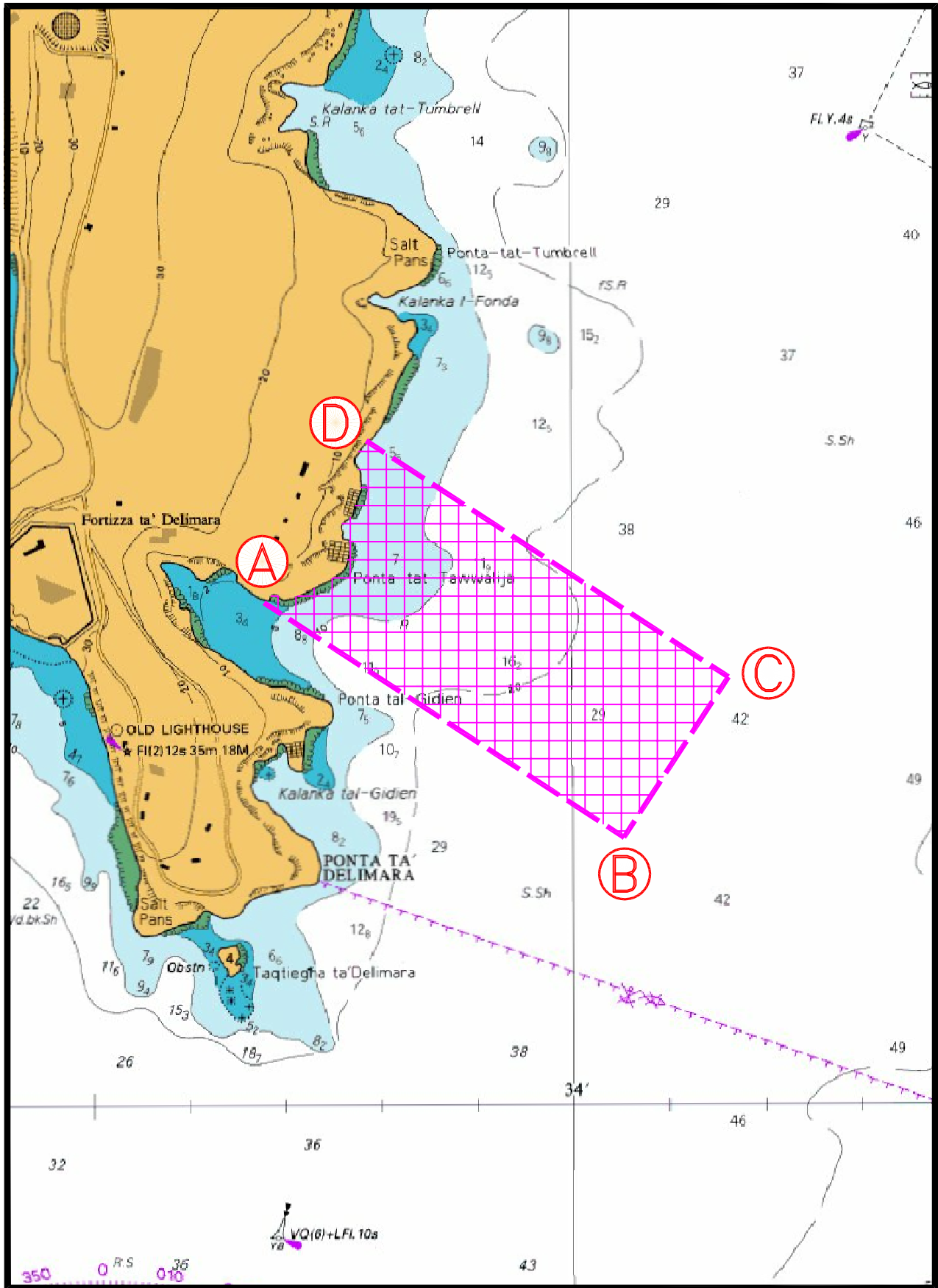
Weather permitting the survey will commence on Tuesday 14<sup>th</sup> January 2020 and is expected to be completed by Sunday 26<sup>th</sup> January 2020. The survey will start at 0730 hours and stop by 1700 hours every day.

During the survey the vessel SIMO will assist the divers and will be displaying the International Code of Signals Flag 'A' and 'D' as it will also have restricted manoeuvrability.

Mariners and operators of vessels are advised to keep a sharp lookout and give the above mentioned vessel a wide berth as it will have restricted manoeuvrability.

Instructions given by Marsaxlokk Port Control (Marsaxlokk VTS) on VHF Channel 14 are to be complied with.

Chart affected: **BA 36, 2538**



© British Crown Copyright 1970, 1983, 1986, 1988, 1999, 2000  
All rights reserved.

The UK Hydrographic Office makes the accompanying data  
Available to Malta Maritime Authority (Transport Malta)  
Under the terms and conditions of agreement HO 1427/020930/01.

**DISCLAIMER**

Whilst the UK Hydrographic Office has endeavoured to ensure  
That the material supplied is suitable for the purpose described,  
It accepts no liability (to the maximum extent permitted by law)  
For any damage or loss of any nature arising from its use.  
The material supplied is used entirely at the Recipient's own risk.