



PORTS AND YACHTING DIRECTORATE

LOCAL NOTICE TO MARINERS N° 004 of 2025

Our Ref: **TM/PYD/70/02**

14 January 2025



Transport Malta

Malta Transport Centre,
Triq Pantar, Hal Lija, LJA 2021
Malta

Tel: (356) 2122 2203
Fax: (356) 2125 0365
Email: info.tm@transport.gov.mt

www.transport.gov.mt

ROV survey of artificial reefs off St Julian's

The Ports and Yachting Directorate, Transport Malta, notifies mariners that a survey will be carried out with the use of a Remotely Operated Vehicle (ROV). This survey will be carried out on the 4 artificial reefs located off St. Julian's Bay in the following positions:

	Latitude (N)	Longitude (E)
AR	35° 55'.370	14° 30'.233
CR	35° 55'.303	14° 30'.341
rAR	35° 55'.891	14° 30'.120
rCR	35° 55'.796	14° 30'.184

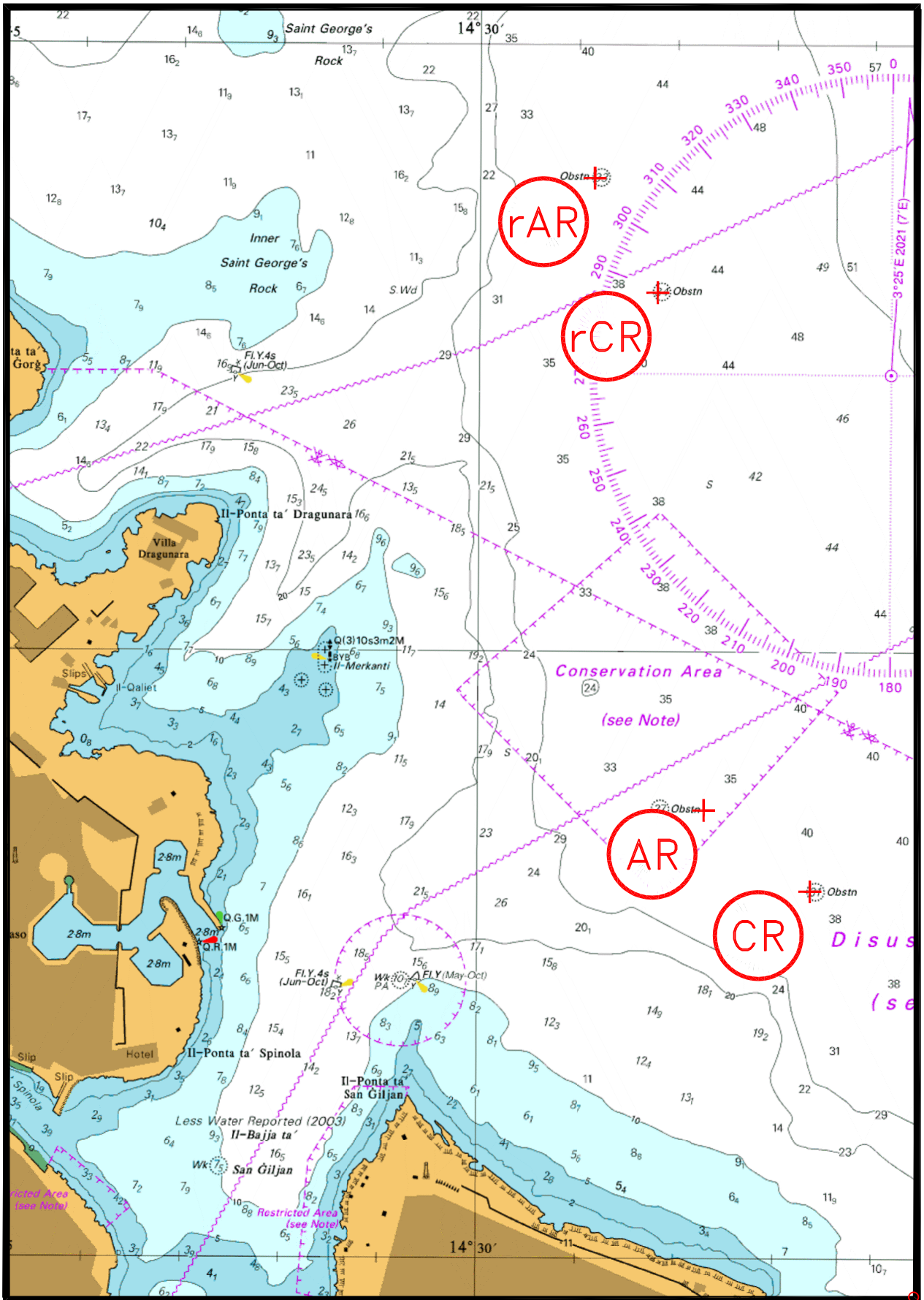
The survey is planned to be carried out on any days between Monday 27th January 2025 and Thursday 6th February 2025.

The ROV will be operated from either the support vessel '*MV Atlantis II*' or '*MV Sea Star*'.

Mariners are instructed to navigate with caution when in the vicinity of the above-mentioned areas, they are to maintain a safe distance of 200m from the ROV and support vessel.

All mariners are to cooperate with the contractor and to comply with any instructions given on VHF Channel 12 and/or 16, by Valletta VTS.

Charts Affected: **BA 2537, 2538**



© British Crown Copyright 1970, 1983, 1986, 1988, 1999, 2000
All rights reserved.

The UK Hydrographic Office makes the accompanying data
Available to Malta Maritime Authority (Transport Malta)
Under the terms and conditions of agreement HO 1427/020930/01.

DISCLAIMER

Whilst the UK Hydrographic Office has endeavoured to ensure
That the material supplied is suitable for the purpose described,
It accepts no liability (to the maximum extent permitted by law)
For any damage or loss of any nature arising from its use.
The material supplied is used entirely at the Recipient's own risk.