



PORTS AND YACHTING DIRECTORATE

## LOCAL NOTICE TO MARINERS N° 002 of 2025

Our Ref: **TM/PYD/220/94 Vol II**

7 January 2025



**Transport Malta**

Malta Transport Centre,  
Triq Pantar, Hal Lija, LJA 2021  
Malta

Tel: (356) 2122 2203  
Fax: (356) 2125 0365  
Email: [info.tm@transport.gov.mt](mailto:info.tm@transport.gov.mt)

[www.transport.gov.mt](http://www.transport.gov.mt)

### **Sailing regatta off Sliema and St. Julian's seafront**

The Ports and Yachting Directorate, Transport Malta, hereby notifies mariners that the Royal Malta Yacht Club will be organising a sailing regatta which will be held off Sliema and St. Julian's seafront.

The sailing regatta will be held off Sliema / St. Julian's within race area 1, as shown on the attached chart A, on the following days and times:

Friday 10<sup>th</sup> January 2025, between 1100 hours and 1600 hours,  
Saturday 11<sup>th</sup> January 2025, between 1000 hours and 1600 hours, and on  
Sunday 12<sup>th</sup> January 2025, between 1000 hours and 1600 hours.

Orange inflatable marker buoys to indicate the racecourse within the above-mentioned area will be laid at the start time indicated above and will be removed by 1700 hours, on each day of the races.

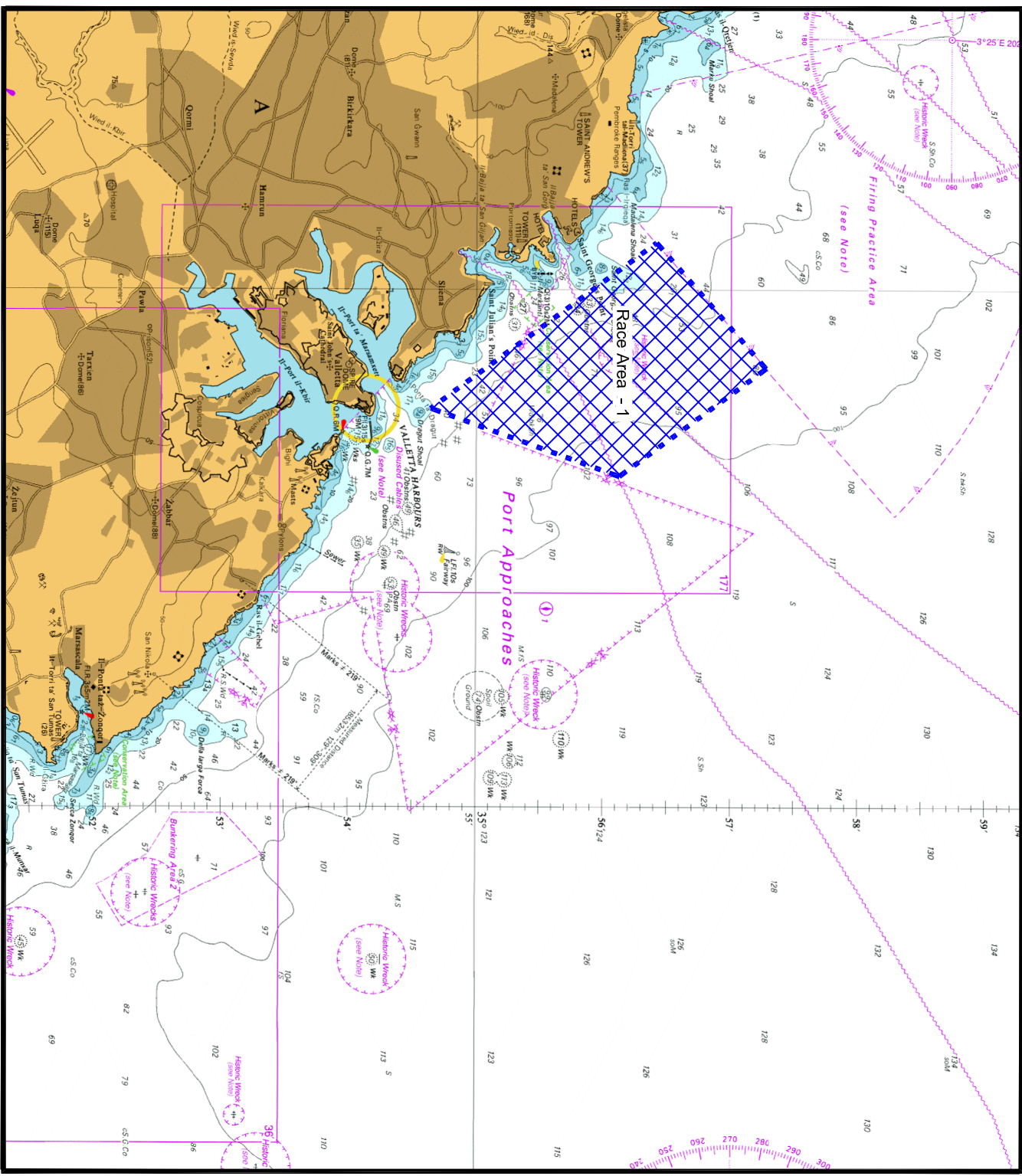
All vessels that are not involved in the activity are to keep well clear from the competing sailing vessels and are to follow any instructions given by the race officials, the support vessels and any enforcement officers in the area.

If for some reason the event cannot be held within race area 1 as stated above, they will try to hold the event in Marsamxett Harbour, within race area 2, as shown on the attached chart B, on the same days and times.

Mariners navigating in the vicinity are to note the above, keep watch on VHF Channel 12 and/or 16 and are to give the areas indicated a wide berth. They are further instructed to fully comply with Rule 18 (COLREGS 1972) and to '*keep out of the way*' of the sailing vessels participating in the Regatta.

Any instructions issued on VHF channel 12 and/or 16 by Valletta VTS are to be complied with.

Chart affected: **BA 177, 2538, 2537.**



# Chart A

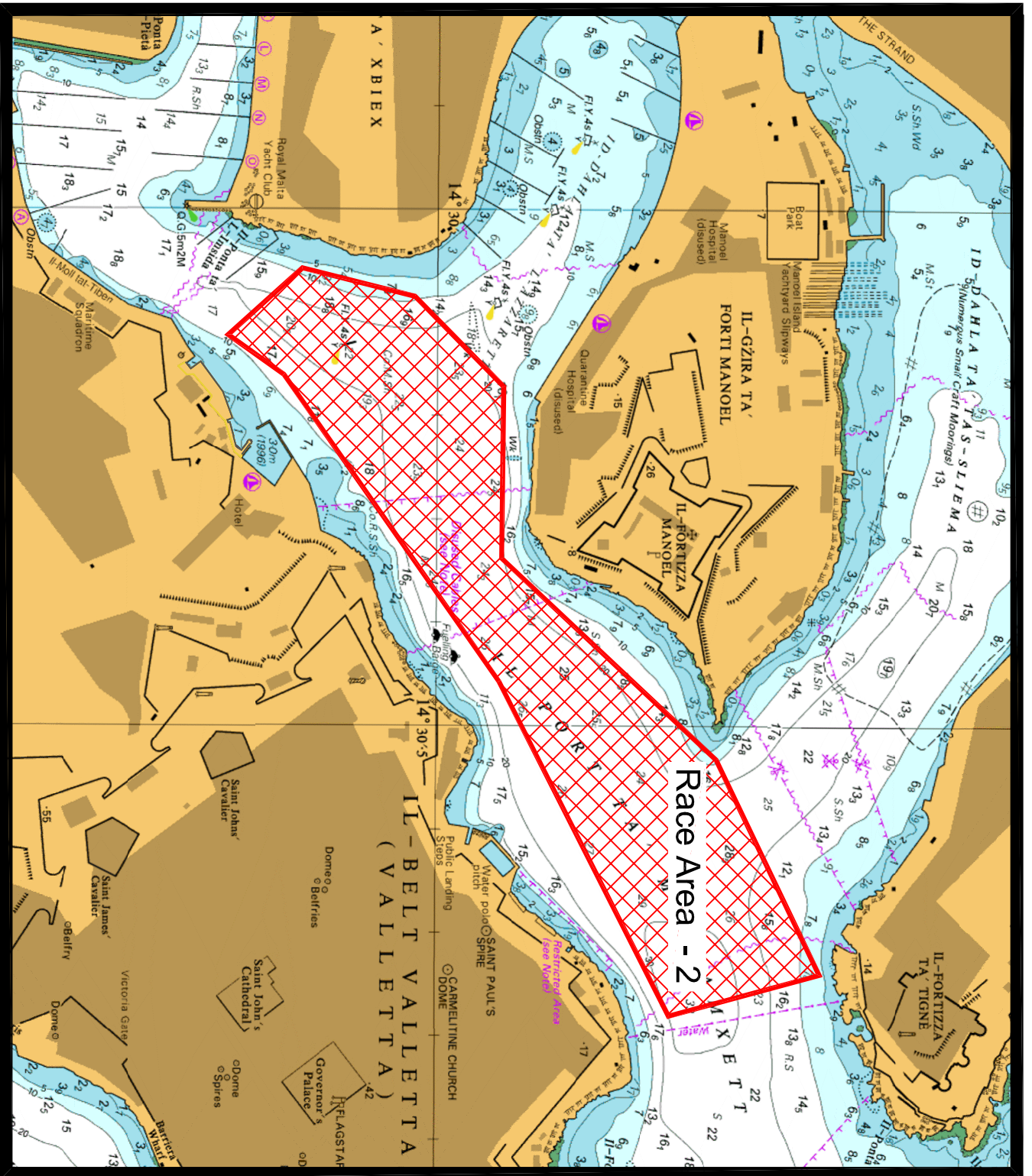
© British Crown Copyright 1970, 1983, 1986, 1988, 1999, 2000  
All rights reserved.

The UK Hydrographic Office makes the accompanying data Available to Malta Maritime Authority (Transport Malta) Under the terms and conditions of agreement HO 1427/020930/01.

**DISCLAIMER**

Whilst the UK Hydrographic Office has endeavoured to ensure That the material supplied is suitable for the purpose described, It accepts no liability (to the maximum extent permitted by law) For any damage or loss of any nature arising from its use.

The material supplied is used entirely at the Recipient's own risk.



© British Crown Copyright 1970, 1983, 1986, 1988, 1999, 2000  
 All rights reserved.

The UK Hydrographic Office makes the accompanying data Available to Malta Maritime Authority (Transport Malta) Under the terms and conditions of agreement HO 1427/020930/01.

**DISCLAIMER**

Whilst the UK Hydrographic Office has endeavoured to ensure That the material supplied is suitable for the purpose described, it accepts no liability (to the maximum extent permitted by law) For any damage or loss of any nature arising from its use. The material supplied is used entirely at the Recipient's own risk.

**Chart B**