



PORTS AND YACHTING DIRECTORATE

LOCAL NOTICE TO MARINERS N° 157 of 2024

Our Ref: **TM/PYD/220/94 Vol II**

11 November 2024



Transport Malta

Malta Transport Centre,
Triq Pantar, Hal Lija, LJA 2021
Malta

Tel: (356) 2122 2203
Fax: (356) 2125 0365
Email: info.tm@transport.gov.mt

www.transport.gov.mt

Beneteau Cup - Sailing regattas between Marsamxett Harbour and Blue Lagoon, Comino

The Ports and Yachting Directorate, Transport Malta, notifies mariners that a sailing regatta between Marsamxett Harbour and Blue Lagoon, will be held on Saturday 16th November 2024.

The first leg of the regatta will start at 0900 hours from outside Marsamxett Harbour point A, they will sail towards point B and finish approximately at 1230 hours outside Blue Lagoon point C, as shown on the attached chart.

All the vessels will then anchor at Blue Lagoon, Comino.

The second leg of the regatta will start at 1500 hours from outside Blue Lagoon point C, they will sail towards point B and finish approximately at 1730 hours outside Marsamxett Harbour point A, as shown on the attached chart.

POSITION	LATITUDE (N)	LONGITUDE (E)
A	35° 54'.958	014° 31'.787
C	36° 01'.127	014° 19'.128

If due to unfavourable weather conditions, the regatta cannot be held as planned, it will be held on the same day, the first leg of the regatta will start at 0900 hours from outside Marsamxett Harbour point A, they will sail towards points D, E, F, G respectively and finish approximately at 1230 hours outside Fomm ir-Rih point H, as shown on the attached chart.

All the vessels will then anchor at Fomm ir-Rih.

The second leg of the regatta will start at 1500 hours from outside Fomm ir-Rih point H, they will sail towards points G, F, E, D respectively and finish approximately at 1730 hours outside Marsamxett Harbour point A, as shown on the attached chart.



Transport Malta

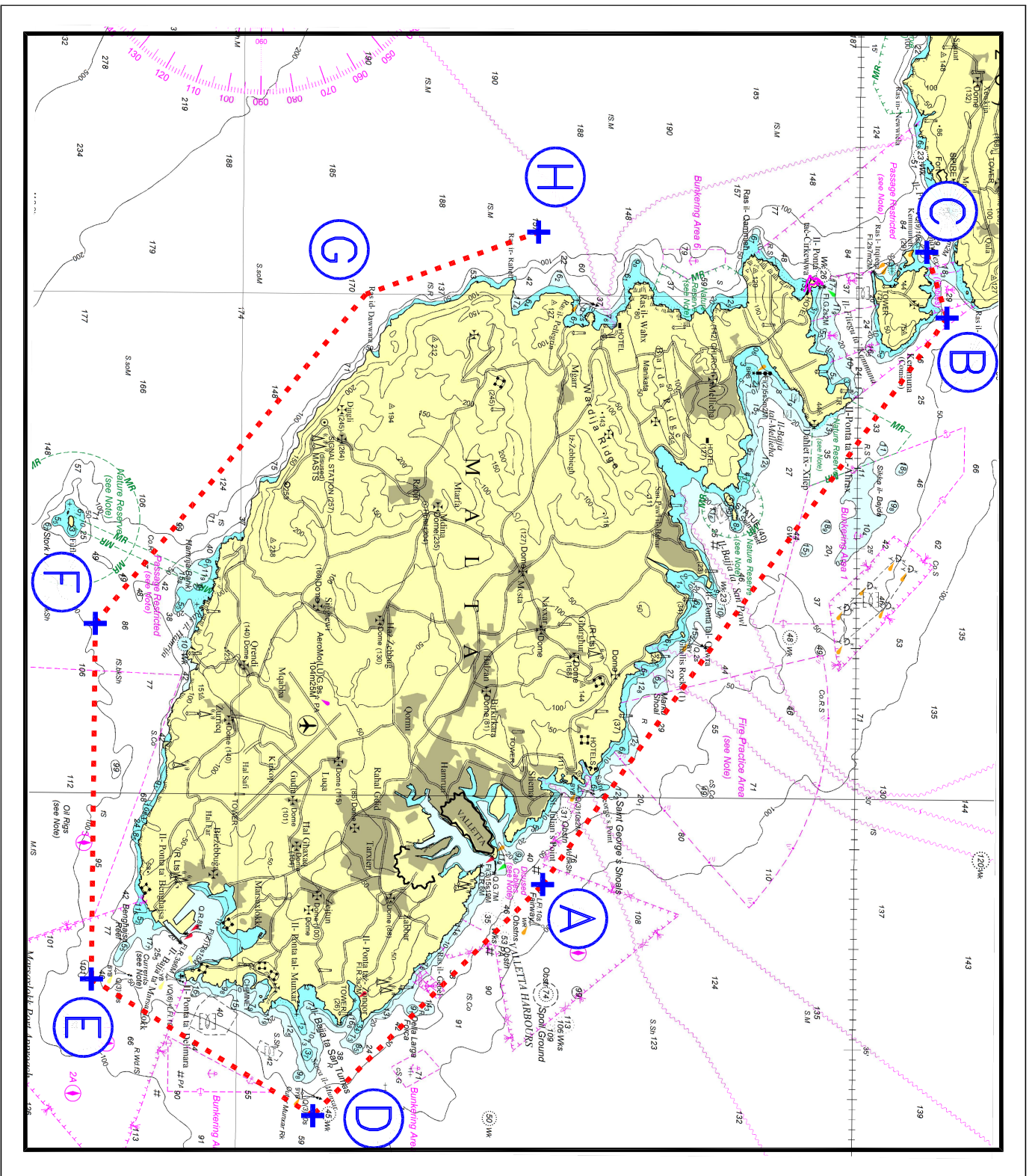
POSITION	LATITUDE (N)	LONGITUDE (E)
H	35° 54'.827	014° 18'.778

Mariners are to note the above and are to give the competing vessels a wide berth. They are further instructed to fully comply with Rule 18 (COLREGS 1972) and to '*keep out of the way*' of the sailing vessels participating in the Regatta.

Mariners navigating in the vicinity of the indicated route on the mentioned date and times are to keep watch on VHF Channel **12** and/or **16** and are to cooperate with the organisers and/or enforcement personnel in the area.

Any instructions issued on VHF channel **12** and/or **16** by Valletta VTS are to be complied with.

Chart affected: **BA 194, 177, 211, 2538, 2537.**



© British Crown Copyright 1970, 1983, 1986, 1988, 1999, 2000
 All rights reserved.

The UK Hydrographic Office makes the accompanying data
 Available to Malta Maritime Authority (Transport Malta)
 Under the terms and conditions of agreement HO 1427/020930/01.

DISCLAIMER

Whilst the UK Hydrographic Office has endeavoured to ensure
 that the material supplied is suitable for the purpose described,
 it accepts no liability (to the maximum extent permitted by law)
 for any damage or loss of any nature arising from its use.
 The material supplied is used entirely at the Recipient's own risk.