



PORTS AND YACHTING DIRECTORATE

Transport Malta

LOCAL NOTICE TO MARINERS N° 156 of 2024

Our Ref: **TM/PYD/111/92**

08 November 2024

Malta Transport Centre
Marsa, MRS 1917
Malta

Tel: (356) 2122 2203
Fax: (356) 2125 0365
Email: info.tm@transport.gov.mt

www.transport.gov.mt

Re-establishing of swimmer zone at Blue Lagoon - Comino

The Ports and Yachting Directorate, Transport Malta, hereby notifies all mariners, owners of vessels and bathers, that the swimmer zone at Blue Lagoon in Comino will be re-established with immediate effect until Monday 18th November 2024.

1a) Blue Lagoon – Comino Swimmers' Zone (see Figure 1 attached)

No vessels or objects which may endanger the safety of bathers, including any type of fishing gear/implements, shall be used within a swimmers' zone. The swimmers' zone is being reserved exclusively for bathers and is delineated by the following coordinates: -

Position	Latitude (N)	Longitude (E)	
1A	36° 00'.893	014° 19'.281	(Shore)
1B	36° 00'.898	014° 19'.289	
1C	36° 00'.825	014° 19'.351	
1D	36° 00'.846	014° 19'.440	
1E	36° 00'.851	014° 19'.452	(Shore)
1F	36° 00'.751	014° 19'.471	(Shore)
1G	36° 00'.740	014° 19'.390	(Shore)

1b) Mooring areas for Commercial vessels

Two mooring areas are being assigned for Commercial vessels. The boundaries of these mooring areas are delineated by the following coordinates: -

Position	Latitude (N)	Longitude (E)	
4	36° 01'.004	014° 19'.397	(Shore)
5	36° 00'.965	014° 19'.332	(Buoy)
6	36° 00'.927	014° 19'.364	
7	36° 00'.974	014° 19'.425	(Shore)



Transport Malta

8	36° 00'.920	014° 19'.458	(Shore)
9	36° 00'.941	014° 19'.433	
10	36° 00'.904	014° 19'.383	
11	36° 00'.859	014° 19'.421	
12	36° 00'.866	014° 19'.439	(Shore)

1c) Fairway

A fairway has been established as indicated on the chart attached as Figure 1 and it is delineated by the following positions. Special Mark buoys fitted with a yellow light flashing every 5 seconds will be placed at points **1, 2, 3** and **5**.

Position	Latitude (N)	Longitude (E)	
1	36° 00'.852	014° 19'.401	(Buoy)
2	36° 00'.913	014° 19'.346	(Buoy)
3	36° 00'.952	014° 19'.310	(Buoy)
5	36° 00'.965	014° 19'.332	(Buoy)
11	36° 00'.859	014° 19'.421	

A minimum safety distance of 5 metres from the swimmers' zone is to be maintained.

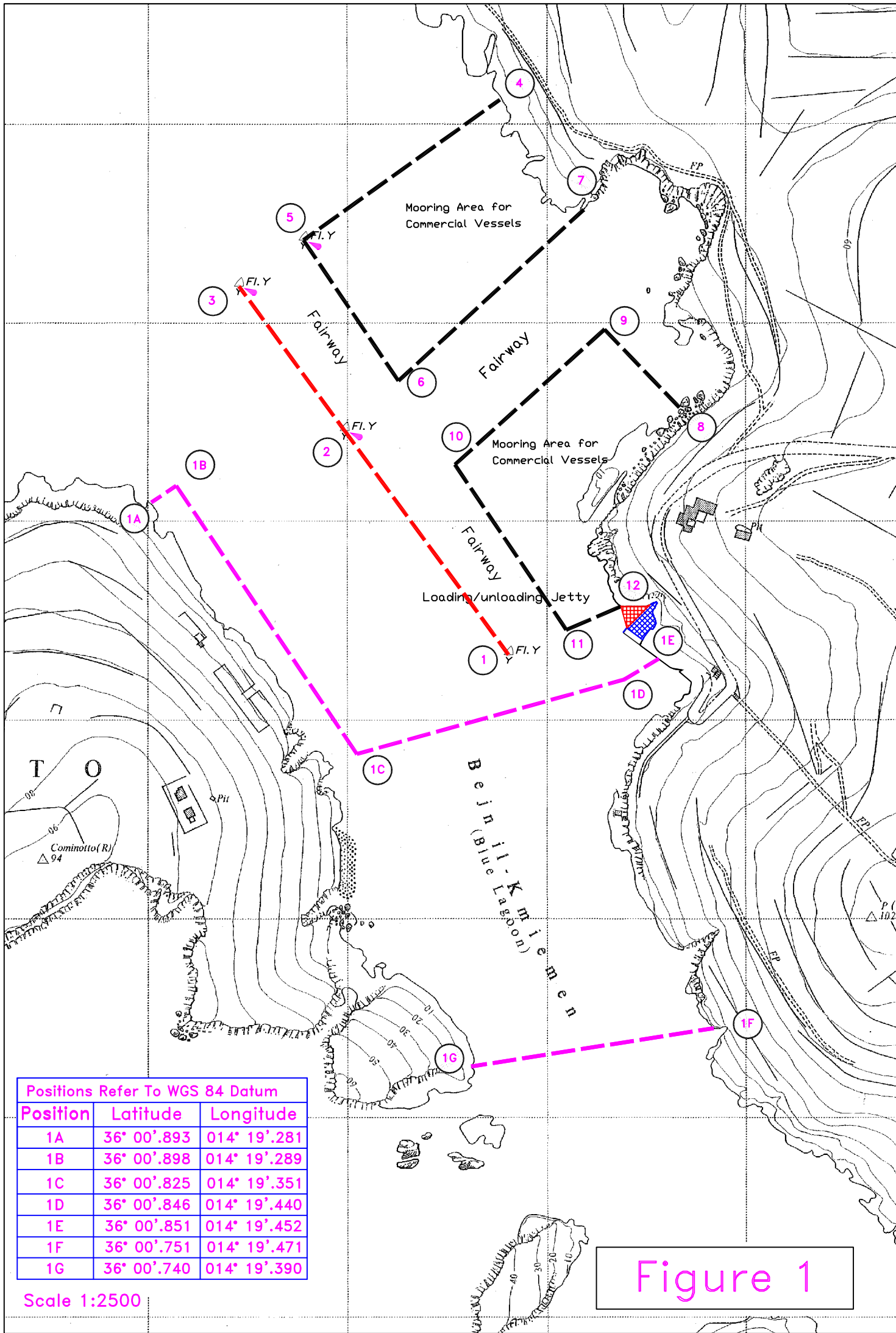
Nylon ropes supported by floats will delineate the swimmers' zone and may remain in place, two weeks after the stipulated date. Mariners are to keep a safe distance from the vessels that will be laying and/or removing the ropes.

For the benefit and safety of all bathers and mariners, Transport Malta urges all visitors and commercial vessels to adhere to these arrangements. Enforcement Officers will be randomly patrolling the area. Any offender, on conviction, shall be liable to the fines (multa) as laid down in the second column to the Third Schedule of the Small Ships Regulations, as amended.

Mariners are advised to keep a good lookout and navigate with caution and at slow speed when entering the Blue Lagoon. They are also reminded that it is prohibited to secure/moor any vessel to any of the marker buoys, swimmers' zone delineation markers and related gear belonging to Transport Malta.

All positions are referred to WGS 84 DATUM.

Chart Affected: **BA 211**



Positions Refer To WGS 84 Datum

Position	Latitude	Longitude
1A	36° 00'.893	014° 19'.281
1B	36° 00'.898	014° 19'.289
1C	36° 00'.825	014° 19'.351
1D	36° 00'.846	014° 19'.440
1E	36° 00'.851	014° 19'.452
1F	36° 00'.751	014° 19'.471
1G	36° 00'.740	014° 19'.390

Scale 1:2500

Figure 1